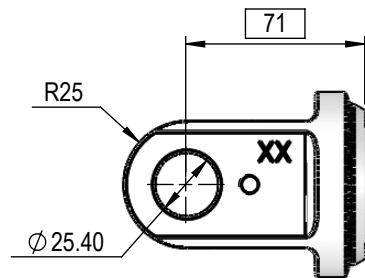
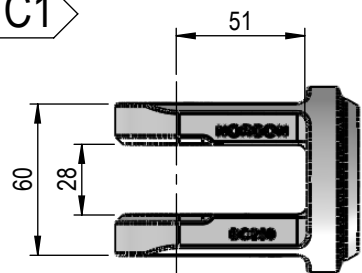


# NI SERIES 2.5" BORE 1.25" OR 1.5" ROD CYLINDER

## FEMALE CLEVIS

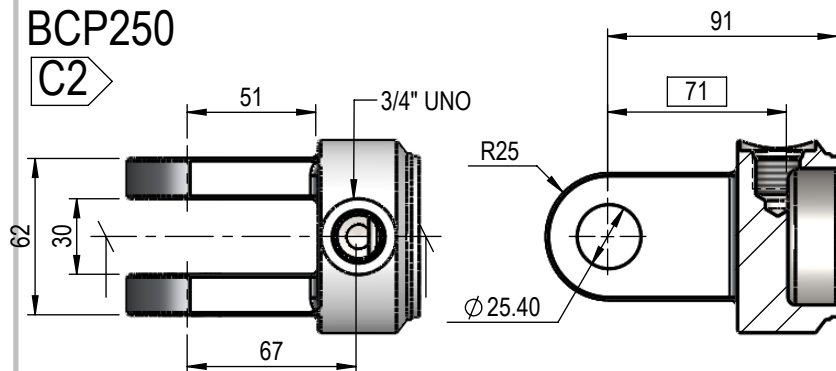
BC250

C1



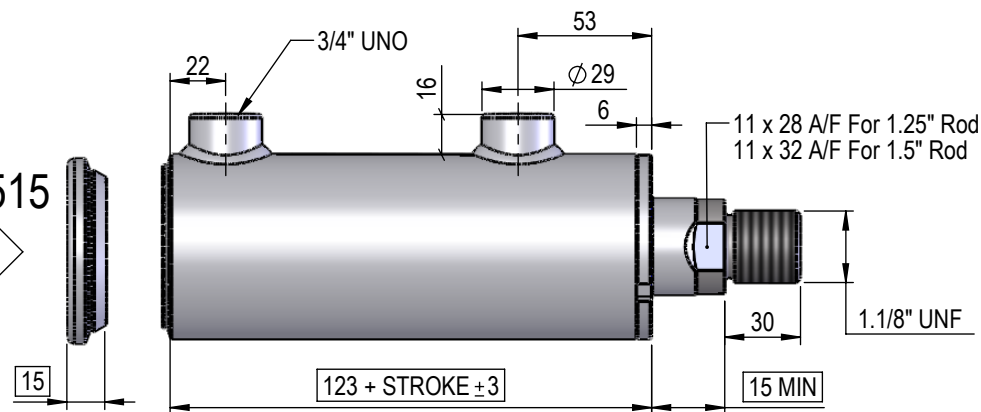
BCP250

C2



EP2515

P1

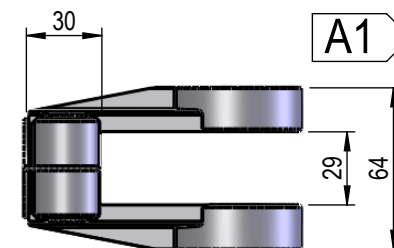


*DIMENSIONS IN BOXES TO BE  
USED FOR BUILD LENGTH*

## FEMALE CLEVIS

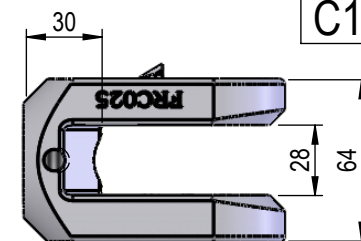
AC001

A1



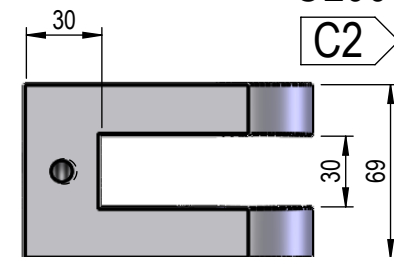
FRC025

C1

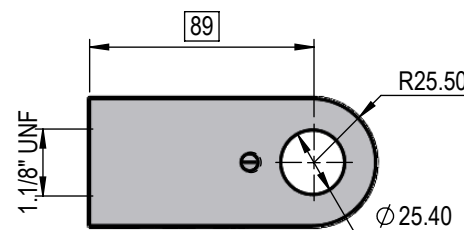
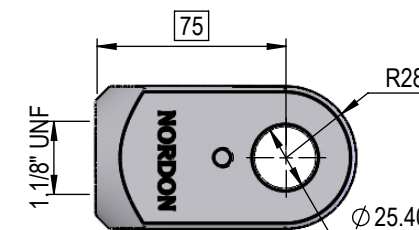
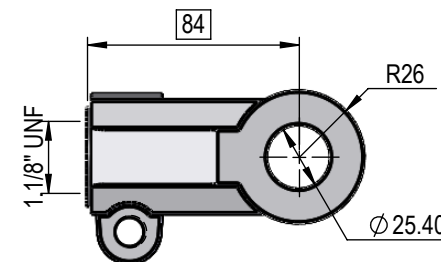
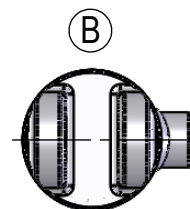
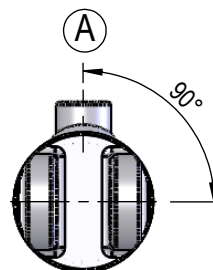


CL001

C2



## PORT POSITION



# NI SERIES 2.5" BORE 1.25" OR 1.5" ROD CYLINDER

DIMENSIONS IN BOXES TO BE  
USED FOR BUILD LENGTH

## PIN-EYE

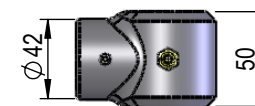
EC10I50M11I

E1



EC12I50M11I

E2



EC12I60M11I

E3



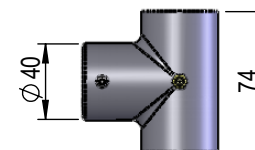
EC10I60M11I

E4



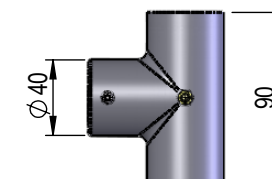
EC10I51M74M

E5



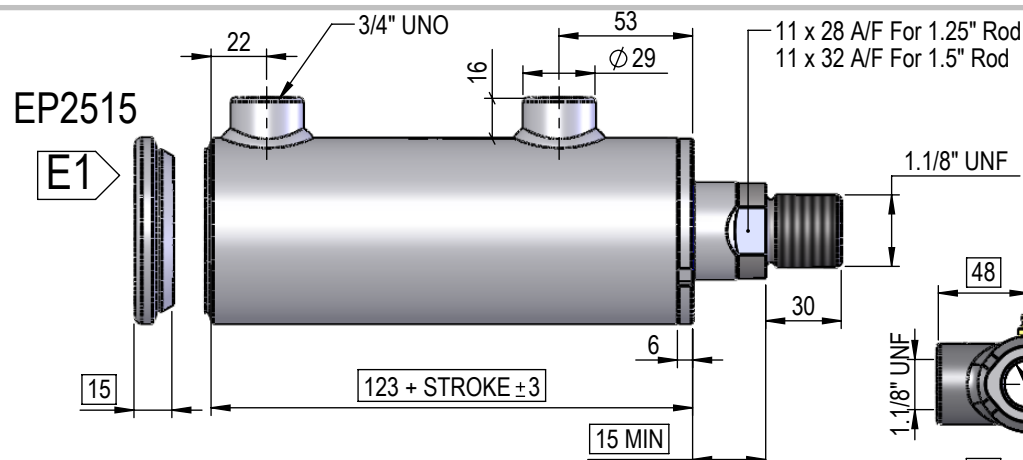
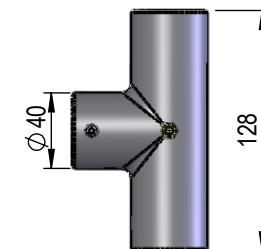
EC10I51M90M

E6

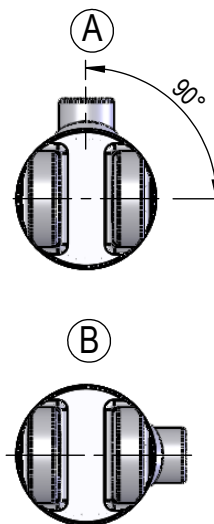


EC10I51M128M

E7



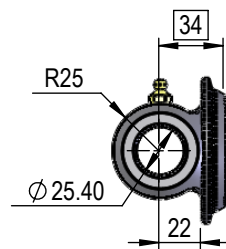
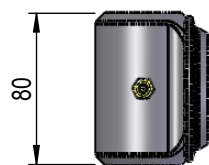
## PORT POSITION



## PIN-EYE

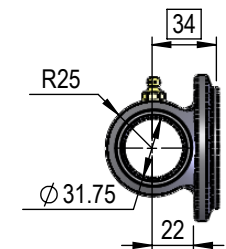
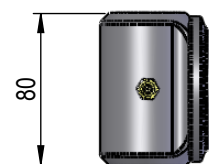
PBC250-10I80M

E1



PBC250-12I80M

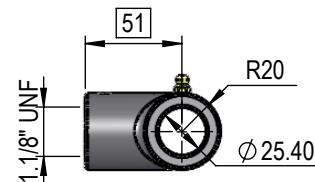
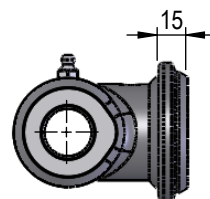
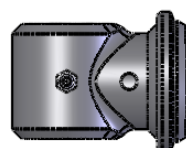
E2



## MALE LUG

Rod Pin Eye (E1-E7) + EP2515

M1-M7



# NI SERIES

## 2.5" BORE

## 1.25" OR 1.5" ROD

## CYLINDER

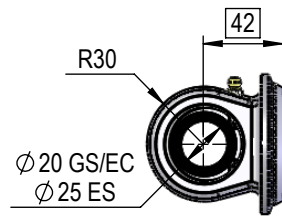
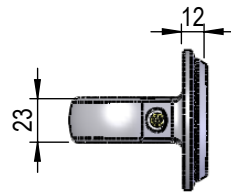
DIMENSIONS IN BOXES TO BE  
USED FOR BUILD LENGTH

### SPHERICAL BEARING

### SPHERICAL BEARING

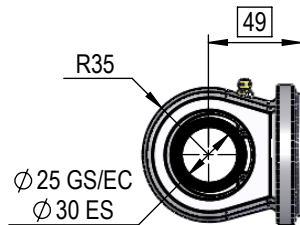
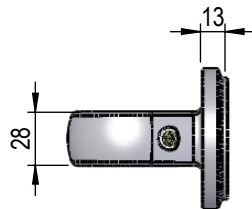
SB-250-25

B1



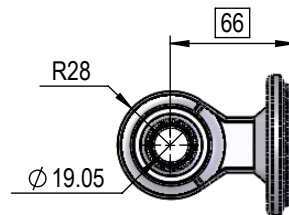
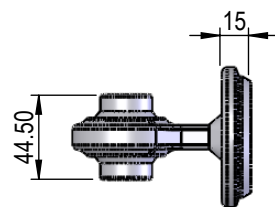
SB-250-30

B2



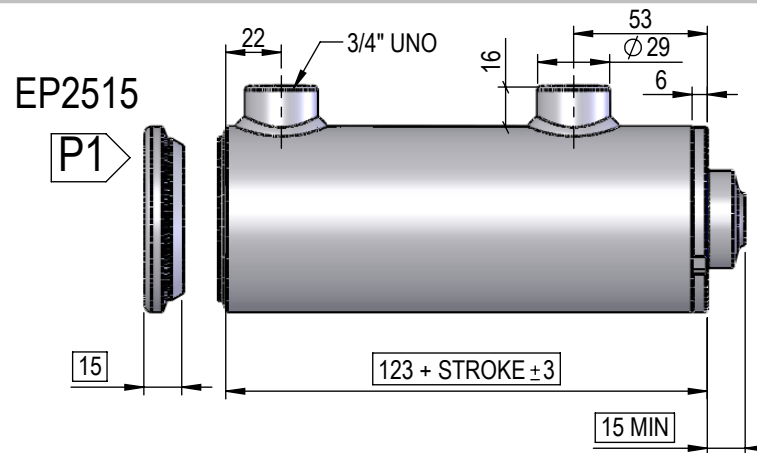
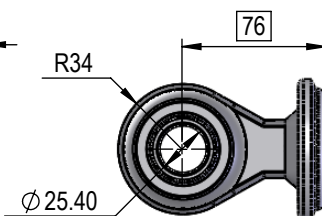
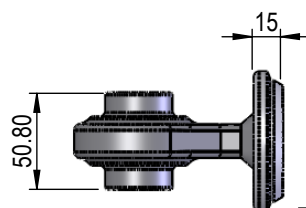
CAT1(S310)  
+ EP2515

L1

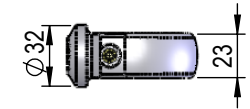
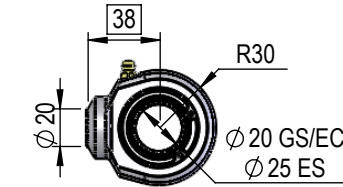
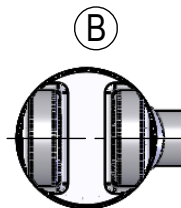
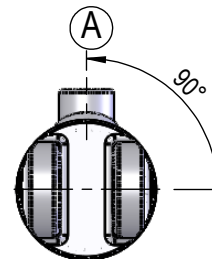


CAT2(S311)  
+ EP2515

L2

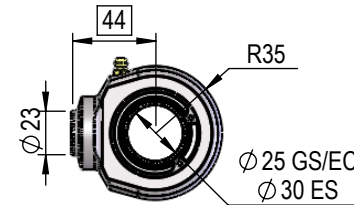


### PORT POSITION



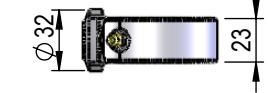
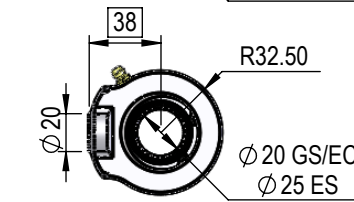
SBR25

B1



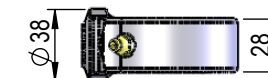
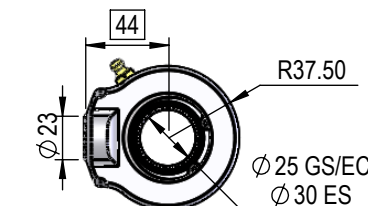
SBR30

B2



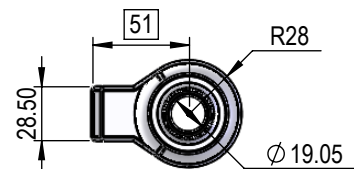
SBR25HD

B3



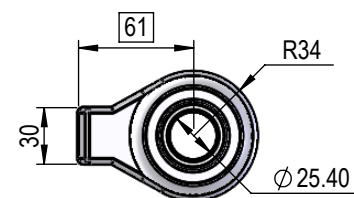
SBR30HD

B4



CAT1(S310)

L1



CAT2(S311)

L2

# NI SERIES

## 2.5" BORE

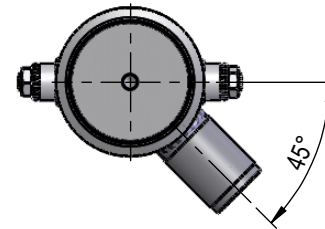
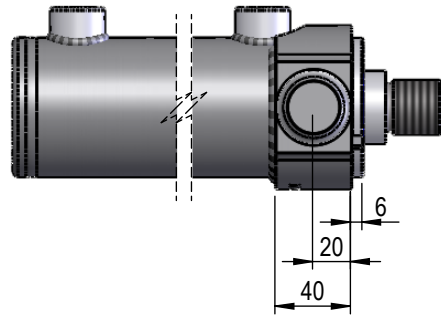
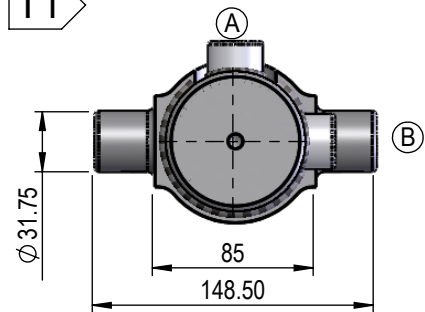
## 1.25" OR 1.5" ROD

## CYLINDER

### TRUNION MOUNT

TR25

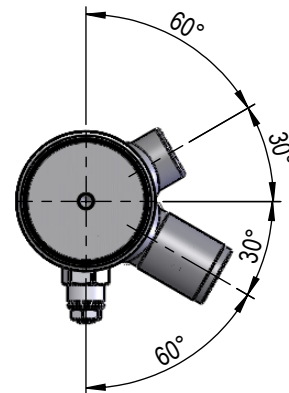
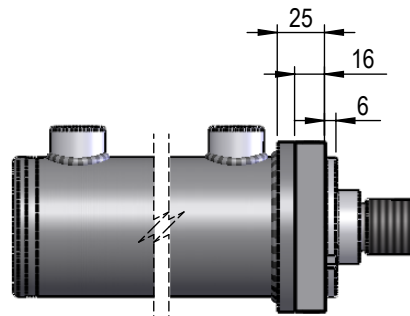
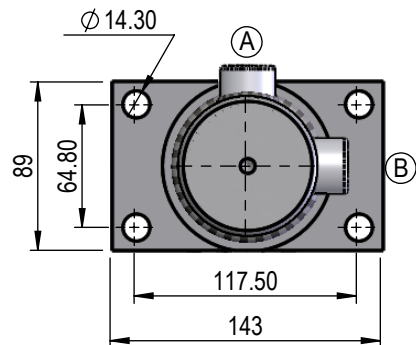
T1



### FLANGE MOUNT

NFPA25

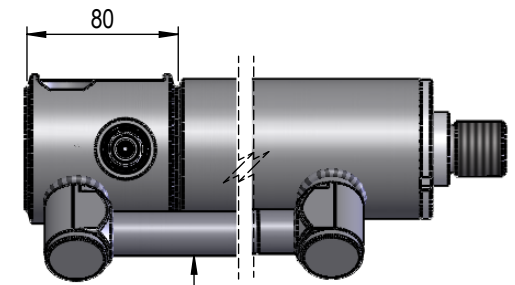
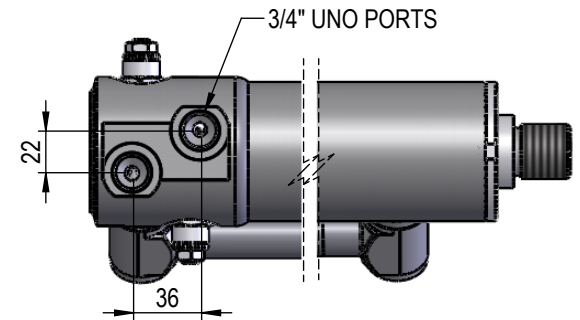
F1



### INTERNAL VALVE OPTIONS

#### Double Counterbalance Valve

Valve cavity Sun T11A  
60Lt Pilot operated check valves  
Or  
60Lt Counterbalance Valves



Transfer tube can be welded or use fittings

#### Single Counterbalance Valve

Valve cavity Sun T11A  
60Lt Pilot operated check valve  
Or  
60Lt Counterbalance Valve  
Base side holding

