

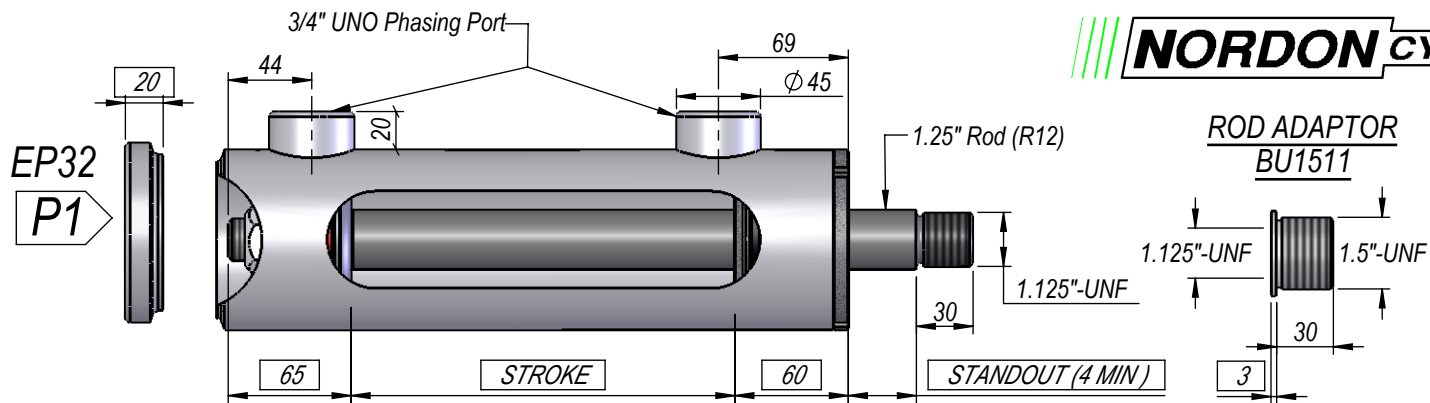
NIP SERIES

3.25" BORE

1.25" ROD

PHASING CYLINDER

DIMS IN BOXES TO BE
USED FOR BUILD LENGTH

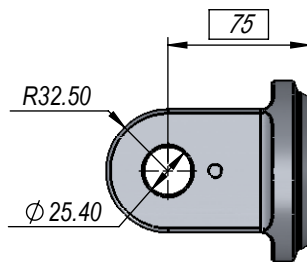
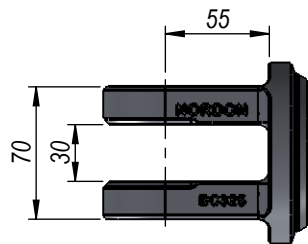


PHASING AVAILABLE AT
BOTH ENDS, OR AT EITHER
BASE OR ROD END ONLY.

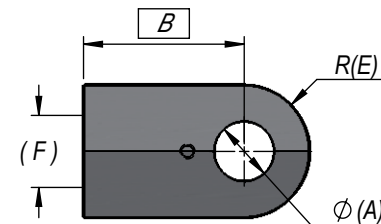
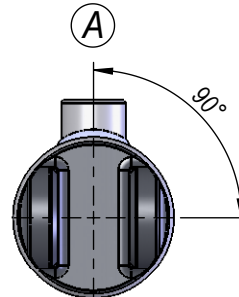
FEMALE CLEVIS

BC325

C1

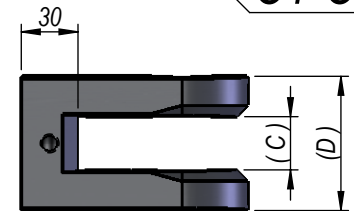


PORT POSITION



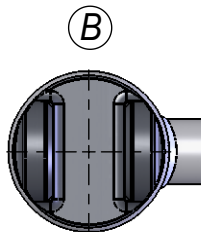
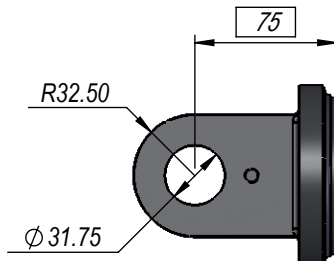
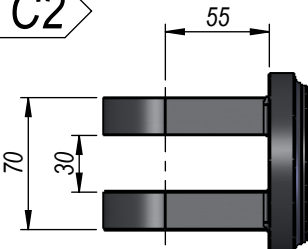
FEMALE CLEVIS

C1-C4



BC325B

C2



ROD FEMALE CLEVIS DIMENSIONS

A	B	C	D	E	F	PART NUMBER	CODE
25.4	75	28	64	32	1.125"-UNF	FRC025	C1
25.4	85	28	71	35	*1.5"-UNF	CL002	C2
31.75	85	28	71	35	*1.5"-UNF	CL002B	C3
31.75	85	44	84	40	*1.5"-UNF	FRC40	C4

* USE WITH ROD ADAPTOR BU1511 FOR 1.25" ROD

NOTE: ALL THREADS MACHINED TO 2A/B SPECIFICATION.
ALL PIN HOLES MACHINED TO D9 TOLERANCE.

THIS DRAWING AND THE INFORMATION IT CONTAINS IS THE PROPERTY OF NORDON HYDRAULICS PTY LTD
AND MAY NOT BE USED FOR ANY PURPOSE WITHOUT WRITTEN AUTHORISATION FROM THE COMPANY.
DRAWINGS SUBJECT TO CHANGE WITHOUT NOTICE. E&OE

STD. OPEN/CLOSED $\pm 3\text{mm}$

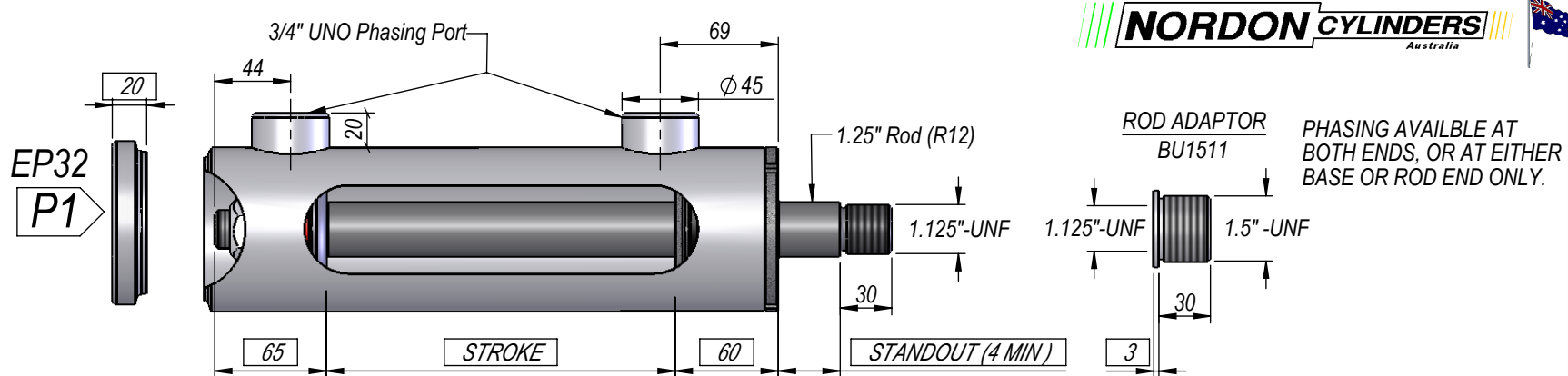
NIP SERIES

3.25" BORE

1.25" ROD

PHASING CYLINDER

DIMS IN BOXES TO BE
USED FOR BUILD LENGTH

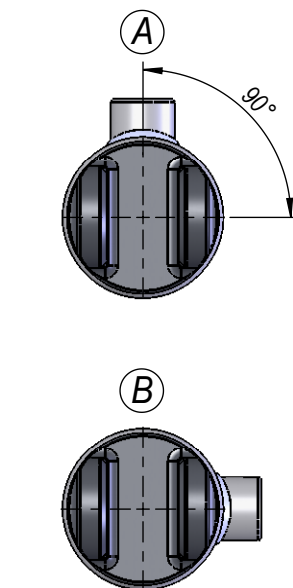


MALE LUG

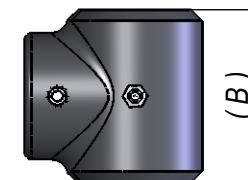
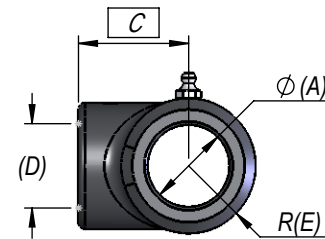
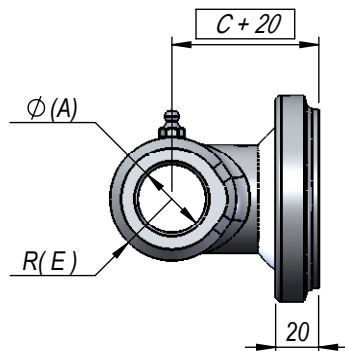
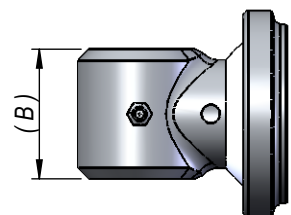
ROD PIN-EYE (E1-E9)
+ EP32

M1-M9

PORT POSITION



PIN EYE E1-E9



ROD PIN EYE DIMENSIONS

A	B	C	D	E	PART NUMBER	CODE
25.4	50	48	1.125"-UNF	25	EC10I50M11I	E1
25.4	60	48	1.125"-UNF	28.5	EC10I60M11I	E2
25.4	74	51	1.125"-UNF	20	EC10I51M74M	E3
25.4	90	51	1.125"-UNF	20	EC10I51M90M	E4
25.4	128	51	1.125"-UNF	20	EC10I51M128M	E5
31.75	50	48	1.125"-UNF	28.5	EC12I50M11I	E6
31.75	60	48	1.125"-UNF	28.5	EC12I60M11I	E7
31.75	60	51	1.5"-UNF	31	EC12I60M15I	E8
38.1	80	51	1.5"-UNF	31	EC15I80M15I	E9

NOTE: ALL THREADS MACHINED TO 2A/B SPECIFICATION.
ALL PIN HOLES MACHINED TO D9 TOLERANCE.

THIS DRAWING AND THE INFORMATION IT CONTAINS IS THE PROPERTY OF NORDON HYDRAULICS PTY LTD
AND MAY NOT BE USED FOR ANY PURPOSE WITHOUT WRITTEN AUTHORISATION FROM THE COMPANY.
DRAWINGS SUBJECT TO CHANGE WITHOUT NOTICE. E&OE

STD. OPEN/CLOSED $\pm 3mm$

NIP SERIES

3.25" BORE

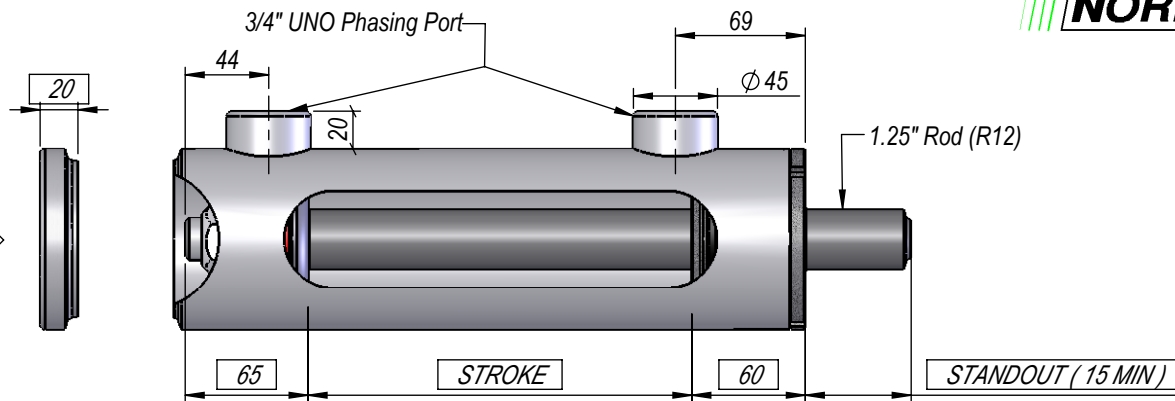
1.25" ROD

PHASING CYLINDER

DIMS IN BOXES TO BE
USED FOR BUILD LENGTH

EP32

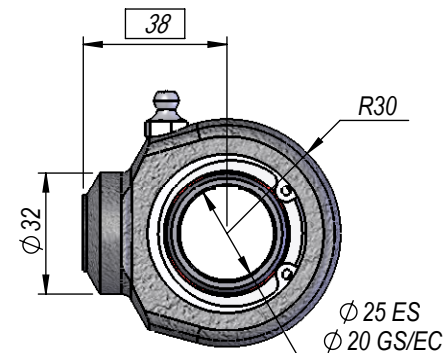
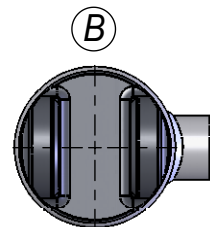
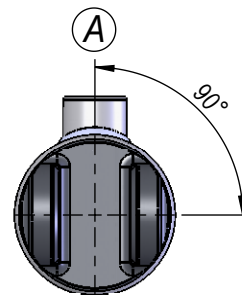
P1



PHASING AVAILBLE AT
BOTH ENDS, OR AT EITHER
BASE OR ROD END ONLY.

SPHERICAL BEARING

PORT POSITION



SBR25

B1

NOTE: ALL THREADS MACHINED TO 2A/B SPECIFICATION.
ALL PIN HOLES MACHINED TO D9 TOLERANCE.

THIS DRAWING AND THE INFORMATION IT CONTAINS IS THE PROPERTY OF NORDON HYDRAULICS PTY LTD
AND MAY NOT BE USED FOR ANY PURPOSE WITHOUT WRITTEN AUTHORISATION FROM THE COMPANY.
DRAWINGS SUBJECT TO CHANGE WITHOUT NOTICE. E&OE

STD. OPEN/CLOSED ±3mm