

NIP SERIES

4" BORE

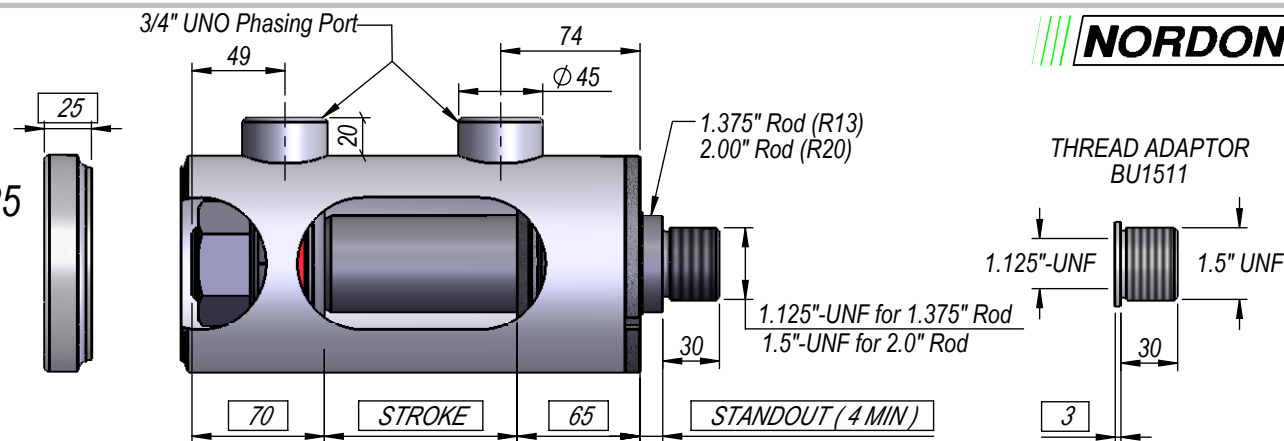
1.375" OR 2" ROD

PHASING CYLINDER

DIMS IN BOXES TO BE
USED FOR BUILD LENGTH

EP4025

P1

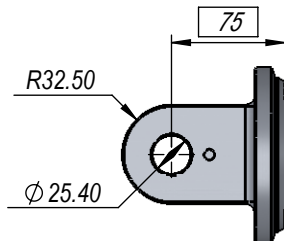
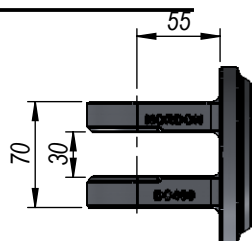


PHASING AVAILABLE
AT BOTH ENDS,
OR AT EITHER BASE
OR ROD END ONLY.

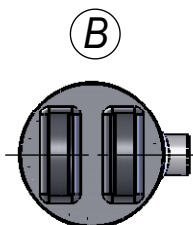
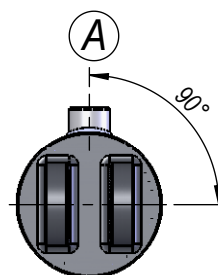
FEMALE CLEVIS

BC400

C1

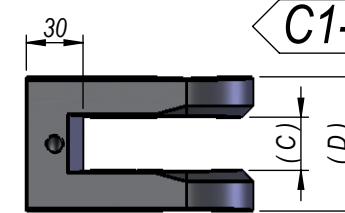
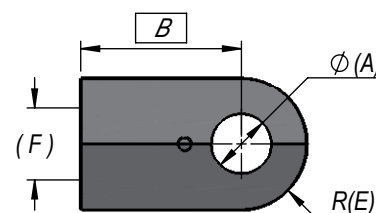


PORT POSITION



FEMALE CLEVIS

C1-C7

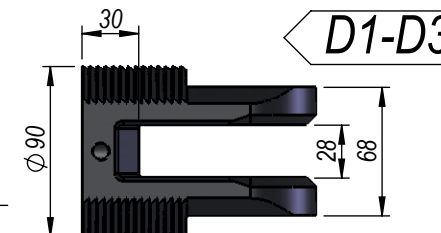
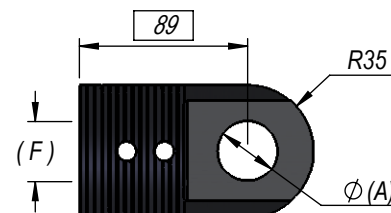


ROD END FEMALE CLEVIS DIMENSIONS

A	B	C	D	E	F	PART NUMBER	CODE
25.4	75	28	64	32	1.125"-UNF	FRC025	C5
25.4	89	28	69	25	1.125"-UNF	CL001	C6
25.4	75	28	59	32	1.125"-UNF	CLR001	C7
25.4	85	28	71	35	1.5"-UNF	CL002	C1
31.8	85	28	71	35	1.5"-UNF	CL002B	C2
31.8	85	44	84	40	1.5"-UNF	FRC40	C3

DEPTH STOP CLEVIS DIMENSIONS

A	B	C	D	E	F	PART NUMBER	CODE
25.4	89	28	68	35	1.125"-UNF	CLR-DS-10I-11I	D1
31.8	89	28	68	35	1.125"-UNF	CLR-DS-12I-11I	D2
31.8	89	28	68	35	1.5"-UNF	CLR-DS-12I-15I	D3



NOTE: ALL THREADS MACHINED TO 2A/B SPECIFICATION.
ALL PIN HOLES MACHINED TO D9 TOLERANCE.

THIS DRAWING AND THE INFORMATION IT CONTAINS IS THE PROPERTY OF NORDON HYDRAULICS PTY LTD
AND MAY NOT BE USED FOR ANY PURPOSE WITHOUT WRITTEN AUTHORISATION FROM THE COMPANY.
DRAWINGS SUBJECT TO CHANGE WITHOUT NOTICE. E&OE

STD. CLOSED/OPEN $\pm 3mm$

NIP SERIES

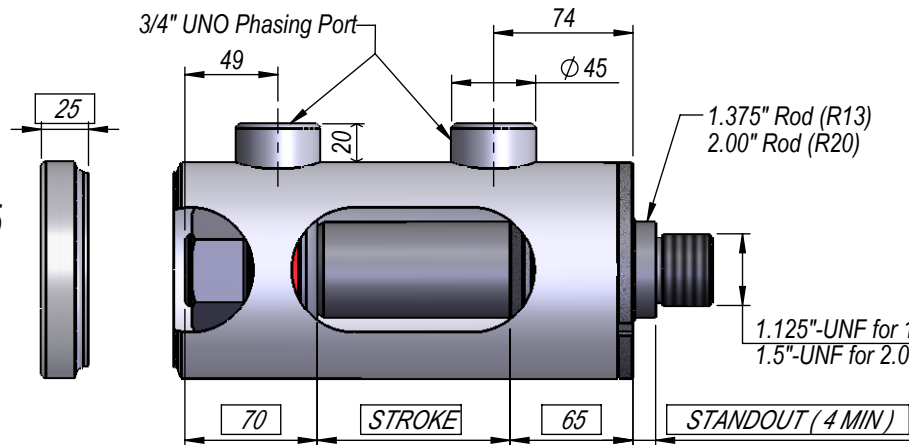
4" BORE

1.375" OR 2" ROD

PHASING CYLINDER

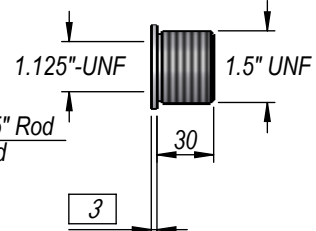
DIMS IN BOXES TO BE USED FOR BUILD LENGTH

EP4025
P1



THREAD ADAPTOR

BU1511



PHASING AVAILABLE AT BOTH ENDS, OR AT EITHER BASE OR ROD END ONLY.

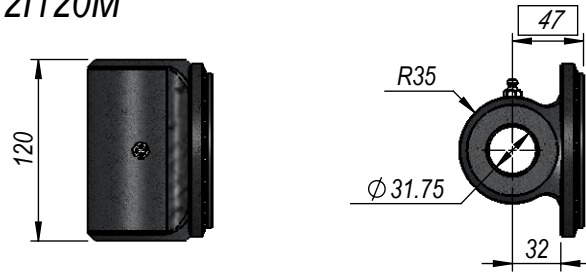
PIN-EYE

E1-E11

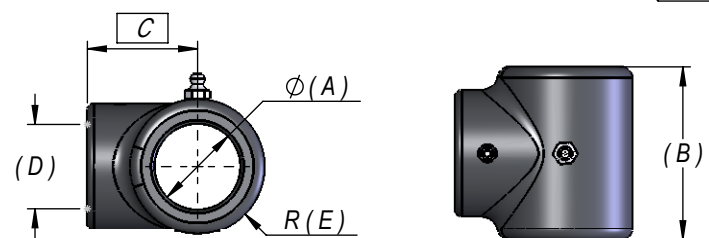
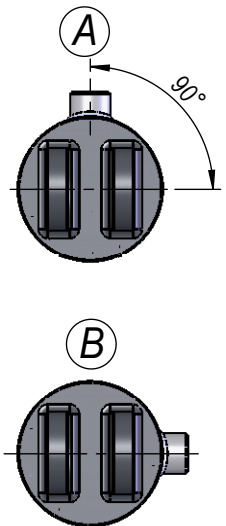
PIN-EYE

PBC400-121120M

E1

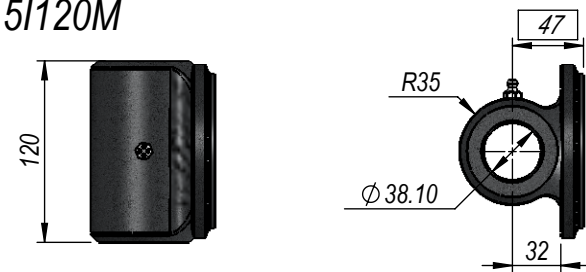


PORT POSITION



PBC400-151120M

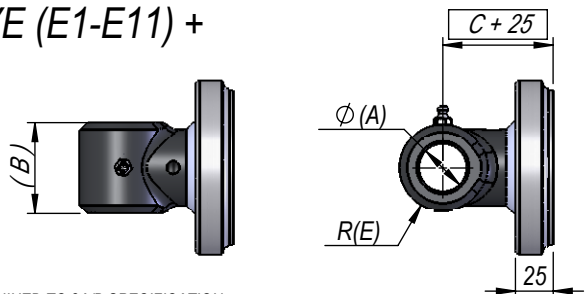
E2



MALE LUG

ROD PIN-EYE (E1-E11) + EP4025

M1-M11



ROD END PIN EYE DIMENSIONS						
A	B	C	D	E	PART NUMBER	CODE
25.4	50	48	1.125"-UNF	25	EC10I50M11I	E5
25.4	60	48	1.125"-UNF	28.5	EC10I60M11I	E6
25.4	74	51	1.125"-UNF	20	EC10I51M74M	E7
25.4	90	51	1.125"-UNF	20	EC10I51M90M	E8
25.4	128	51	1.125"-UNF	20	EC10I51M128M	E9
31.75	50	48	1.125"-UNF	28.5	EC12I50M11I	E10
31.75	60	48	1.125"-UNF	28.5	EC12I60M11I	E11
31.75	60	51	1.5"-UNF	31	EC12I60M15I	E4
38.1	80	51	1.5"-UNF	31	EC15I80M15I	E1

NOTE: ALL THREADS MACHINED TO 2A/B SPECIFICATION.
ALL PIN HOLES MACHINED TO D9 TOLERANCE.

THIS DRAWING AND THE INFORMATION IT CONTAINS IS THE PROPERTY OF NORDON HYDRAULICS PTY LTD AND MAY NOT BE USED FOR ANY PURPOSE WITHOUT WRITTEN AUTHORISATION FROM THE COMPANY. DRAWINGS SUBJECT TO CHANGE WITHOUT NOTICE. E&OE

STD. CLOSED/OPEN ± 3mm

NIP SERIES

4" BORE

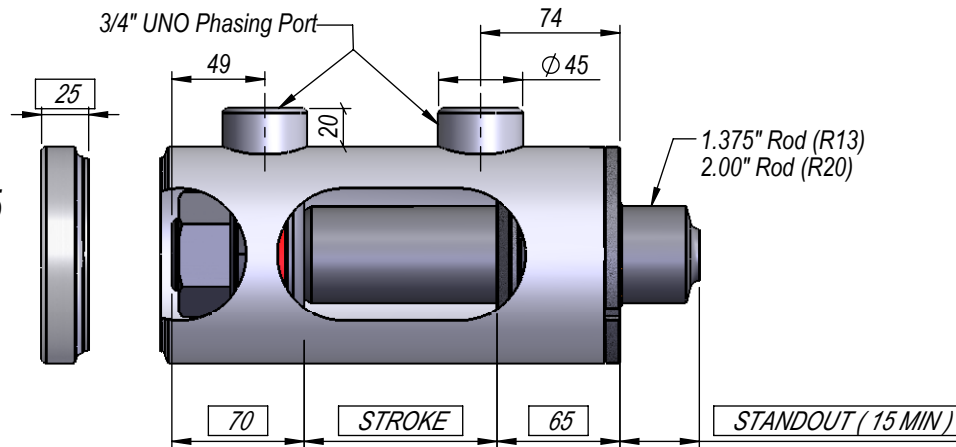
1.375" OR 2" ROD

PHASING CYLINDER

DIMS IN BOXES TO BE
USED FOR BUILD LENGTH

EP4025

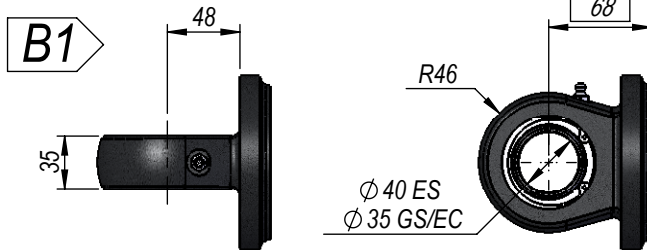
P1



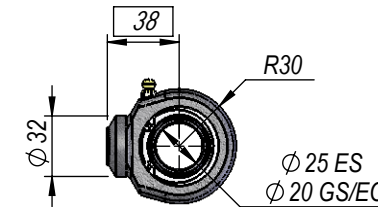
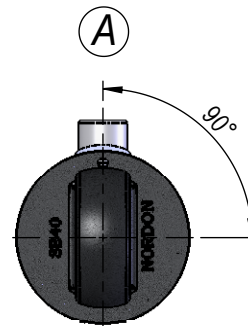
PHASING AVAILABLE
AT BOTH ENDS,
OR AT EITHER BASE
OR ROD END ONLY.

SPHERICAL BEARING

SB-400-40



PORT POSITION

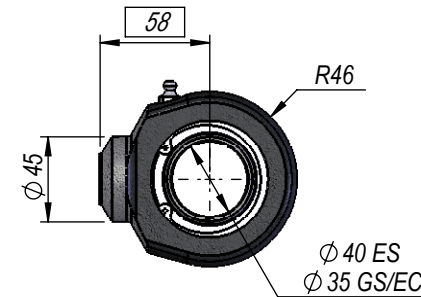
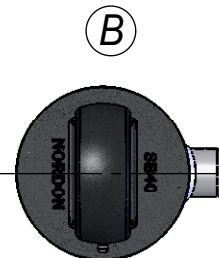
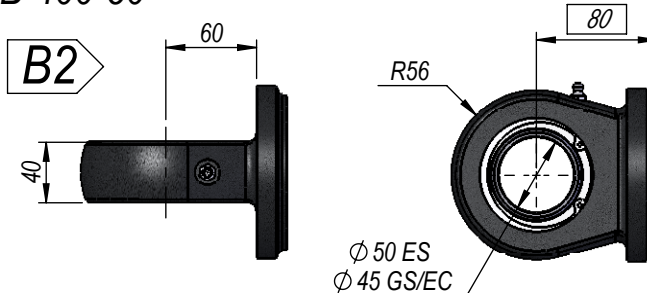


SBR25

B1

(SUIT 1.375" Rod)

SB-400-50



SBR40

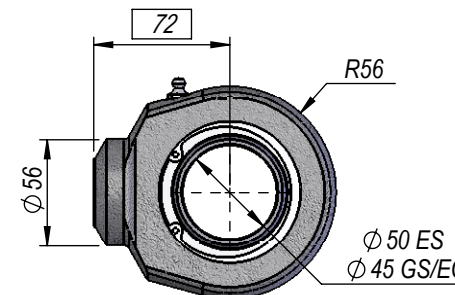
B2

(SUIT 2" Rod)

NOTE: ALL THREADS MACHINED TO 2A/B SPECIFICATION.
ALL PIN HOLES MACHINED TO D9 TOLERANCE.

THIS DRAWING AND THE INFORMATION IT CONTAINS IS THE PROPERTY OF NORDON HYDRAULICS PTY LTD
AND MAY NOT BE USED FOR ANY PURPOSE WITHOUT WRITTEN AUTHORISATION FROM THE COMPANY.
DRAWINGS SUBJECT TO CHANGE WITHOUT NOTICE. E&OE

STD. CLOSED/OPEN $\pm 3\text{mm}$



SBR50

B3

(SUIT 2" Rod)