

# NIP SERIES

## 5.0" BORE

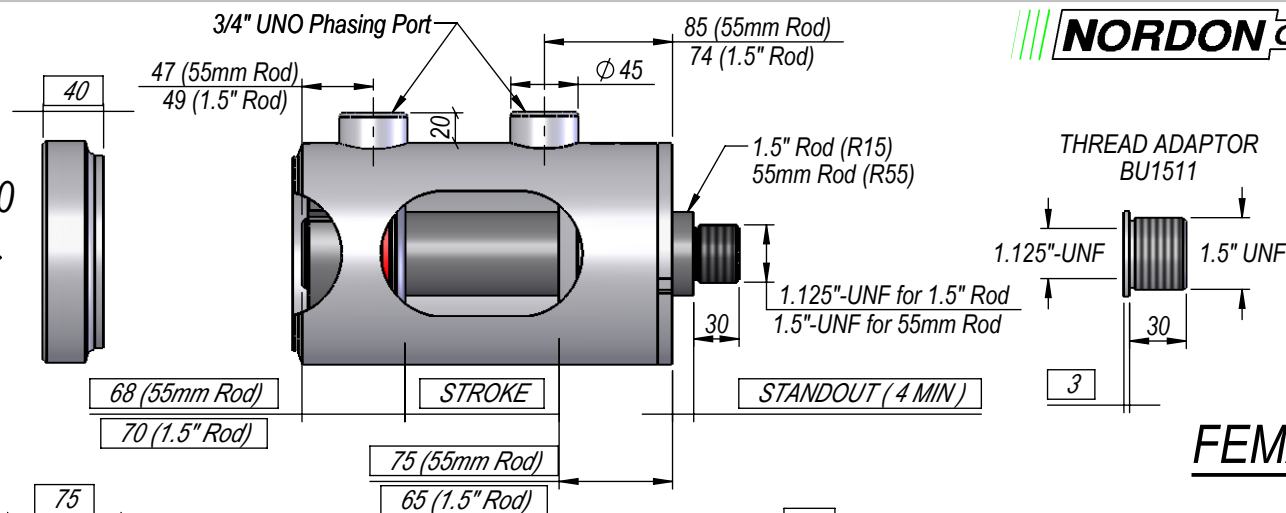
## 1.5" OR 55mm ROD

## PHASING CYLINDER

DIMS IN BOXES TO BE  
USED FOR BUILD LENGTH

EP5040

P1

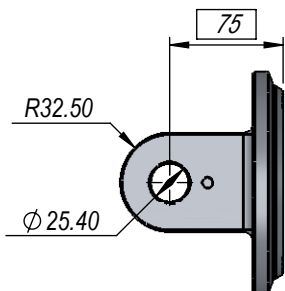
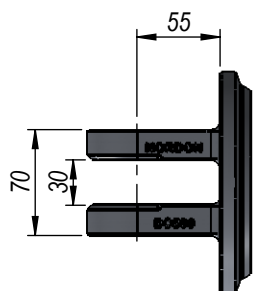


PHASING AVAILABLE  
AT BOTH ENDS,  
OR AT EITHER BASE  
OR ROD END ONLY.

## FEMALE CLEVIS

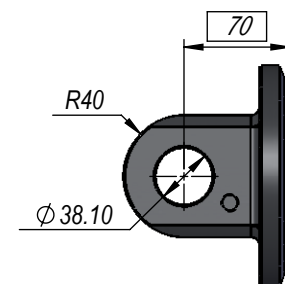
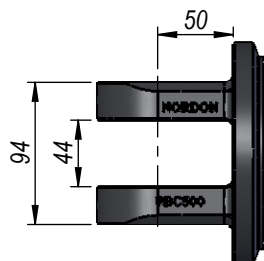
BC500

C1



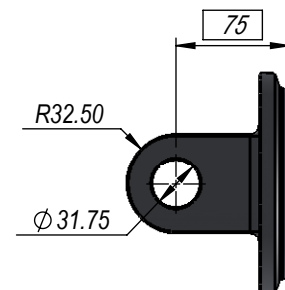
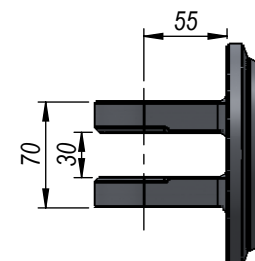
FBC500

C2

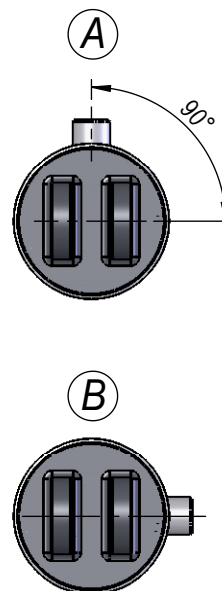


BC500B

C3

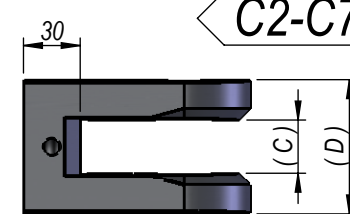
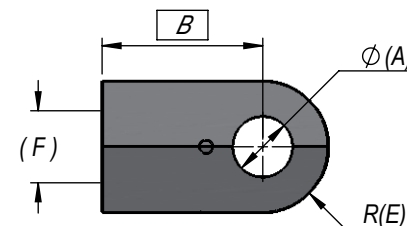


## PORT POSITION



## FEMALE CLEVIS

C2-C7

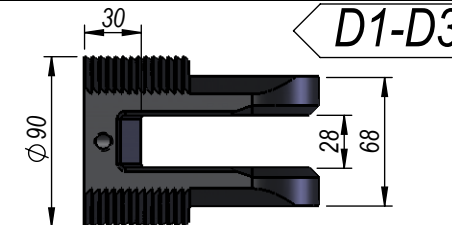
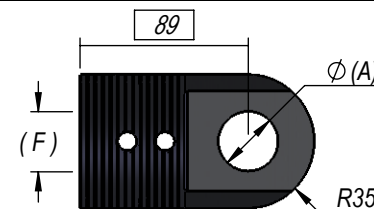


## ROD END FEMALE CLEVIS DIMENSIONS

A	B	C	D	E	F	PART NUMBER	CODE
25.4	75	28	64	32	1.125"-UNF	FRC025	C5
25.4	89	28	69	25	1.125"-UNF	CL001	C6
25.4	75	28	59	32	1.125"-UNF	CLR001	C7
25.4	85	28	71	35	1.5"-UNF	CL002	C3
31.75	85	28	71	35	1.5"-UNF	CL002B	C4
31.75	85	44	84	40	1.5"-UNF	FRC40	C2

## DEPTH STOP CLEVIS DIMENSIONS

A	B	C	D	E	F	PART NUMBER	CODE
25.4	89	28	68	35	1.125"-UNF	CLR-DS-10I-11I	D1
31.75	89	28	68	35	1.125"-UNF	CLR-DS-12I-11I	D2
31.75	89	28	68	35	1.5"-UNF	CLR-DS-12I-15I	D3



NOTE: ALL THREADS MACHINED TO 2A/B SPECIFICATION.  
ALL PIN HOLES MACHINED TO D9 TOLERANCE.

THIS DRAWING AND THE INFORMATION IT CONTAINS IS THE PROPERTY OF NORDON HYDRAULICS PTY LTD  
AND MAY NOT BE USED FOR ANY PURPOSE WITHOUT WRITTEN AUTHORISATION FROM THE COMPANY.  
DRAWINGS SUBJECT TO CHANGE WITHOUT NOTICE. E&OE

STD. CLOSED/OPEN  $\pm 3mm$

# NIP SERIES

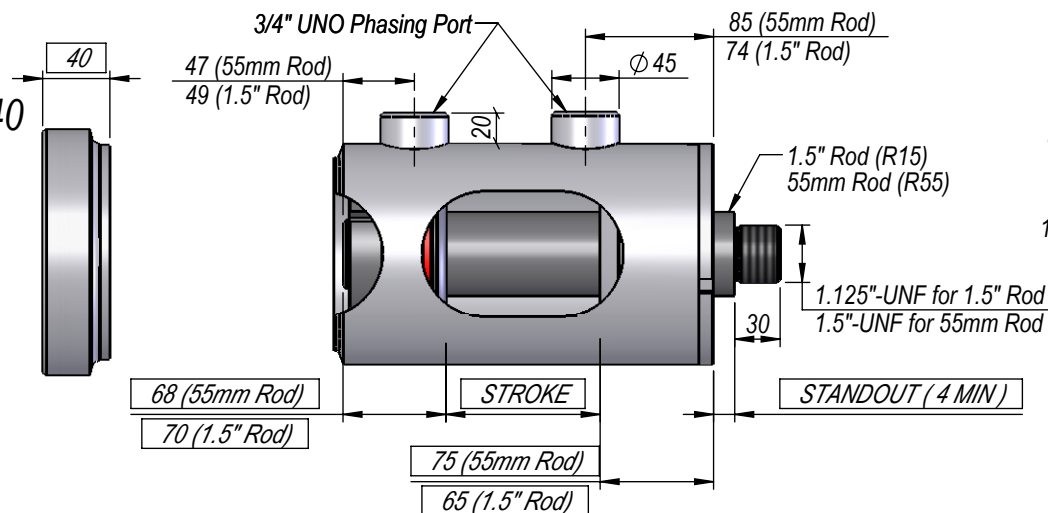
## 5.0" BORE

## 1.5" OR 55mm ROD

## PHASING CYLINDER

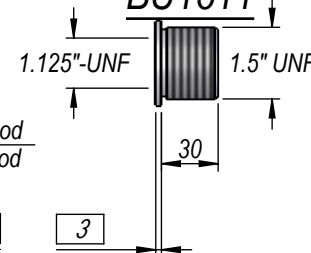
DIMS IN BOXES TO BE  
USED FOR BUILD LENGTH

EP5040  
P1



### THREAD ADAPTOR

#### BU1511

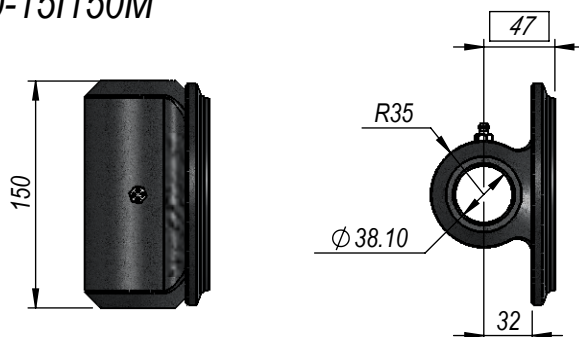


PHASING AVAILABLE  
AT BOTH ENDS,  
OR AT EITHER BASE  
OR ROD END ONLY.

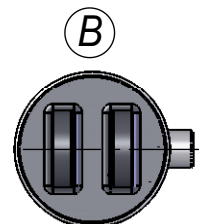
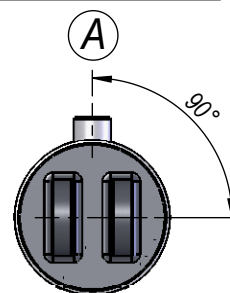
## PIN-EYE

PBC500-15I150M

E1

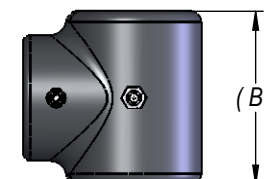
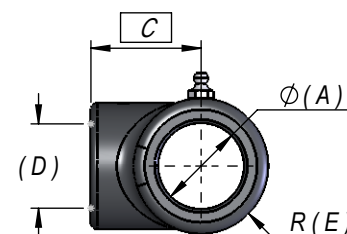


### PORT POSITION



## PIN-EYE

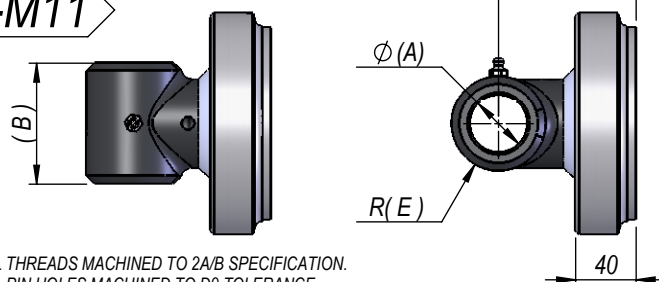
E2-E11



## MALE LUG

ROD PIN-EYE (E2-E11) +  
EP5040

M2-M11



NOTE: ALL THREADS MACHINED TO 2A/B SPECIFICATION.  
ALL PIN HOLES MACHINED TO D9 TOLERANCE.

THIS DRAWING AND THE INFORMATION IT CONTAINS IS THE PROPERTY OF NORDON HYDRAULICS PTY LTD  
AND MAY NOT BE USED FOR ANY PURPOSE WITHOUT WRITTEN AUTHORISATION FROM THE COMPANY.  
DRAWINGS SUBJECT TO CHANGE WITHOUT NOTICE. E&OE

STD. CLOSED/OPEN  $\pm 3\text{mm}$

### ROD END PIN EYE DIMENSIONS

A	B	C	D	E	PART NUMBER	CODE
25.4	50	48	1.125"-UNF	25	EC10I50M11I	E5
25.4	60	48	1.125"-UNF	28.5	EC10I60M11I	E6
25.4	74	51	1.125"-UNF	20	EC10I51M74M	E7
25.4	90	51	1.125"-UNF	20	EC10I51M90M	E8
25.4	128	51	1.125"-UNF	20	EC10I51M128M	E9
31.75	50	48	1.125"-UNF	28.5	EC12I50M11I	E10
31.75	60	48	1.125"-UNF	28.5	EC12I60M11I	E11
31.75	60	51	1.5"-UNF	31	EC12I60M15I	E2
38.1	80	51	1.5"-UNF	31	EC15I80M15I	E4

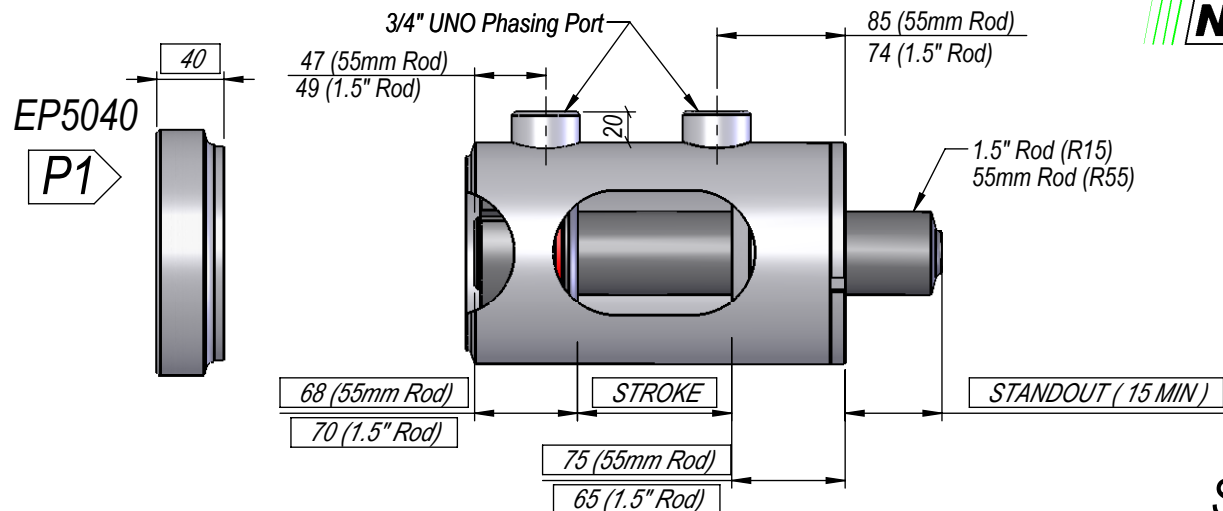
# NIP SERIES

## 5.0" BORE

## 1.5" OR 55mm ROD

## PHASING CYLINDER

DIMS IN BOXES TO BE  
USED FOR BUILD LENGTH



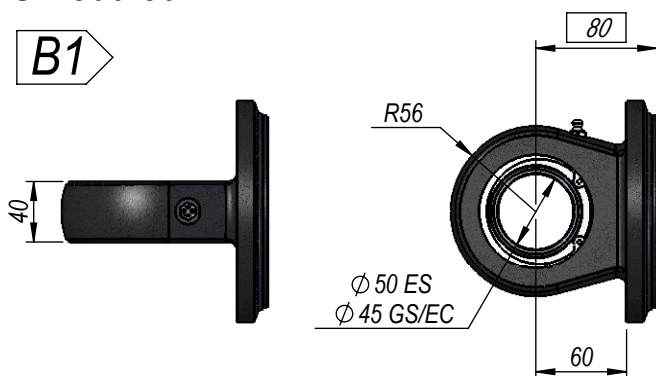
PHASING AVAILABLE  
AT BOTH ENDS,  
OR AT EITHER BASE  
OR ROD END ONLY.

## SPHERICAL BEARING

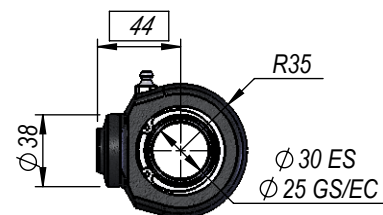
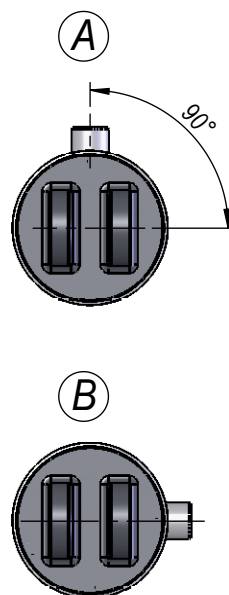
## SPHERICAL BEARING

SB-500-50

B1



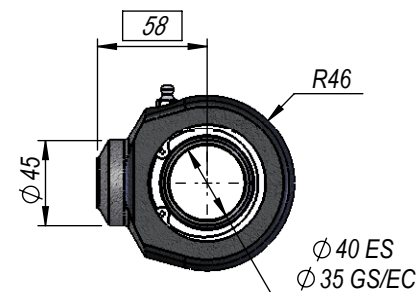
## PORT POSITION



SBR30

B1

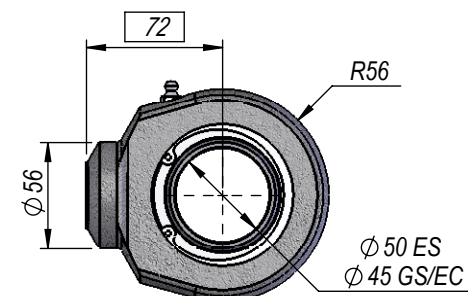
( SUIT 1.5" Rod )



SBR40

B2

( SUIT 55mm Rod )



SBR50

B3

( SUIT 55mm Rod )

NOTE: ALL THREADS MACHINED TO 2A/B SPECIFICATION.  
ALL PIN HOLES MACHINED TO D9 TOLERANCE.

THIS DRAWING AND THE INFORMATION IT CONTAINS IS THE PROPERTY OF NORDON HYDRAULICS PTY LTD  
AND MAY NOT BE USED FOR ANY PURPOSE WITHOUT WRITTEN AUTHORISATION FROM THE COMPANY.  
DRAWINGS SUBJECT TO CHANGE WITHOUT NOTICE. E&OE

STD. CLOSED/OPEN  $\pm 3mm$

VERSION 1 - SEPTEMBER 2012