

NIP SERIES

5.5" BORE

2.25" ROD

PHASING CYLINDER

EP5530

P1

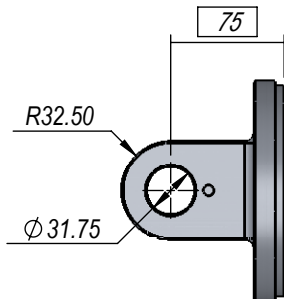
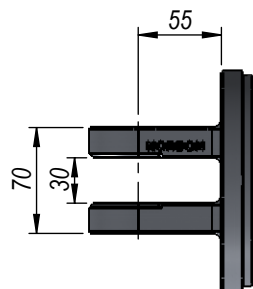
DIMS IN BOXES TO BE
USED FOR BUILD LENGTH

PHASING AVAILABLE AT
BOTH ENDS,
OR AT EITHER BASE OR
ROD END ONLY.

FEMALE CLEVIS

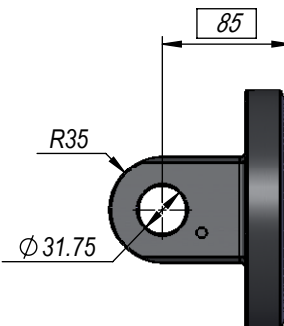
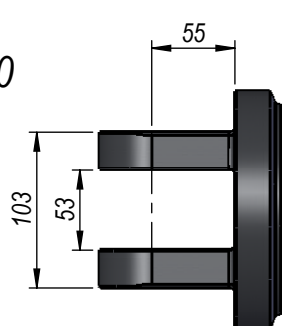
BC550

C1

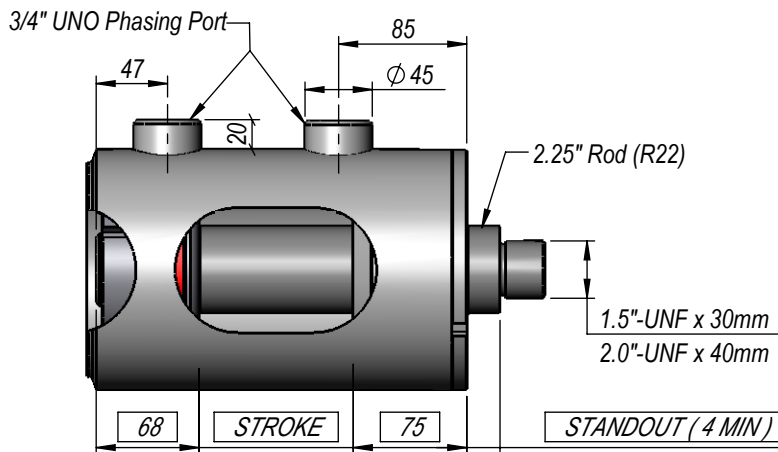
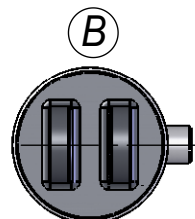
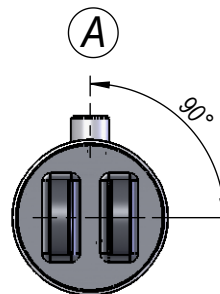


FBC550

C2

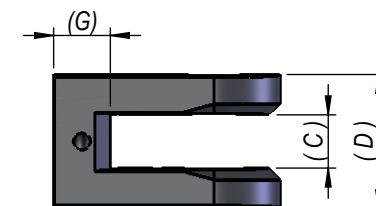
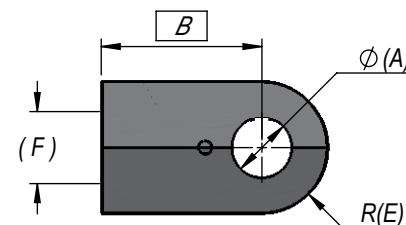


PORT POSITION



FEMALE CLEVIS

C1-C4



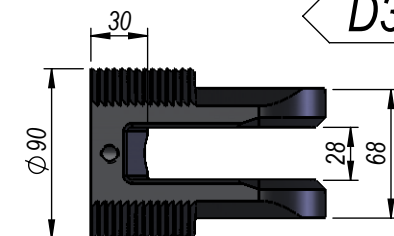
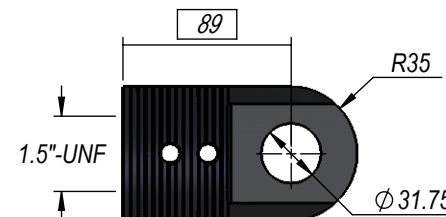
ROD END FEMALE CLEVIS DIMENSIONS

A	B	C	D	E	F	G	PART NUMBER	CODE
25.4	85	28	71	35	1.5"-UNF	30	CL002	C1
31.75	85	28	71	35	1.5"-UNF	30	CL002B	C2
31.75	85	44	84	40	1.5"-UNF	30	FRC040	C3
38.1	95	44	94	40	2.0"-UNF	40	FRC050	C4

DEPTH STOP CLEVIS

CLR-DS-12I-15I

D3



NOTE: ALL THREADS MACHINED TO 2A/B SPECIFICATION.
ALL PIN HOLES MACHINED TO D9 TOLERANCE.

THIS DRAWING AND THE INFORMATION IT CONTAINS IS THE PROPERTY OF NORDON HYDRAULICS PTY LTD
AND MAY NOT BE USED FOR ANY PURPOSE WITHOUT WRITTEN AUTHORISATION FROM THE COMPANY.
DRAWINGS SUBJECT TO CHANGE WITHOUT NOTICE. E&OE

STD. CLOSED/OPEN $\pm 3mm$

NIP SERIES

5.5" BORE

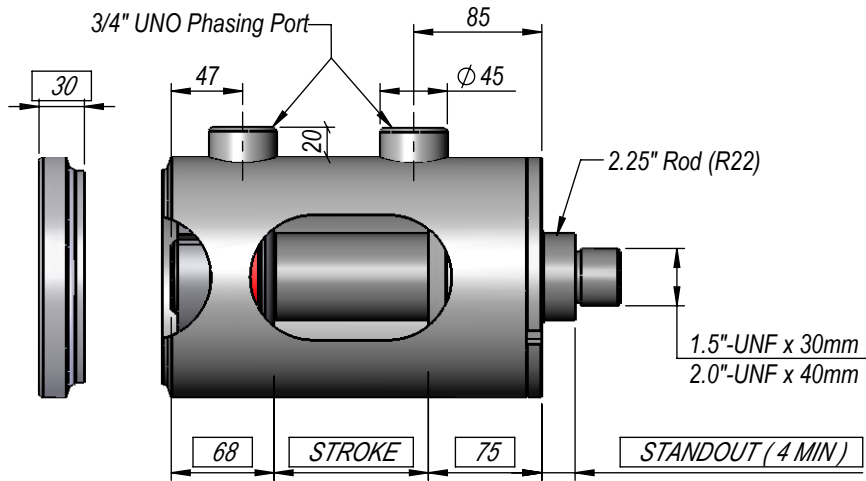
2.25" ROD

PHASING CYLINDER

DIMS IN BOXES TO BE
USED FOR BUILD LENGTH

EP5530

P1

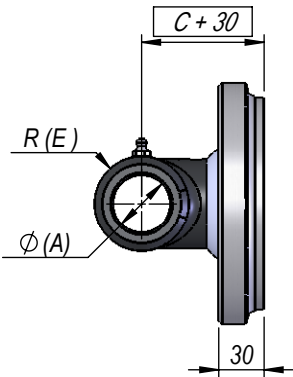
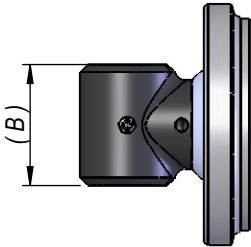


PHASING AVAILABLE AT
BOTH ENDS,
OR AT EITHER BASE OR
ROD END ONLY.

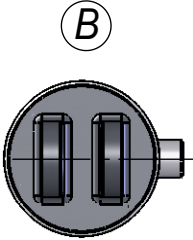
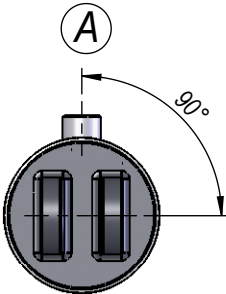
MALE LUG

ROD PIN-EYE (E1-E3) +
EP5530

M1-M3

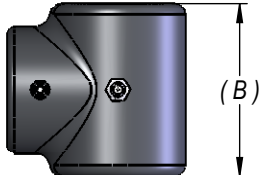
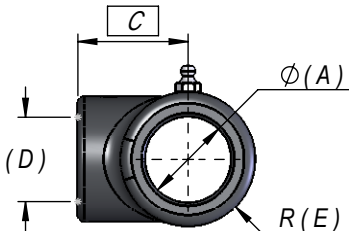


PORT POSITION



PIN-EYE

E1-E3



ROD END PIN EYE DIMENSIONS						
A	B	C	D	E	PART NUMBER	CODE
31.75	60	51	1.5"-UNF	31	EC12I60M15I	E1
38.1	80	51	1.5"-UNF	31	EC15I80M15I	E2
38.1	80	70	2.0"-UNF	40	EC15I80M20I	E3

NOTE: ALL THREADS MACHINED TO 2A/B SPECIFICATION.
ALL PIN HOLES MACHINED TO D9 TOLERANCE.

THIS DRAWING AND THE INFORMATION IT CONTAINS IS THE PROPERTY OF NORDON HYDRAULICS PTY LTD
AND MAY NOT BE USED FOR ANY PURPOSE WITHOUT WRITTEN AUTHORISATION FROM THE COMPANY.
DRAWINGS SUBJECT TO CHANGE WITHOUT NOTICE. E&OE

STD. CLOSED/OPEN ± 3mm

NIP SERIES

5.5" BORE

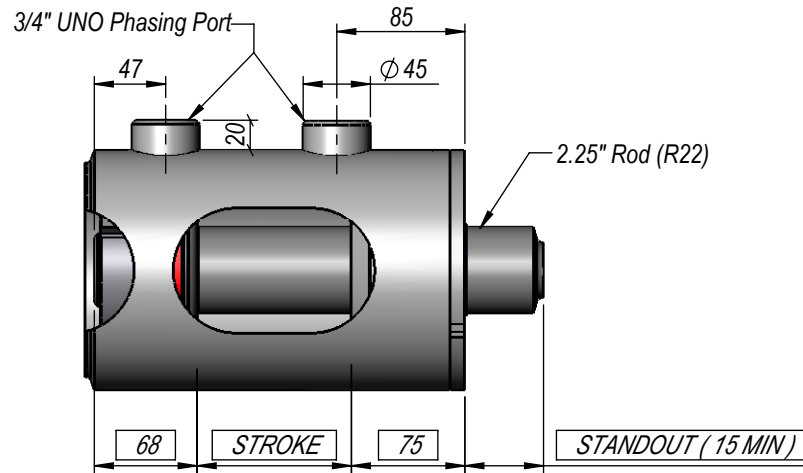
2.25" ROD

PHASING CYLINDER

DIMS IN BOXES TO BE
USED FOR BUILD LENGTH

EP5530

P1



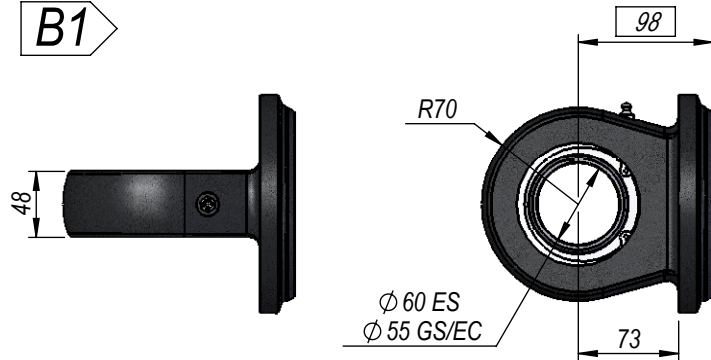
PHASING AVAILABLE AT
BOTH ENDS,
OR AT EITHER BASE OR
ROD END ONLY.

SPHERICAL BEARING

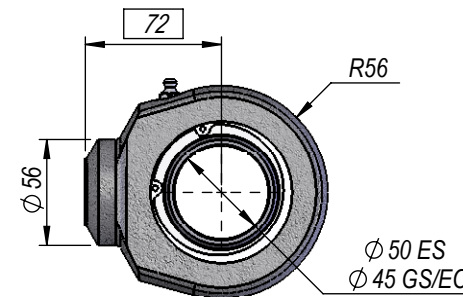
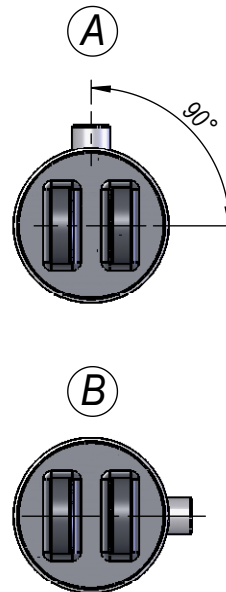
SPHERICAL BEARING

SB-550-60

B1

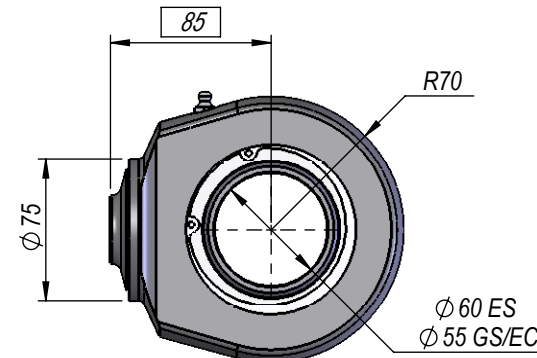
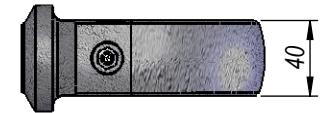


PORT POSITION



SBR50

B1



SBR60-2.5WP

B2



NOTE: ALL THREADS MACHINED TO 2A/B SPECIFICATION.
ALL PIN HOLES MACHINED TO D9 TOLERANCE.

THIS DRAWING AND THE INFORMATION IT CONTAINS IS THE PROPERTY OF NORDON HYDRAULICS PTY LTD
AND MAY NOT BE USED FOR ANY PURPOSE WITHOUT WRITTEN AUTHORISATION FROM THE COMPANY.
DRAWINGS SUBJECT TO CHANGE WITHOUT NOTICE. E&OE

STD. CLOSED/OPEN $\pm 3\text{mm}$