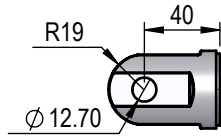
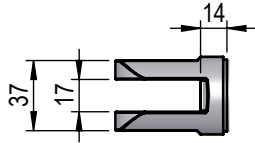


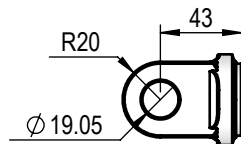
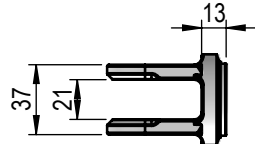
Appendix 1: Base Female Clevis



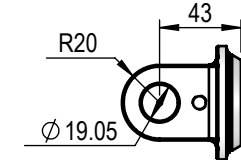
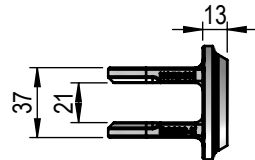
BC150



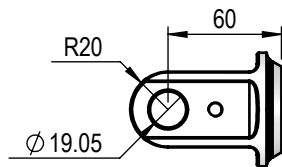
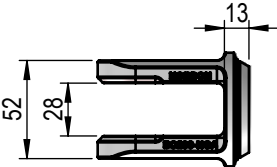
BC150-K



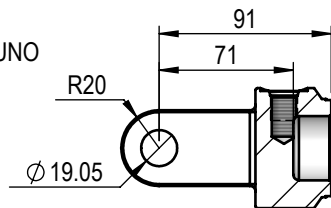
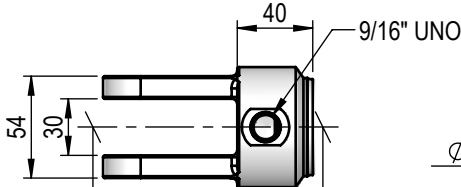
BC200-K



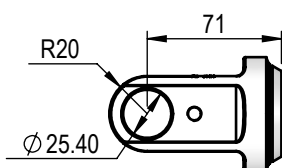
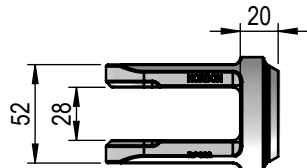
BC200-NGA



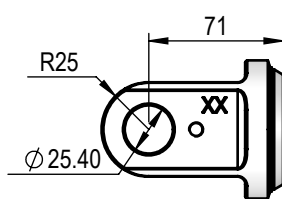
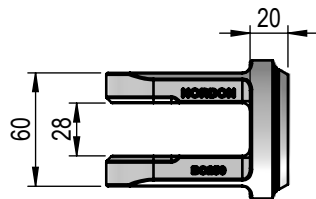
BCP200



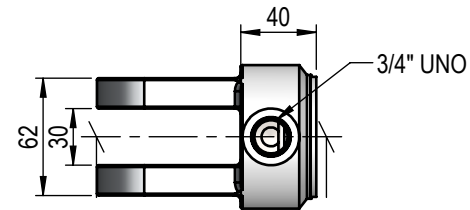
BC200



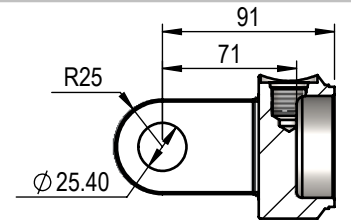
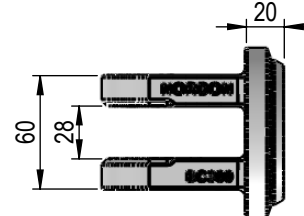
BC250



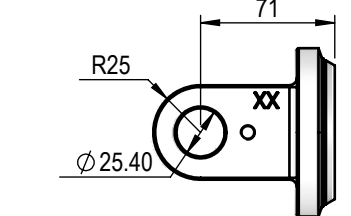
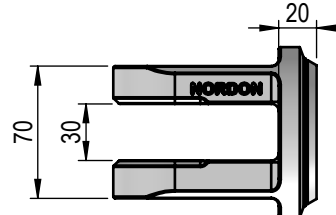
BCP250



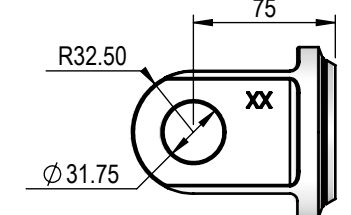
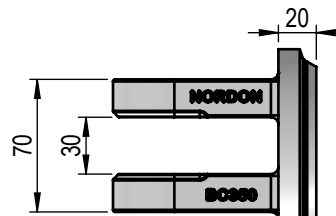
BC300



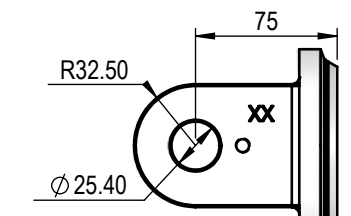
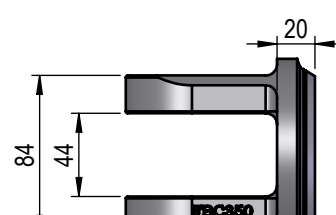
BC300B



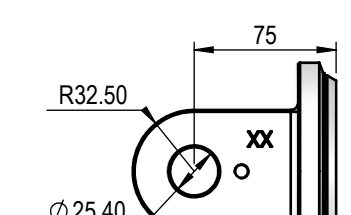
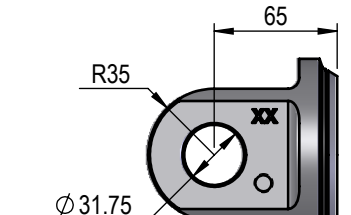
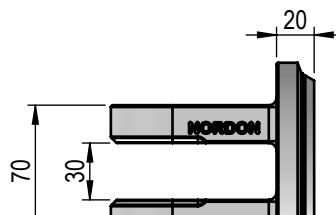
BC350



FBC350



BC400



THIS DRAWING AND THE INFORMATION IT CONTAINS IS THE PROPERTY OF NORDON HYDRAULICS PTY LTD AND MAY NOT BE USED FOR ANY PURPOSE WITHOUT WRITTEN AUTHORISATION FROM THE COMPANY. DRAWINGS SUBJECT TO CHANGE WITHOUT NOTICE. E&OE

NOTE: ALL THREADS MACHINED TO 2A/B SPECIFICATION. ALL PIN HOLES MACHINED TO D9 TOLERANCE.

