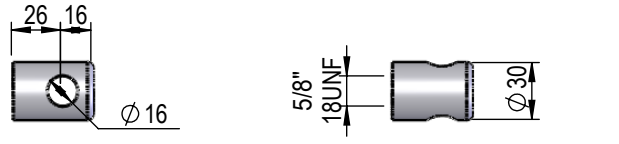
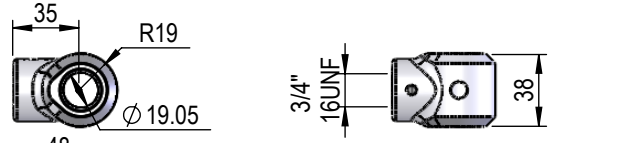


Appendix 5: Rod Pin Eyes

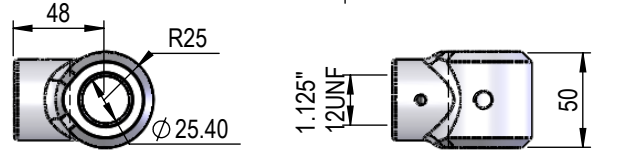
E16M30M06I



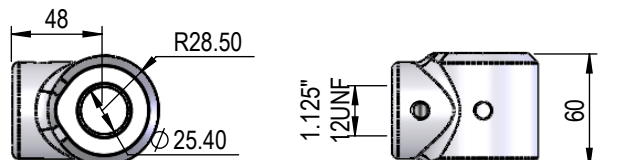
EC07I38M07I



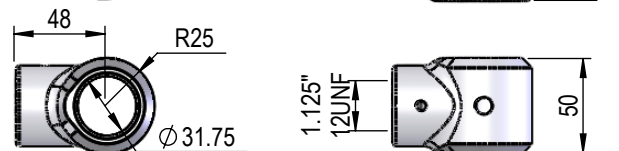
EC10I50M11I



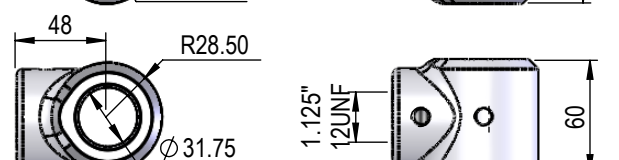
EC10I60M11I



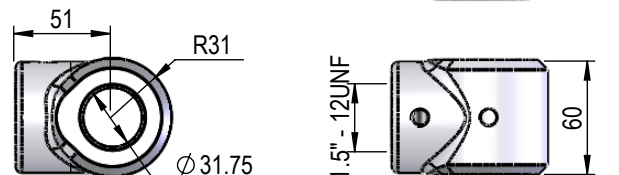
EC12I50M11I



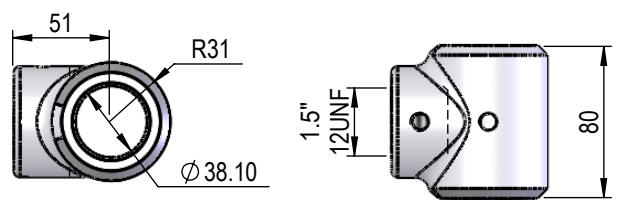
EC12I60M11I



EC12I60M15I



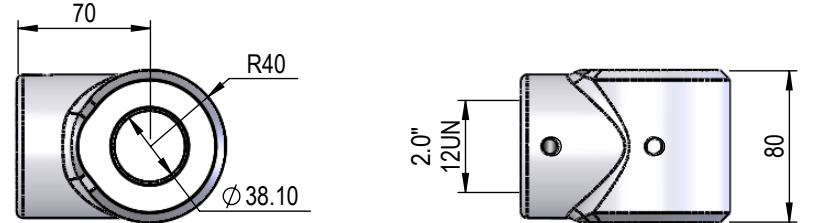
EC15I80M15I



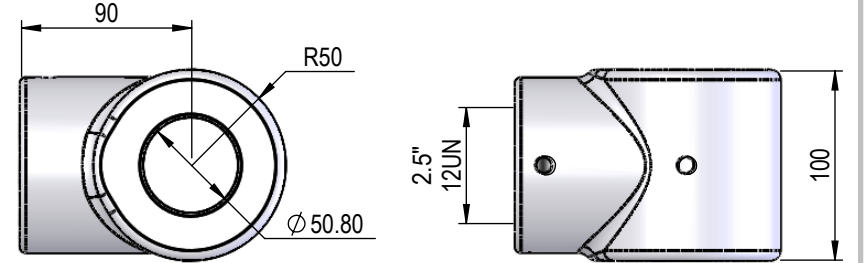
EC40M80M15I



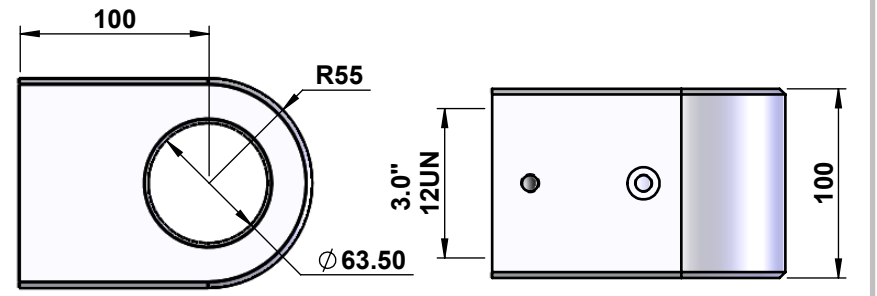
E15I80M20I



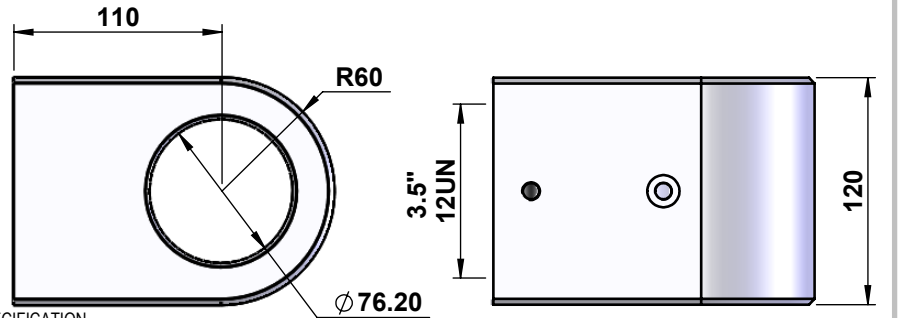
EC20I100M25I



EC25I100M30I



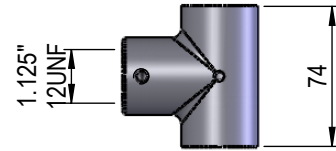
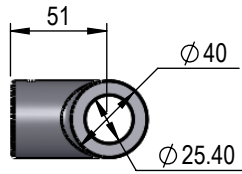
EC30I120M35I



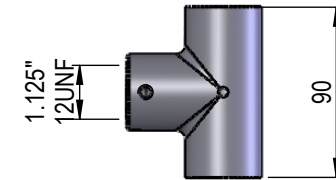
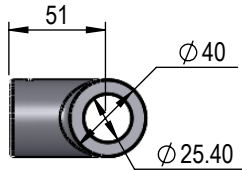
NOTE:
ALL THREADS MACHINED TO 2A/B SPECIFICATION.
ALL PIN HOLES MACHINED TO D9 TOLERANCE.

THIS DRAWING AND THE INFORMATION IT CONTAINS IS THE PROPERTY OF NORDON HYDRAULICS PTY LTD AND MAY NOT BE USED FOR ANY PURPOSE WITHOUT WRITTEN AUTHORISATION FROM THE COMPANY. DRAWINGS SUBJECT TO CHANGE WITHOUT NOTICE. E&OE

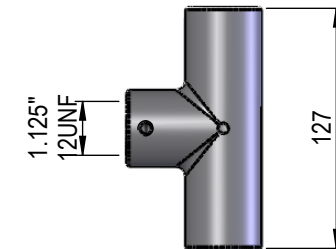
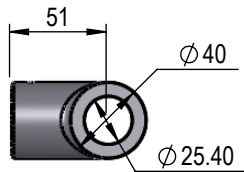
EC10I51M74M



EC10I51M90M



EC10I51M128M



NOTE: ALL THREADS MACHINED TO 2A/B SPECIFICATION.
ALL PIN HOLES MACHINED TO D9 TOLERANCE.

THIS DRAWING AND THE INFORMATION IT CONTAINS IS THE PROPERTY OF NORDON HYDRAULICS PTY LTD
AND MAY NOT BE USED FOR ANY PURPOSE WITHOUT WRITTEN AUTHORISATION FROM THE COMPANY.
DRAWINGS SUBJECT TO CHANGE WITHOUT NOTICE. E&OE