

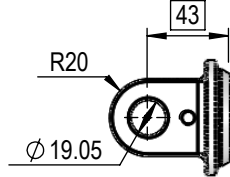
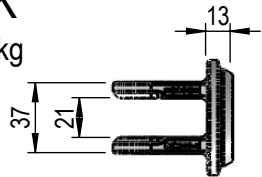
# NI SERIES 2.0" BORE 1.0" OR 1.25" ROD CYLINDER

## FEMALE CLEVIS

### BC200-K

HS = 3756 kg

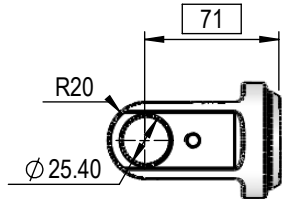
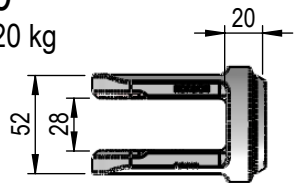
**C1**



### BC200

HS = 3520 kg

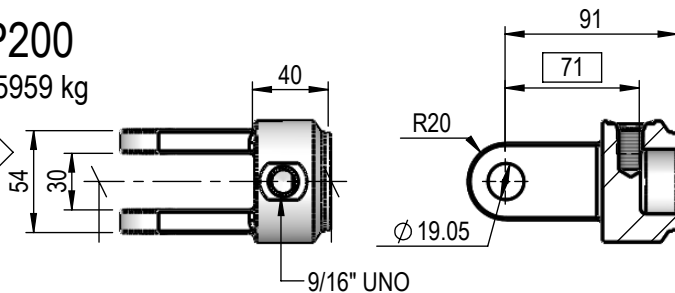
**C2**



### BCP200

HS = 5959 kg

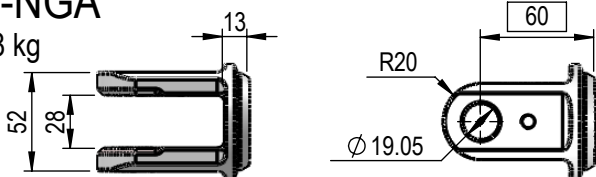
**C3**



### BC200-NGA

HS = 5328 kg

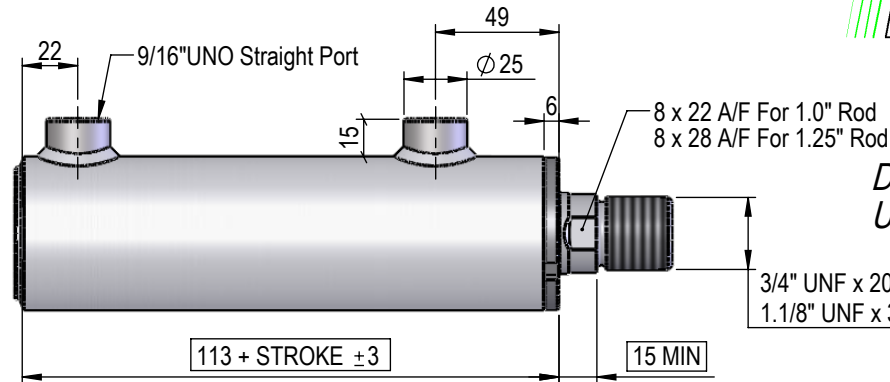
**C4**



EP2012

**P1**

12

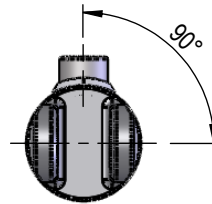


*DIMENSIONS IN BOXES TO BE  
USED FOR BUILD LENGTH*

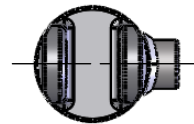
3/4" UNF x 20mm For 1.0" Rod  
1.1/8" UNF x 30mm For 1.25" Rod

## PORT POSITION

**A**



**B**

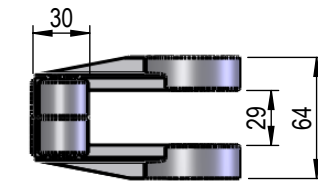


## FEMALE CLEVIS

### AC001

HS = 11036 kg

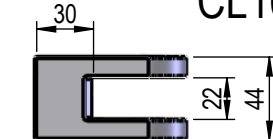
**A1**



### CL16M60M22M11I

HS = 6259 kg

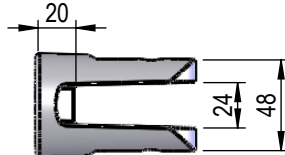
**C1**



### CLR000

HS = 4614 kg

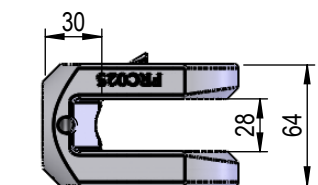
**C2**



### FRC025

HS = 12939 kg

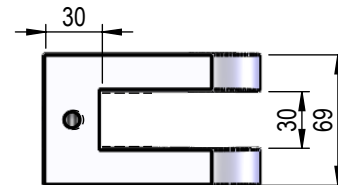
**C3**



### CL001

HS = 12463 kg

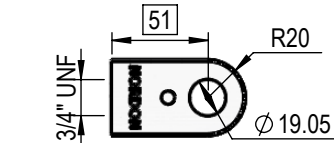
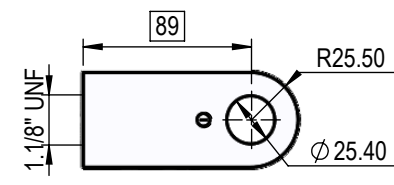
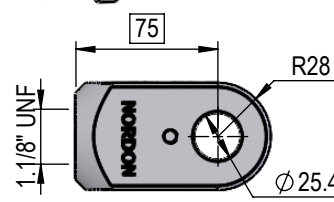
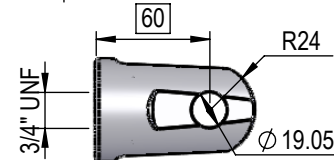
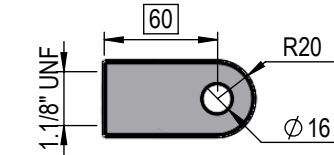
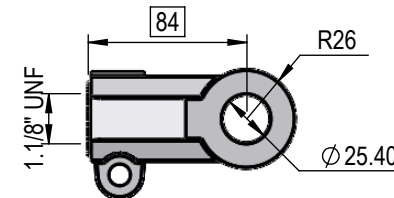
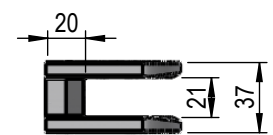
**C4**



### FRC020

HS = 3948 kg

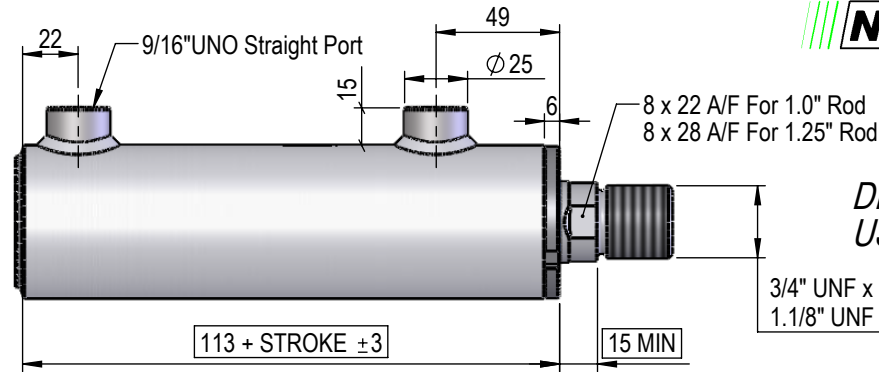
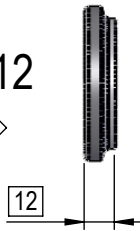
**C5**



# NI SERIES 2.0" BORE 1.0" OR 1.25" ROD CYLINDER

EP2012

P1



*DIMENSIONS IN BOXES TO BE  
USED FOR BUILD LENGTH*

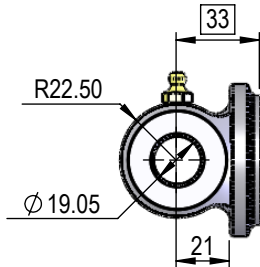
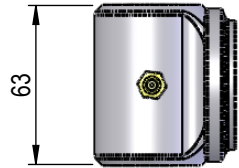
3/4" UNF x 20mm For 1.0" Rod  
1.1/8" UNF x 30mm For 1.25" Rod

## PIN-EYE

PBC200-07I63M

HS = 16459 kg

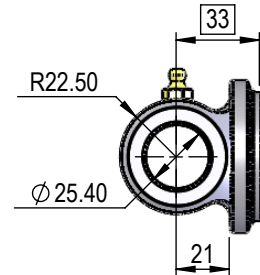
E1



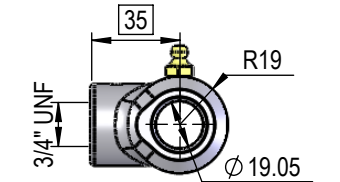
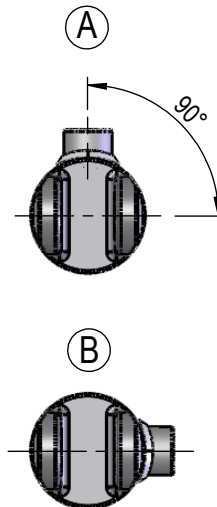
PBC200-10I63M

HS = 12368 kg

E2



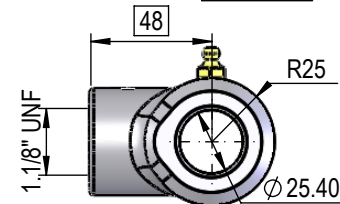
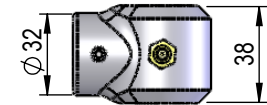
## PORT POSITION



EC07I38M07I

HS = 5913 kg

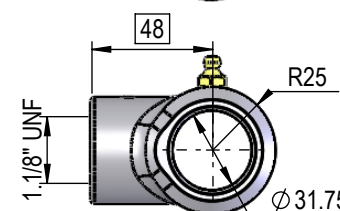
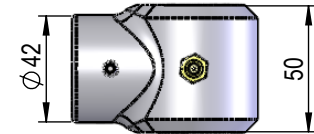
E1



EC10I50M11I

HS = 11369 kg

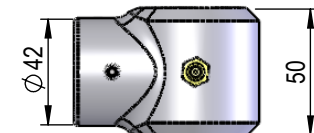
E2



EC12I50M11I

HS = 8274 kg

E3

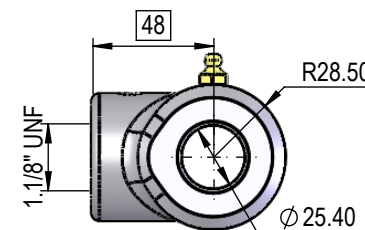
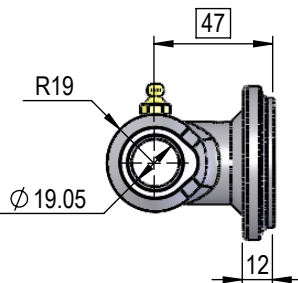
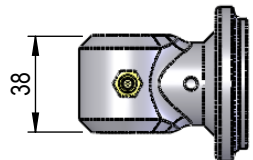


## MALE LUGS

EC07I38M07I + EP2012

HS = 5913 kg

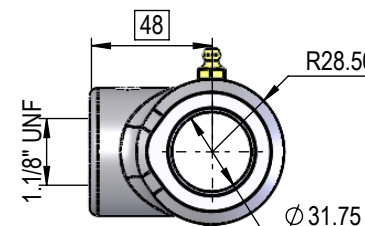
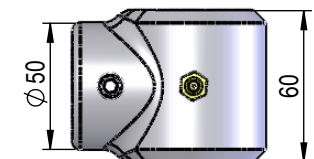
M1



EC10I60M11I

HS = 18337 kg

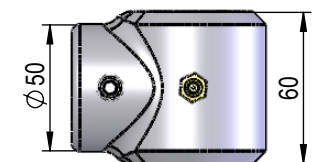
E4



EC12I60M11I

HS = 14706 kg

E5

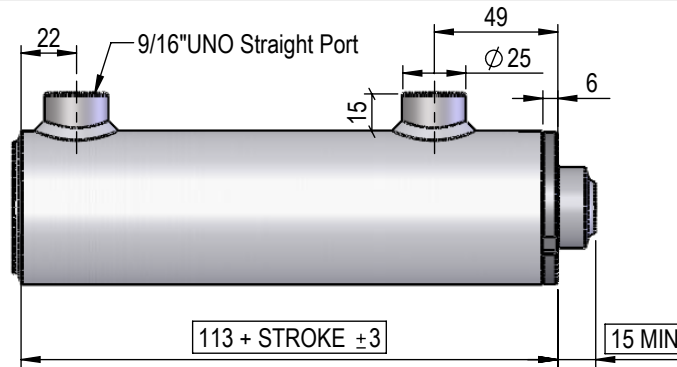
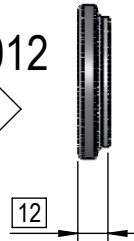


# NI SERIES 2.0" BORE 1.0" OR 1.25" ROD CYLINDER

## SPHERICAL BEARING

EP2012

P1



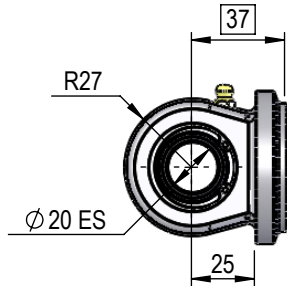
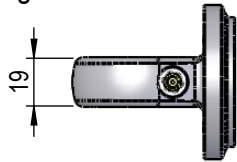
*DIMENSIONS IN BOXES TO BE  
USED FOR BUILD LENGTH*

## SPHERICAL BEARING

**SB200-20**

HS = 3917 kg

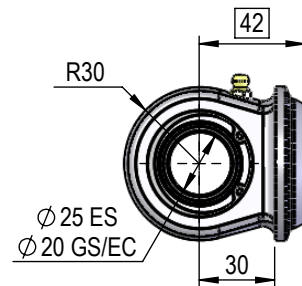
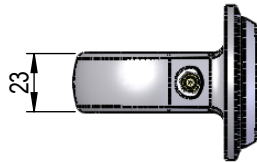
B1



**SB200-25**

HS = 4364 kg

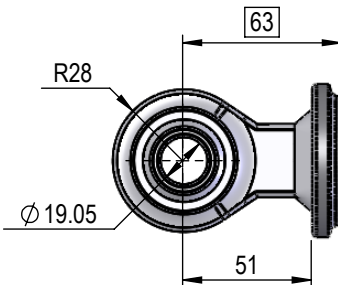
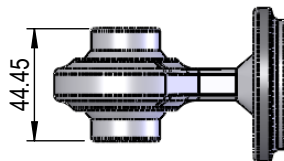
B2



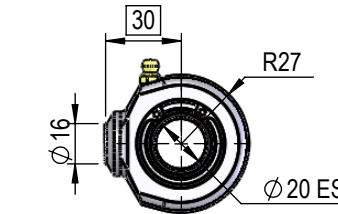
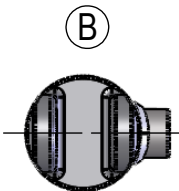
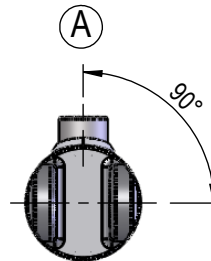
**CAT1( S310 )**

HS = 3746 kg

L1



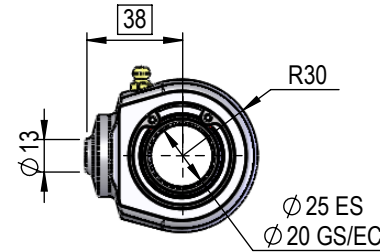
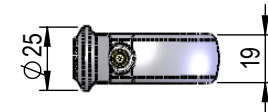
## PORT POSITION



**SBR20**

HS = 3921 kg

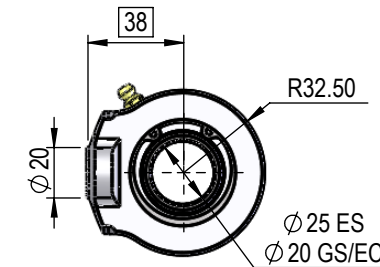
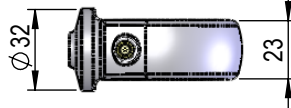
B1



**SBR25**

HS = 4364 kg

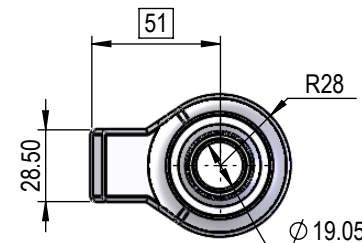
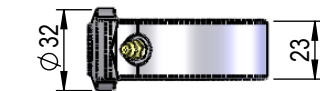
B2



**SBR25HD**

HS = 6171 kg

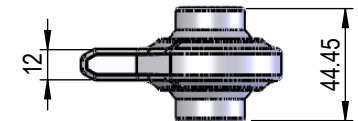
B3



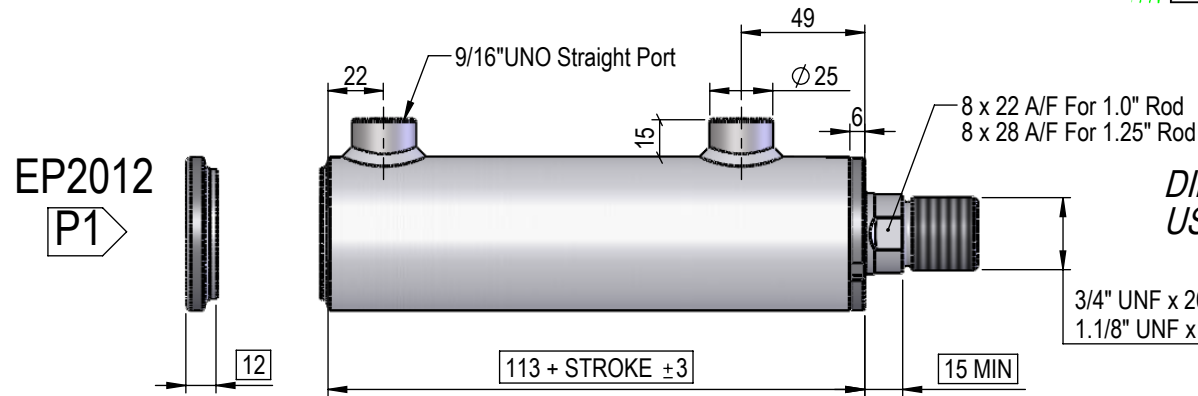
**CAT1( S310 )**

HS = 3746 kg

L1



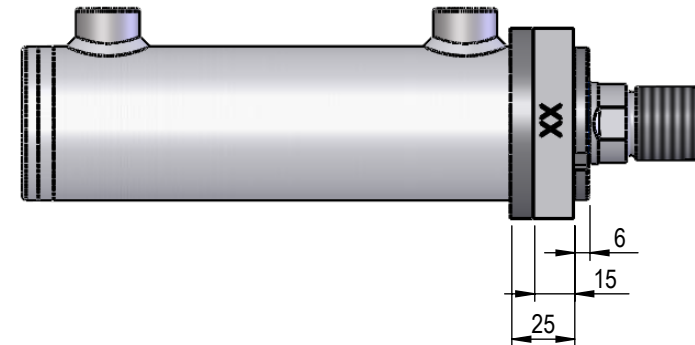
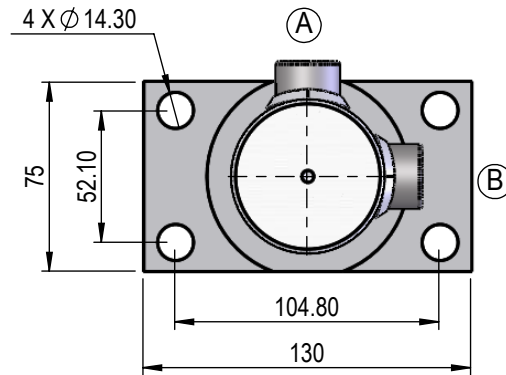
# NI SERIES 2.0" BORE 1.0" OR 1.25" ROD CYLINDER



## FLANGE MOUNT

FL20

F1



## TRUNION MOUNT

TR20

T1

