

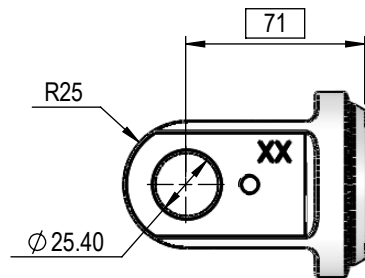
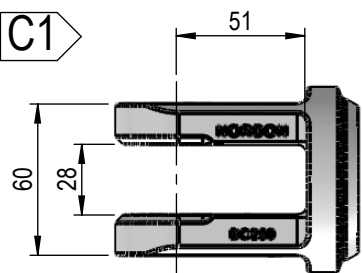
NI SERIES 2.5" BORE 1.25" OR 1.5" ROD CYLINDER

FEMALE CLEVIS

BC250

HS = 8753 kg

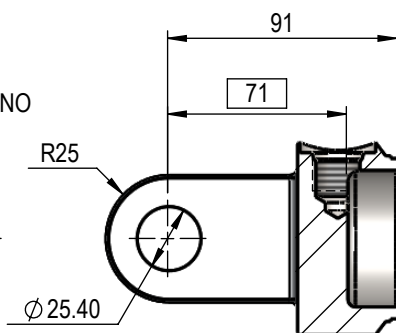
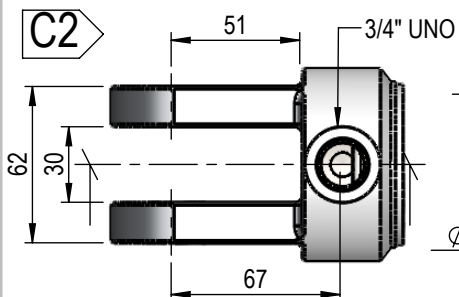
C1



BCP250

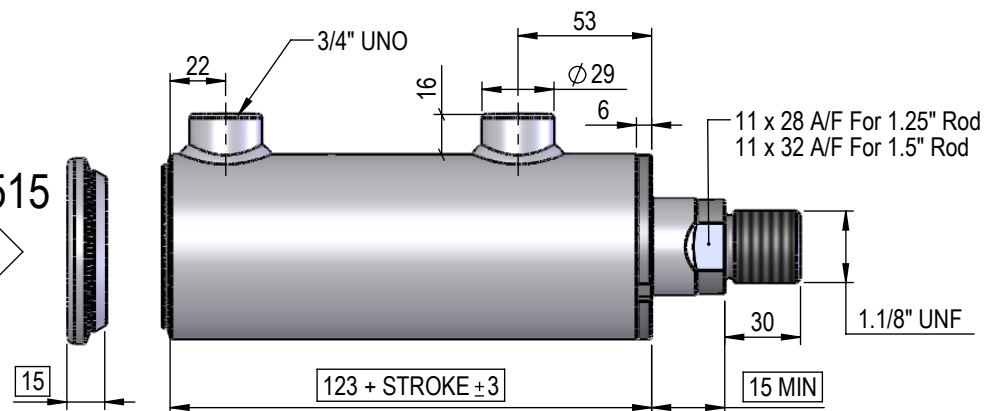
HS = 9341 kg

C2



EP2515

P1



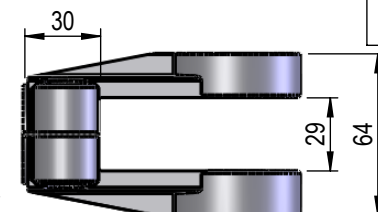
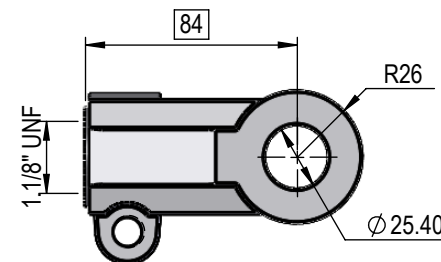
*DIMENSIONS IN BOXES TO BE
USED FOR BUILD LENGTH*

FEMALE CLEVIS

AC001

HS = 11036 kg

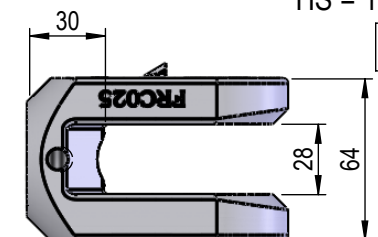
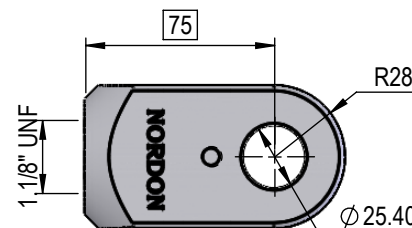
A1



FRC025

HS = 12939 kg

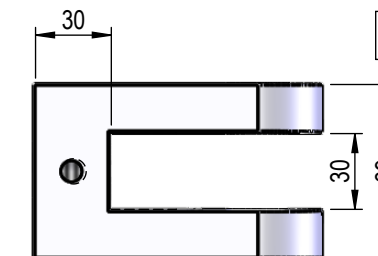
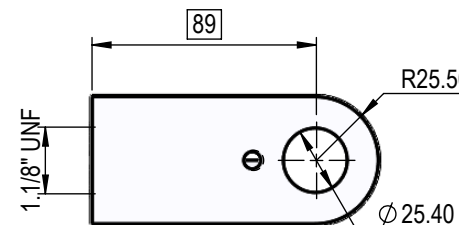
C1



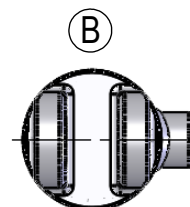
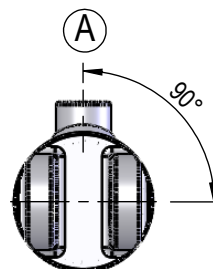
CL001

HS = 12463 kg

C2



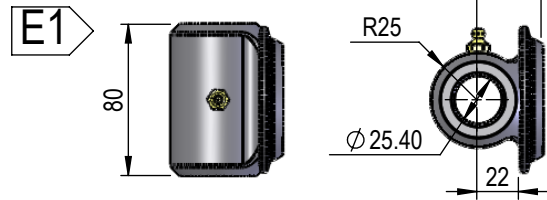
PORT POSITION



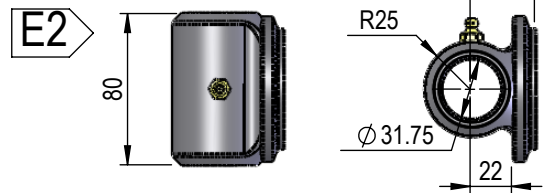
NI SERIES 2.5" BORE 1.25" OR 1.5" ROD CYLINDER

PIN-EYE

PBC250-10I80M
HS = 20122 kg



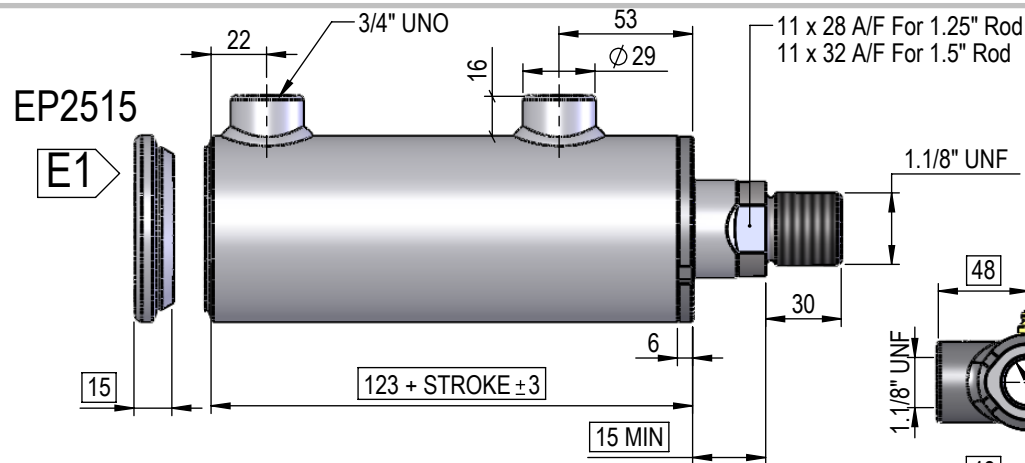
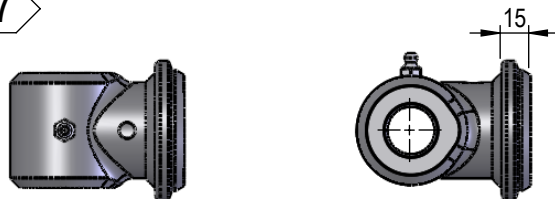
PBC250-12I80M
HS = 14747 kg



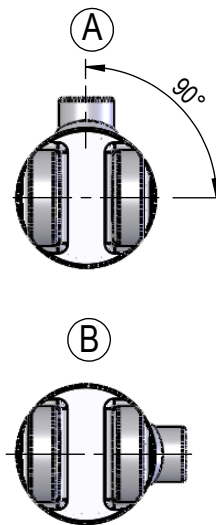
MALE LUG

Rod Pin Eye (E1-E7) + EP2515

M1-M7



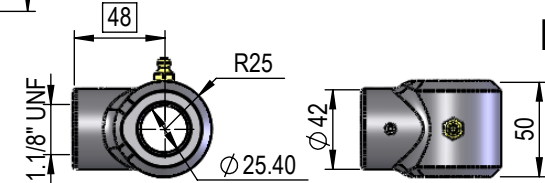
PORT POSITION



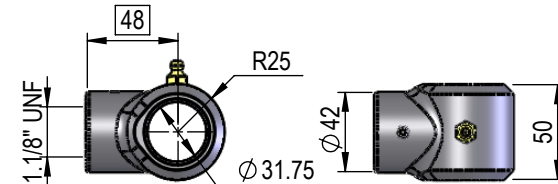
DIMENSIONS IN BOXES TO BE
USED FOR BUILD LENGTH

PIN-EYE

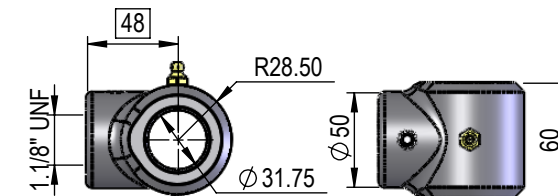
EC10I50M11I
HS = 11369 kg



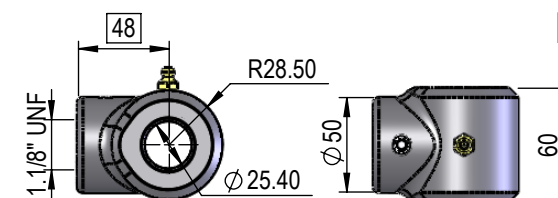
EC12I50M11I
HS = 8274 kg



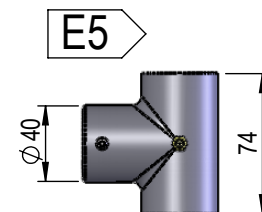
EC12I60M11I
HS = 14706 kg



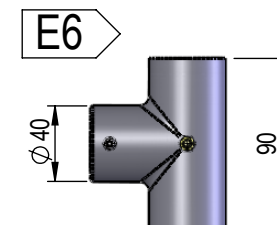
EC10I60M11I
HS = 18337 kg



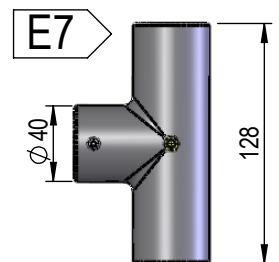
EC10I51M74M
HS = 11179 kg



EC10I51M90M
HS = 13958 kg



EC10I51M128M
HS = 20963 kg



NI SERIES 2.5" BORE 1.25" OR 1.5" ROD CYLINDER

DIMENSIONS IN BOXES TO BE
USED FOR BUILD LENGTH

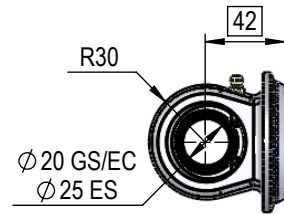
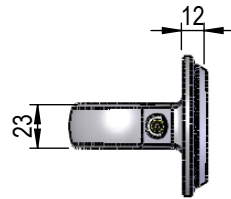
SPHERICAL BEARING

SPHERICAL BEARING

SB-250-25

HS = 4364 kg

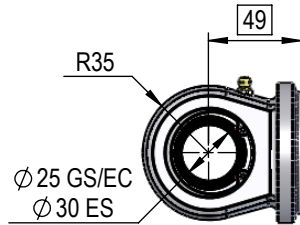
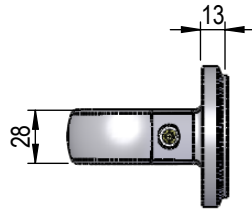
B1



SB-250-30

HS = 6874 kg

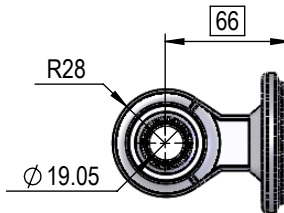
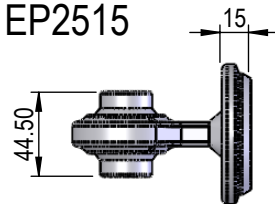
B2



CAT1(S310) + EP2515

HS = 3746 kg

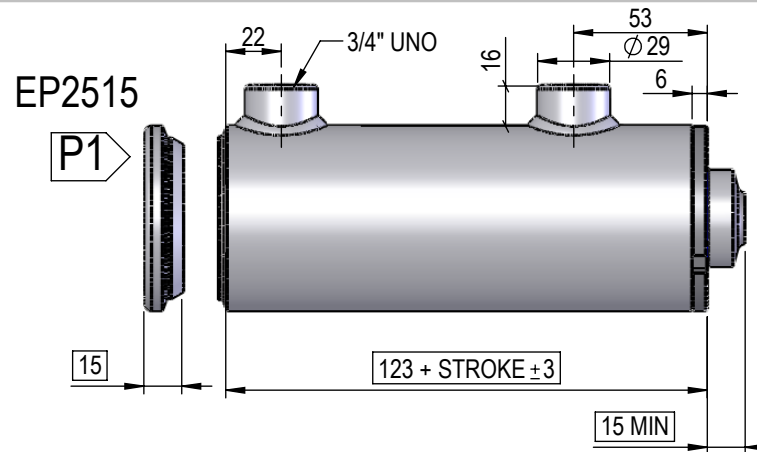
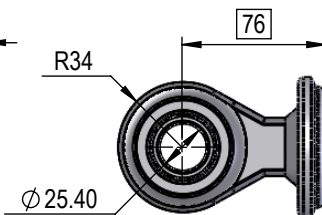
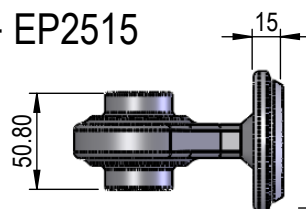
L1



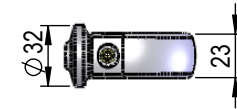
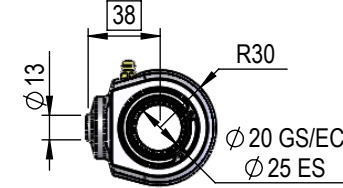
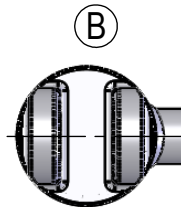
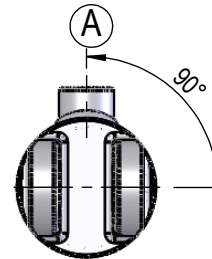
CAT2(S311) + EP2515

HS = 6041 kg

L2



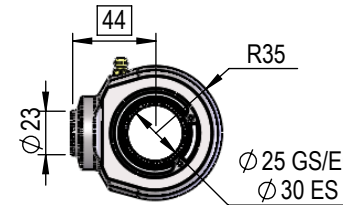
PORT POSITION



SBR25

HS = 4364 kg

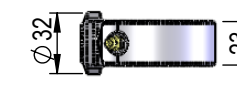
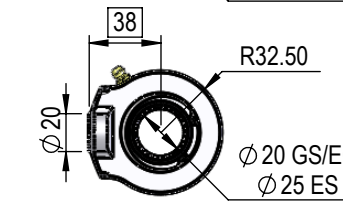
B1



SBR30

HS = 6875 kg

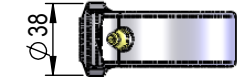
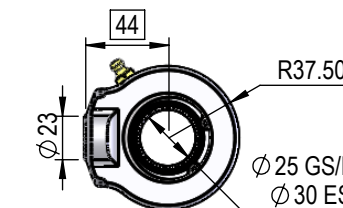
B2



SBR25HD

HS = 6171 kg

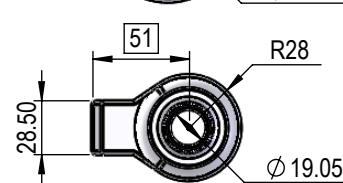
B3



SBR30HD

HS = 9173 kg

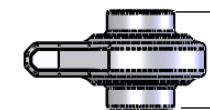
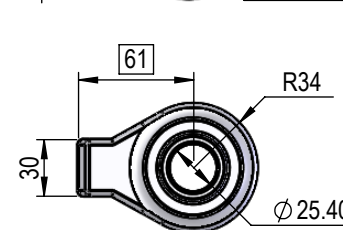
B4



CAT1(S310)

HS = 3746 kg

L1



CAT2(S311)

HS = 6041 kg

L2

NI SERIES

2.5" BORE

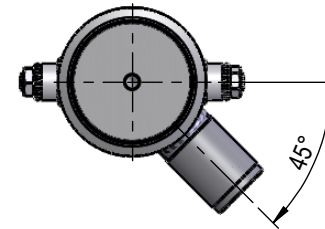
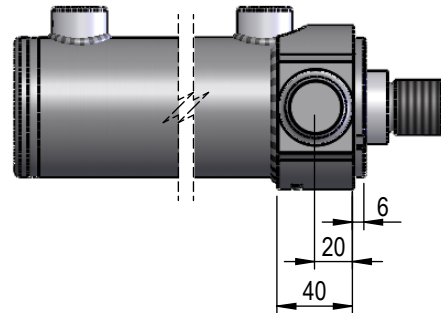
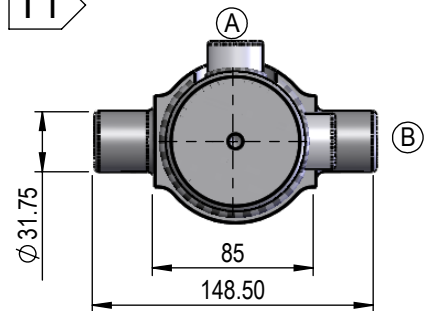
1.25" OR 1.5" ROD

CYLINDER

TRUNION MOUNT

TR25

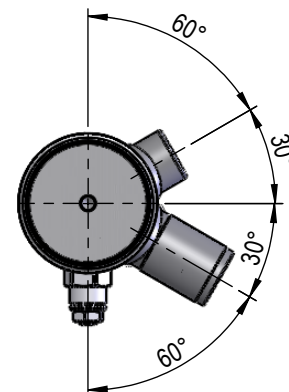
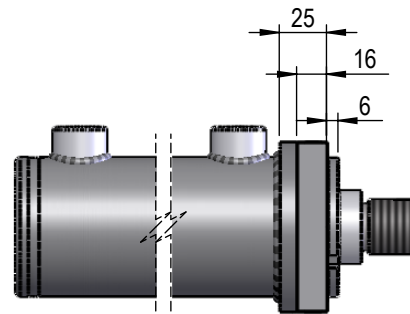
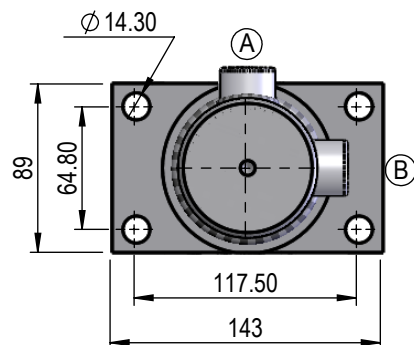
T1



FLANGE MOUNT

NFPA25

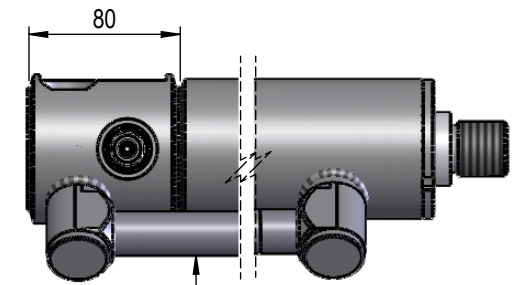
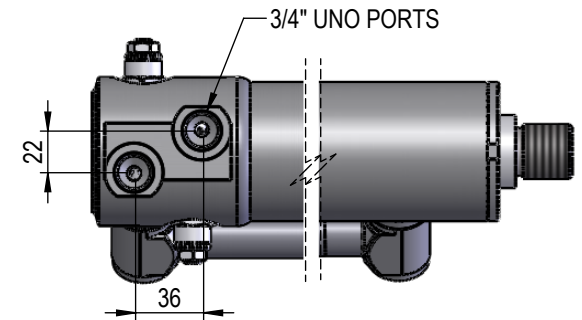
F1



INTERNAL VALVE OPTIONS

Double Counterbalance Valve

Valve cavity Sun T11A
60Lt Pilot operated check valves
Or
60Lt Counterbalance Valves



Transfer tube can be welded or use fittings

Single Counterbalance Valve

Valve cavity Sun T11A
60Lt Pilot operated check valve
Or
60Lt Counterbalance Valve
Base side holding

