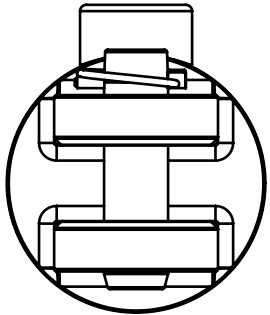
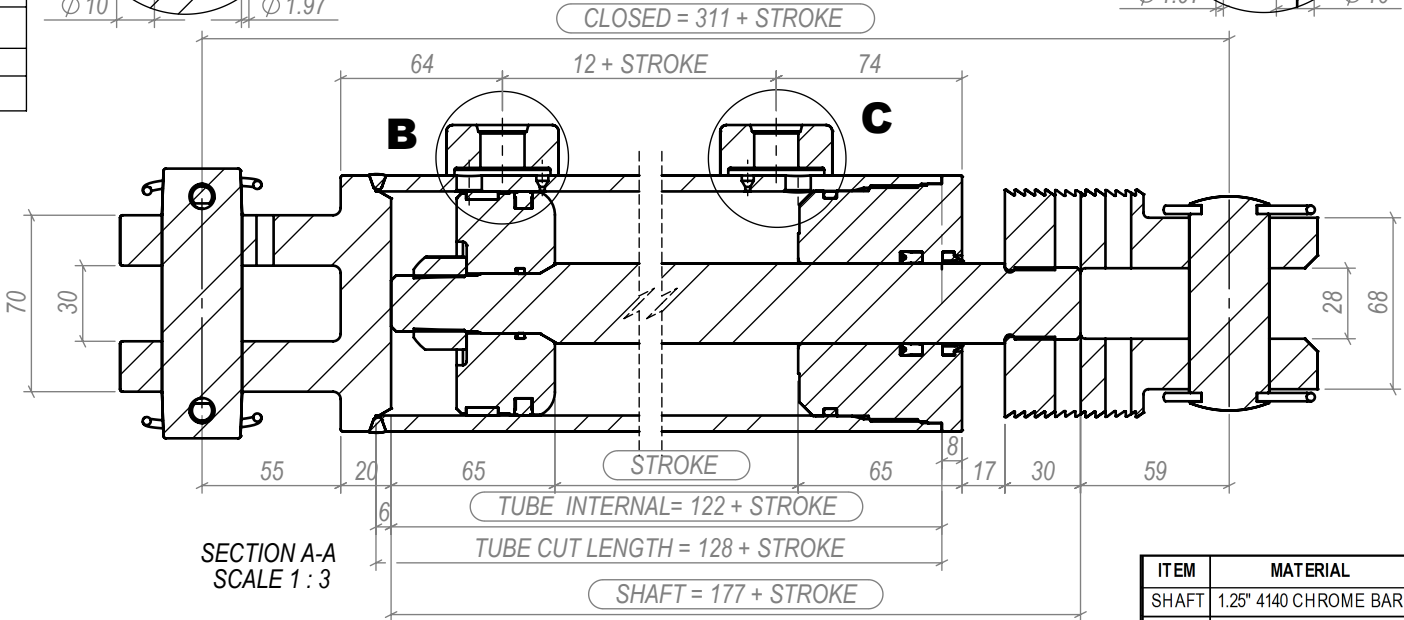
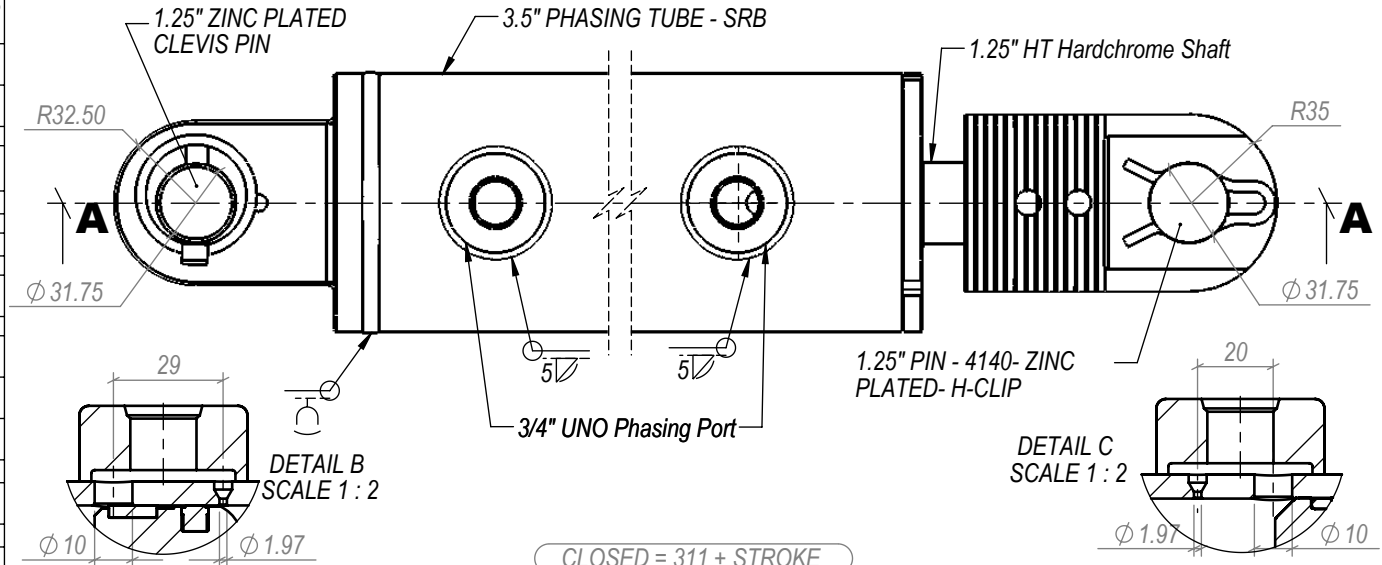


ITEM NO.	PART NUMBER	NAME	NAP35 B_C12 /QTY.
1	7-8-UNF-CONLOCK-NUT	7/8" UNF HEX CONE LOCK NUT GRADE C	1
2	PP35	3.172" x 0.875" SPIGOT PP PISTON	1
3	8911000	3.5" 755 Piston Seal	1
4	F30083	Type 533 Hallite Bearing 3.5 X 3.25 X 0.5	1
5	01-119	3/32" Section O-ring 13/16" ID	1
6	GN3512	3.5" Gland to suit 1.75" Rod	1
7	4410600	Type 620 Hallite Rod Seal 1.25"	1
8	8880910	TYPE 520 WIPER - 1.1/4" ID	1
9	01-236+02-236	O-RING + BACKUP 1/8" SECTION 3 1/2" OD 70-DURO	1
10	M10x16	M10X16 Grub Screw	1
11	HAIR-PIN-1.25	EXTERNAL CLEVIS (HAIR) PIN TO SUIT 1.25" PIN	2
12	1.25-PIN-DS-H-CLIP-1.25	1.25" PIN - 4140- ZINC PLATED- H-CLIP	1
13	BC350B	3.5" Female Base Clevis to suit 1.25" Pin	1
14	Linch-pin	LINCH PIN TO SUIT 1.25" PIN	2
15	CLR-DS-12I-11I	FEMALE ROD CLEVIS SUIT 1.25" PIN 1.125" UNE THREAD	1
16	8UNOPH	3/4" UNO Phasing Port	2
17	1.25PIN	1.25" ZINC PLATED CLEVIS PIN	1
18	PT35-0.25-10-37-57-00-0331-11	3.5" PHASING TUBE - SRB	1
19	SN12I-59M-08I-30M-11I(01X)0380	1.25" HT Hardchrome Shaft	1



PORTS IN 'A' POSITION



SECTION A-A SCALE 1 : 3

ITEM	MATERIAL
SHAFT	1.25" 4140 CHROME BAR
TUBE	3.5" BORE, 1/4" WALL-SRB

NOTE: ONLY TOLERANCED DIMENSIONS ARE CRITICAL.  
 ALL THREADS MACHINED TO 2A/B SPECIFICATION.  
 ALL PIN HOLES MACHINED TO D9 TOLERANCE.  
 ALL MACHINED SURFACE FINISHES TO BE 3.2um Ra.  
 ALLOWABLE CASTING TOLERANCE ±0.5mm

REV.	DATE	AMENDMENT DESCRIPTION	BY

Customer: \_\_\_\_\_



Name <b>3.5" BORE " STROKE 1.25" ROD PHASING CYLINDER, 1.25" PINS</b>		Part No. <b>NAP35B_C12</b>
DRAWN: S. TEED	DATE: 20.06.12	Drawing No. <b>NAP35B_C12</b>
CHECKED:		SCALE: 1:3 SH: 1 of 1 A4