

NU SERIES

HYDRAULIC CYLINDER

NORDON CYLINDERS
AUSTRALIA

KEY FEATURES & BENEFITS



THE IDEAL SOLUTION FOR DEMANDING HYDRAULIC SOLUTIONS

Universal Application

The perfect multi-purpose cylinder, ideal for use in industrial, mining, construction, oil & gas, transport, and agriculture, is also adaptable to a wide range of machinery and equipment, offering the flexibility needed for diverse applications.



Optimised A & B Ports

Designed for maximum fluid control and precise operation, ensuring high efficiency and minimal downtime in critical environments, with an exceptional port configuration that allows easy integration and compatibility with your system.



Durable, Superior Quality Hallite Seals

Manufactured with Hallite seals that withstand extreme conditions and harsh environments, ensuring long-lasting performance, reducing maintenance costs by preventing leaks, and maintaining tight operation.



Extended Manufacturer's Warranty

5-year manufacturer's warranty, offering confidence in the durability and reliability of our product while reducing operational risk and providing peace of mind with coverage for years to come.



Fast Delivery

In-stock availability ensures you don't have to wait, with our cylinders readily available for quick delivery anywhere in Australia, helping you keep your projects on schedule with fast, reliable access to the parts you need.

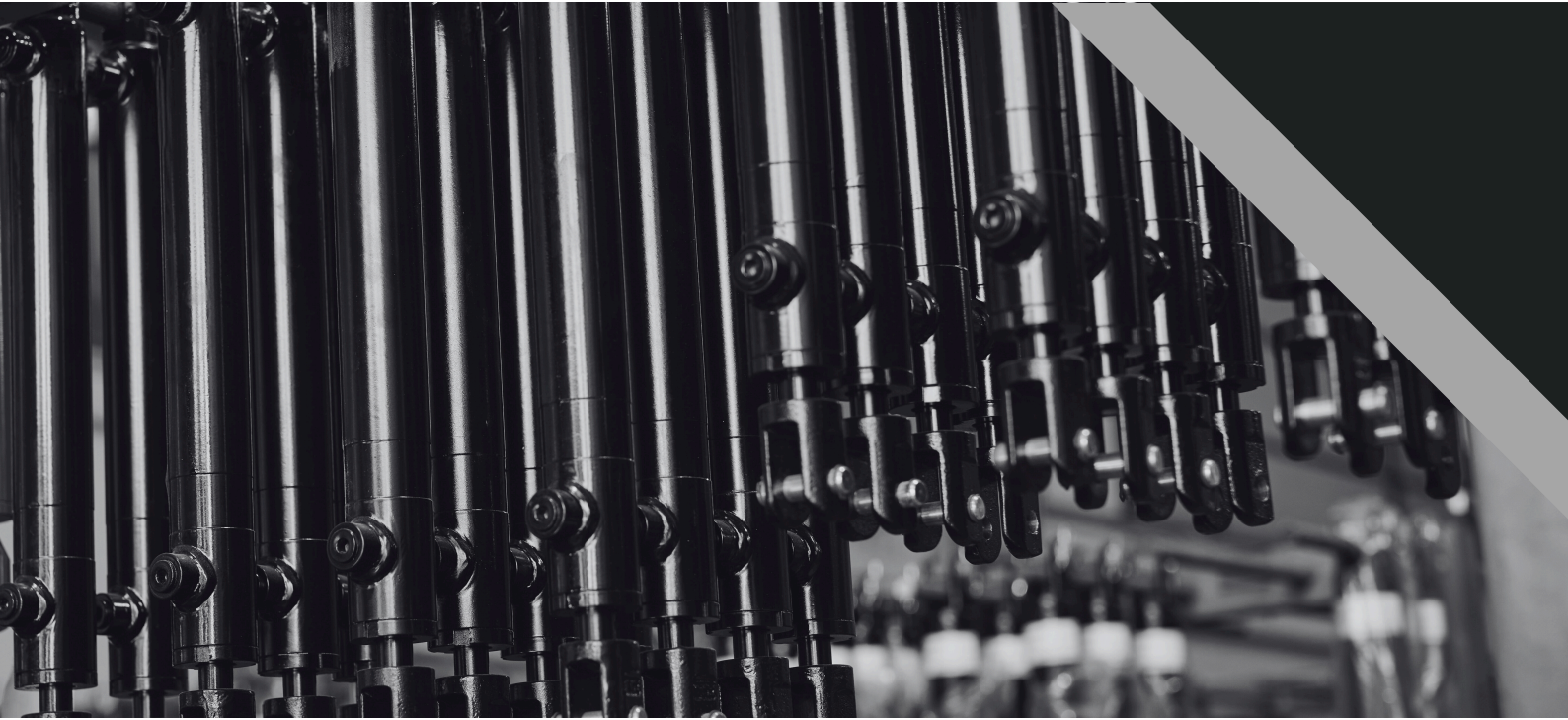


Support and Sales

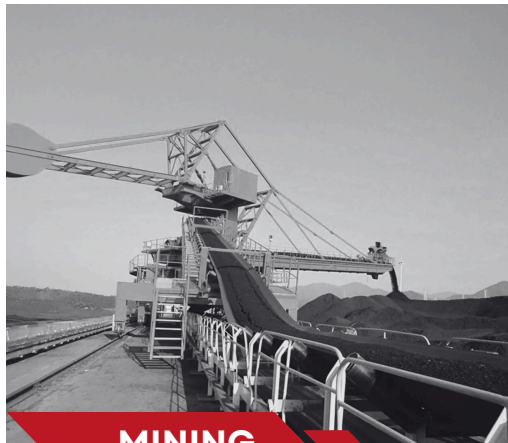
Our sales and technical teams provide expert guidance, answering questions and ensuring you get the right product, while offering dedicated support for installation, troubleshooting, and ongoing service.



SUITABLE FOR VARIOUS
INDUSTRIES



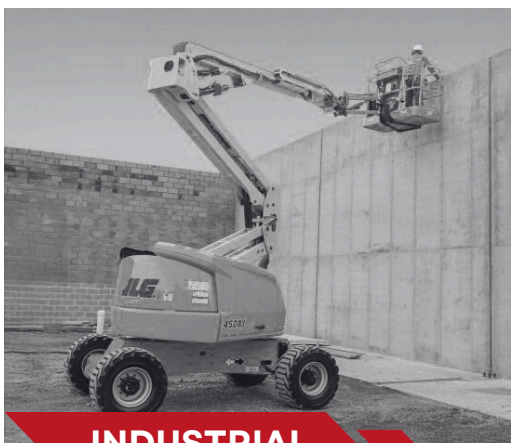
AGRICULTURE



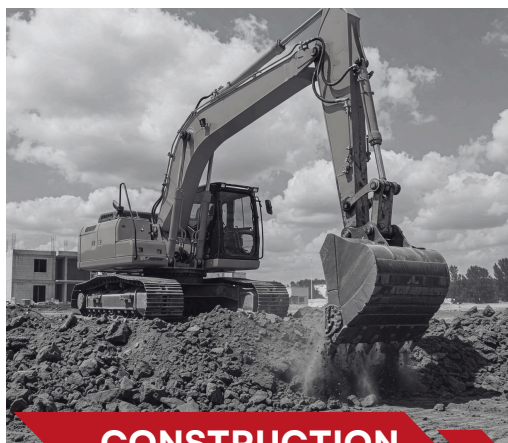
MINING



TRANSPORT



INDUSTRIAL



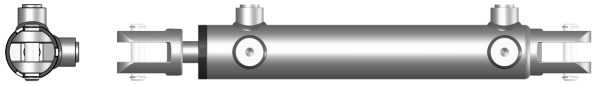
CONSTRUCTION



OIL & GAS

CYLINDER DIMENSIONS

1.5 inch



Bore: 1 1/2"
Stroke: 2" - 24"
Rod Diameter: 0.75"
Closed Centre: 235 - 794mm
Pin Dia./Length: 0.5" - 50mm

2 inch



Bore: 2"
Stroke: 4" - 48"
Rod Diameter: 1" - 1.25"
Closed Centre: 343 - 1530mm
Pin Dia./Length: 1.0" - 54mm

2.5 inch



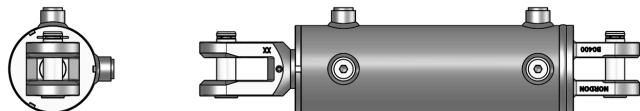
Bore: 2 1/2"
Stroke: 4" - 48"
Rod Diameter: 1.25"-1.5"
Closed Centre: 413 - 1530mm
Pin Dia./Length: 1.0" - 63mm

3 inch



Bore: 3"
Stroke: 4" - 48"
Rod Diameter: 1 5"
Closed Centre: 413 - 1530mm
Pin Dia./Length: 1.0" - 63mm

4 inch



Bore: 4"
Stroke: 8" - 36"
Rod Diameter: 2"
Closed Centre: 514 - 1225mm
Pin Dia./Length: 1.0" - 75mm



Contact us for more information

 : (07) 3889 6522

 : sales@nordoncyll.com.au

nordoncyll.com.au