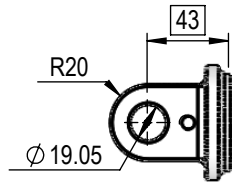
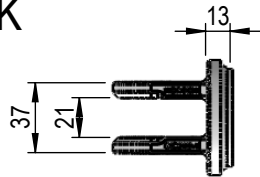


NI SERIES 2.0" BORE 1.0" OR 1.25" ROD CYLINDER

FEMALE CLEVIS

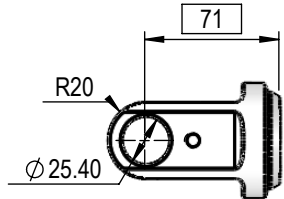
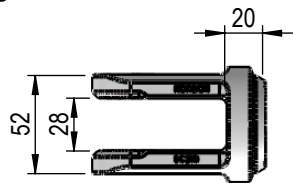
BC200-K

C1



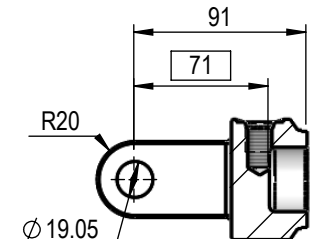
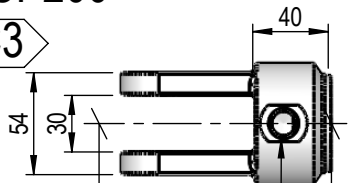
BC200

C2



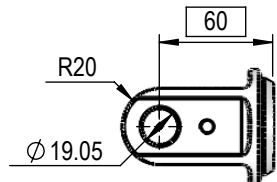
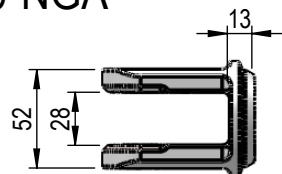
BCP200

C3



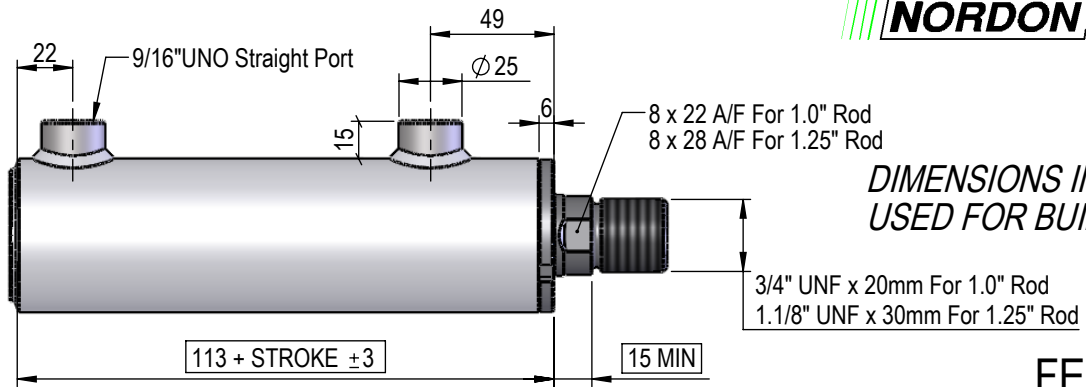
BC200-NGA

C4



EP2012

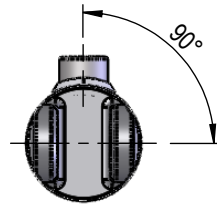
P1



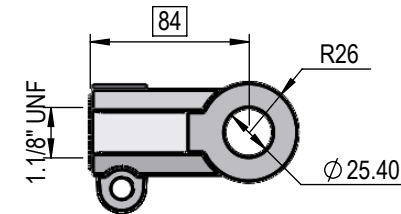
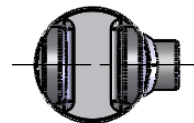
DIMENSIONS IN BOXES TO BE USED FOR BUILD LENGTH

PORT POSITION

A

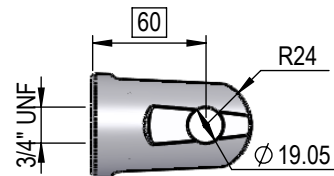


B



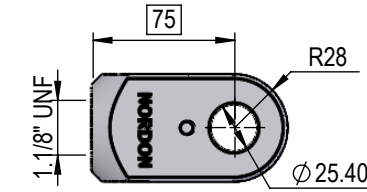
AC001

A1



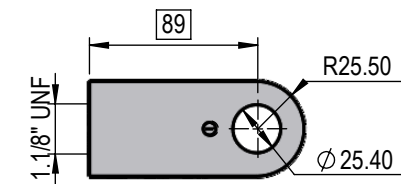
CLR000

C2



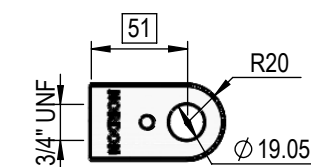
FRC025

C3



CL001

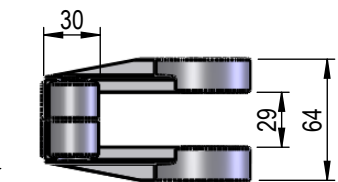
C4



FRC020

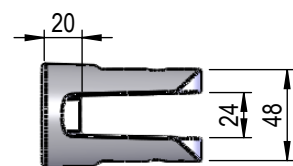
C5

FEMALE CLEVIS



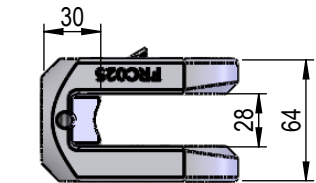
AC001

A1



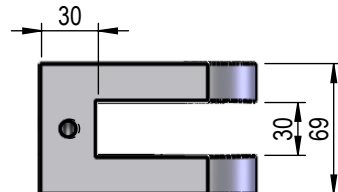
CLR000

C2



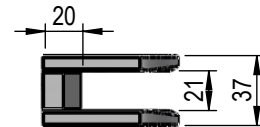
FRC025

C3



CL001

C4



FRC020

C5

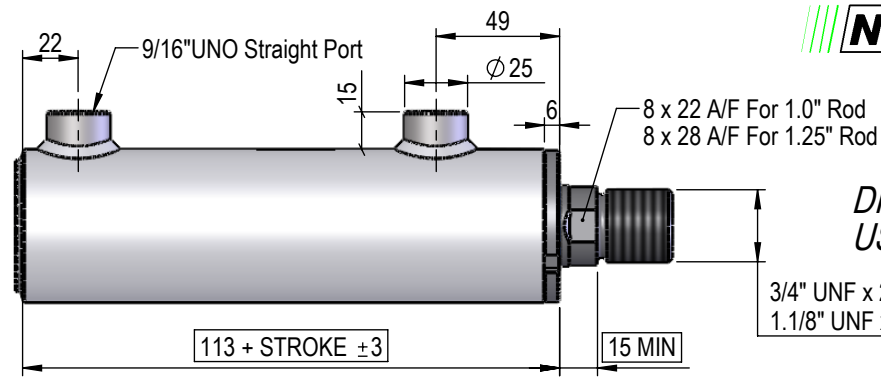
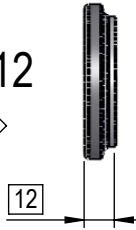
NI SERIES

2.0" BORE

1.0" OR 1.25" ROD

CYLINDER

EP2012
P1



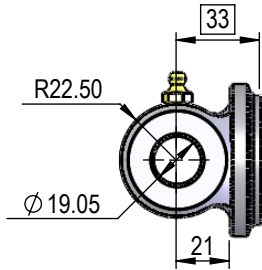
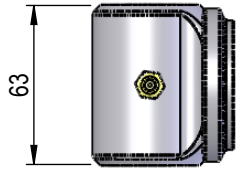
DIMENSIONS IN BOXES TO BE USED FOR BUILD LENGTH

3/4" UNF x 20mm For 1.0" Rod
1.1/8" UNF x 30mm For 1.25" Rod

PIN-EYE

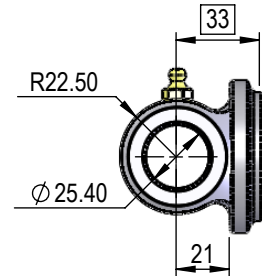
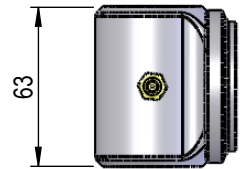
PBC200-07I63M

E1

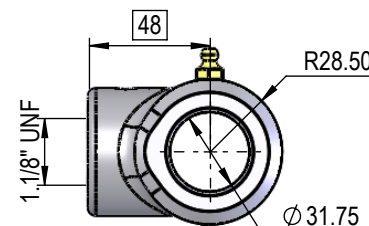
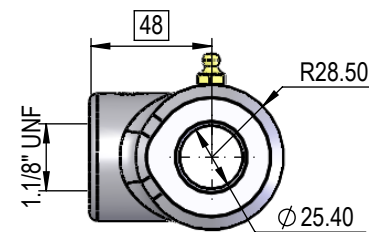
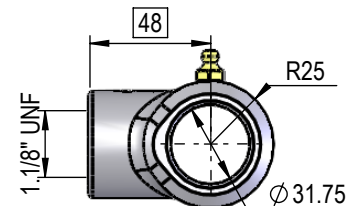
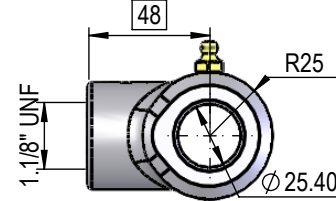
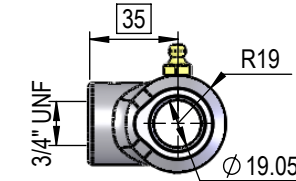
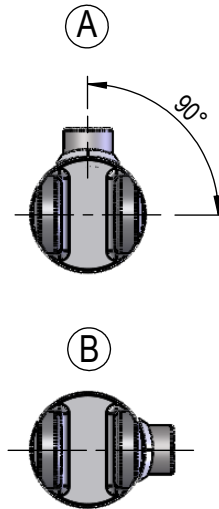


PBC200-10I63M

E2



PORT POSITION



PIN-EYE

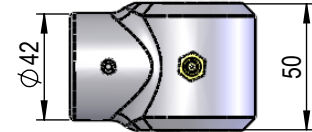
EC07I38M07I

E1



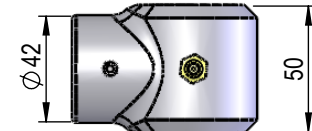
EC10I50M11I

E2



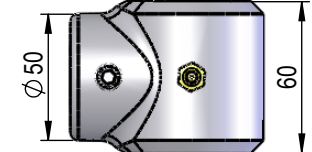
EC12I50M11I

E3



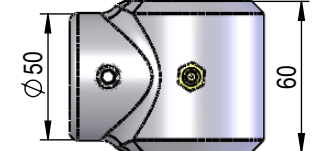
EC10I60M11I

E4



EC12I60M11I

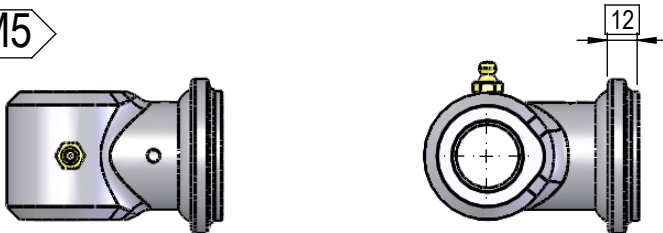
E5



MALE LUGS

Rod Pin Eye(E1-E5) + EP2012

M1 - M5



NI SERIES

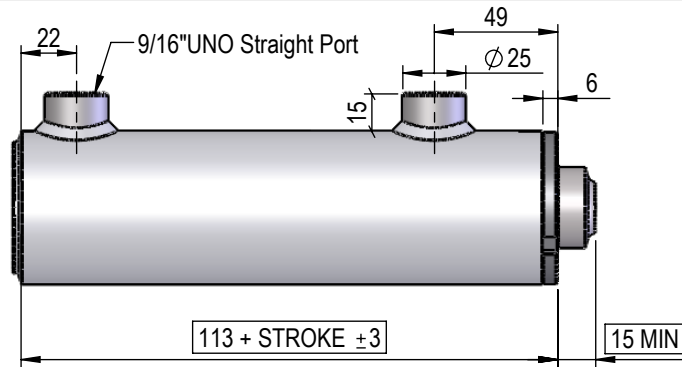
2.0" BORE

1.0" OR 1.25" ROD

CYLINDER

SPHERICAL BEARING

EP2012
P1

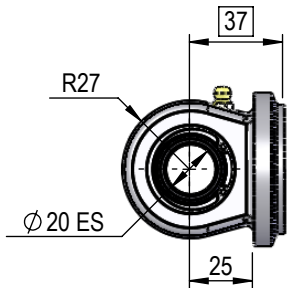
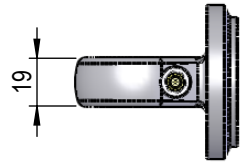


DIMENSIONS IN BOXES TO BE
USED FOR BUILD LENGTH

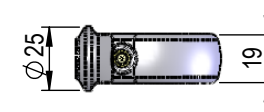
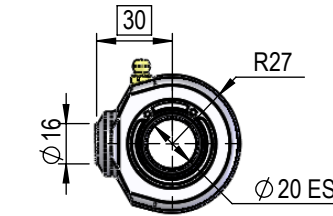
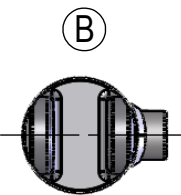
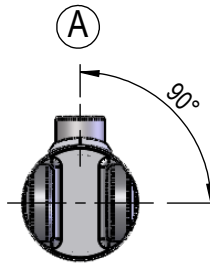
SPHERICAL BEARING

SB200-20

B1



PORT POSITION

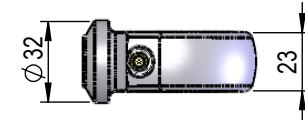
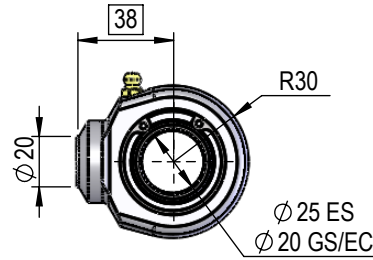
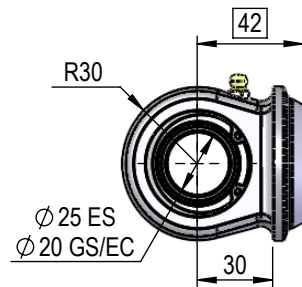
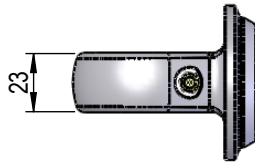


SBR20HD

B1

SB200-25

B2

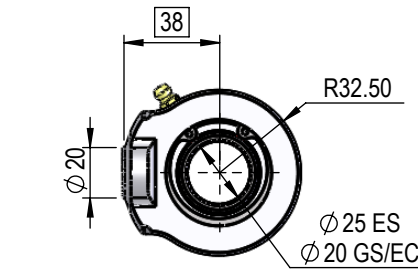
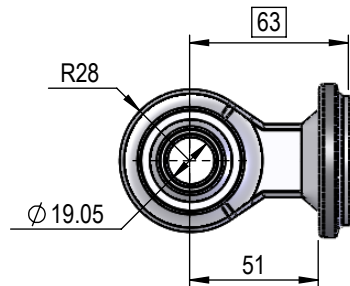
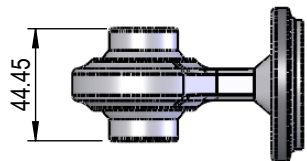


SBR25

B2

CAT1(S310)

L1



SBR25HD

B3

CAT1(S310)

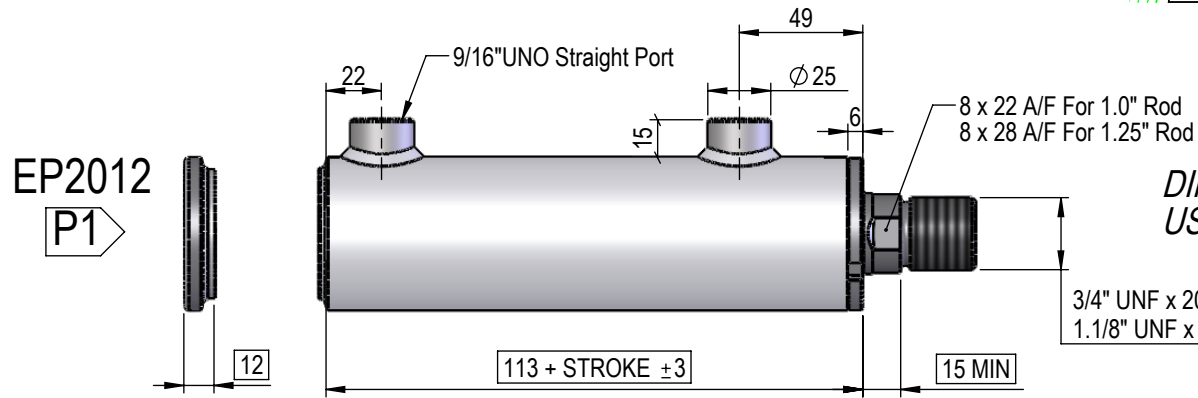


NI SERIES

2.0" BORE

1.0" OR 1.25" ROD

CYLINDER

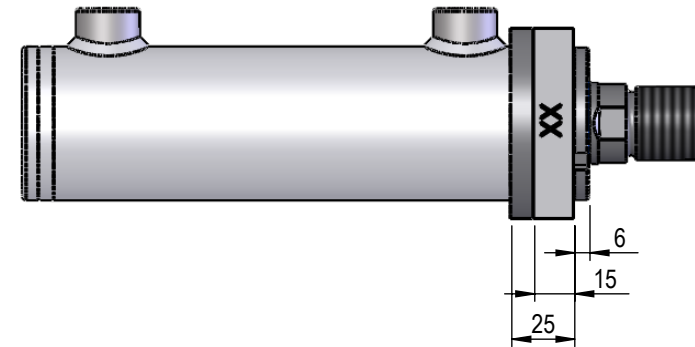
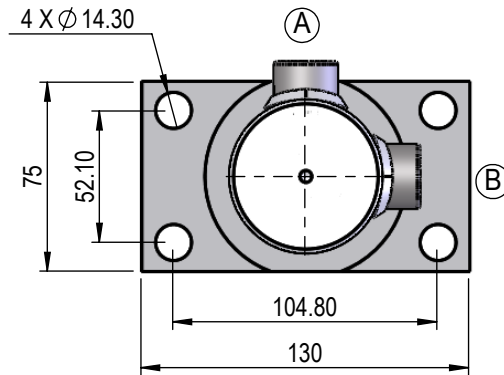


DIMENSIONS IN BOXES TO BE USED FOR BUILD LENGTH

3/4" UNF x 20mm For 1.0" Rod
1.1/8" UNF x 30mm For 1.25" Rod

FLANGE MOUNT

FL20
F1



TRUNION MOUNT

TR20
T1

