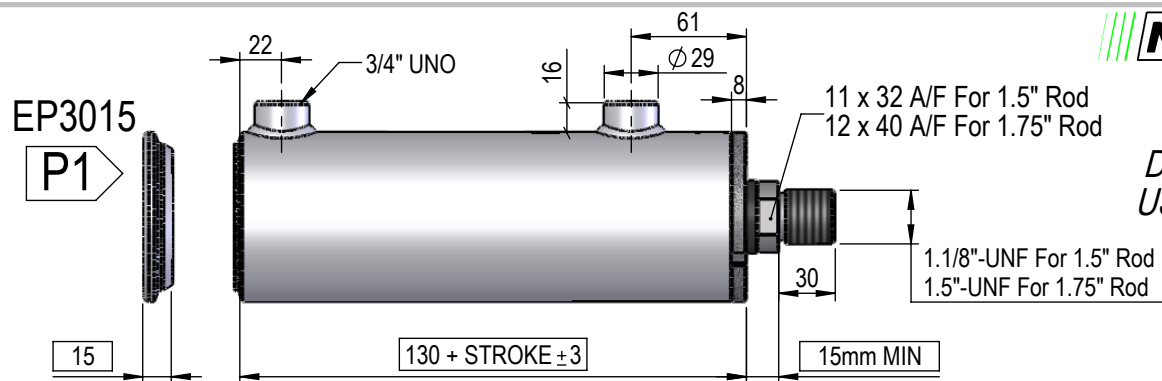


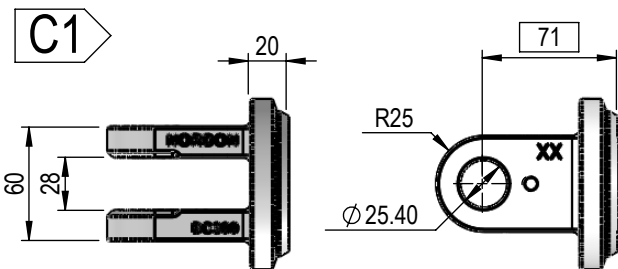
NI SERIES **3.0" BORE** **1.5" OR 1.75" ROD** **CYLINDER**



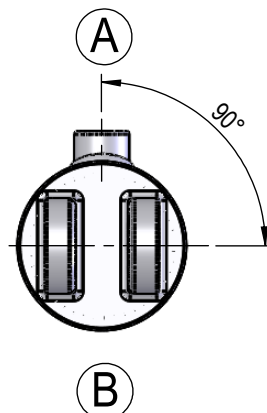
*DIMENSIONS IN BOXES TO BE
USED FOR BUILD LENGTH*

FEMALE CLEVIS

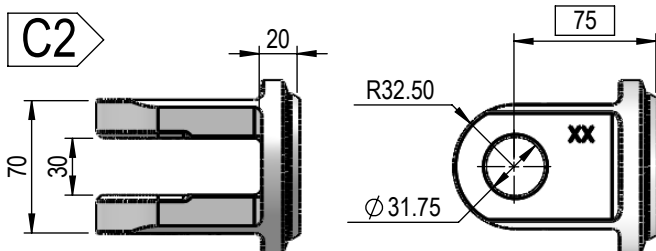
BC300
HS = 9112 kg



PORT POSITION

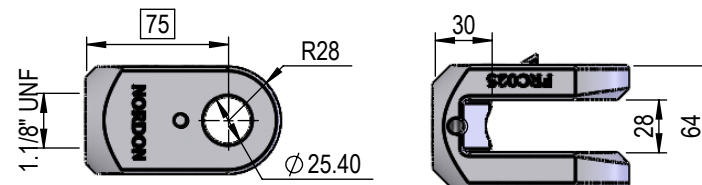


BC300B
HS = 15234 kg

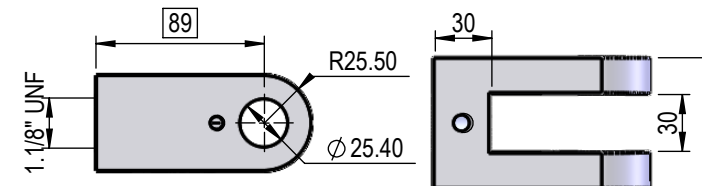


FEMALE CLEVIS

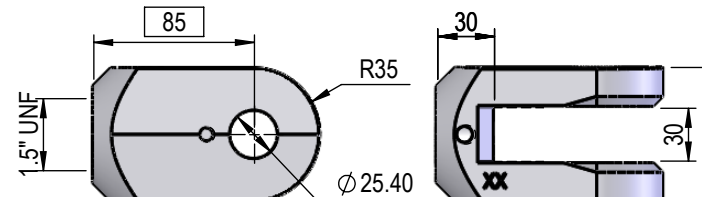
FRC025
HS = 12939 kg



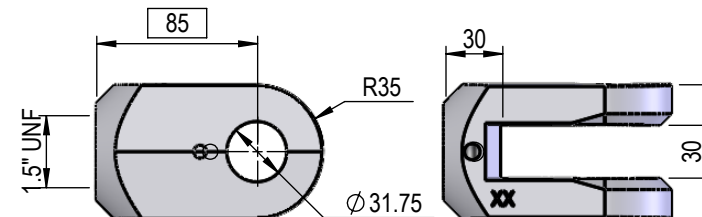
CL001
HS = 12463 kg



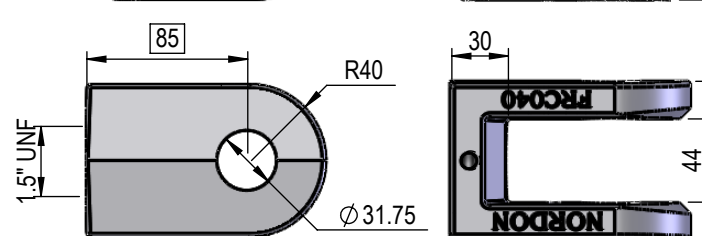
CL002
HS = 21216 kg



CL002B
HS = 18029 kg



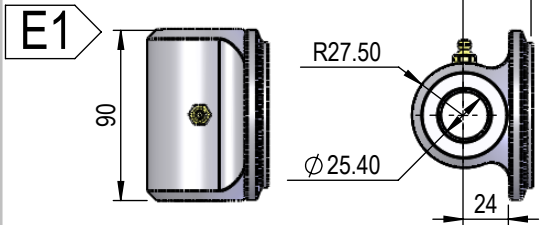
FRC040
HS = 20741 kg



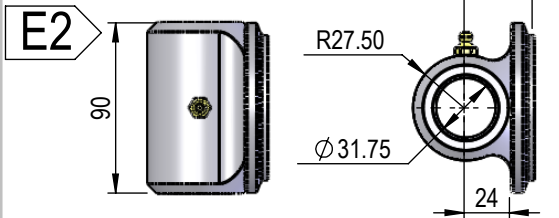
NI SERIES 3.0" BORE 1.5" OR 1.75" ROD CYLINDER

PIN-EYE

PBC300-10I90M
HS = 27916 kg

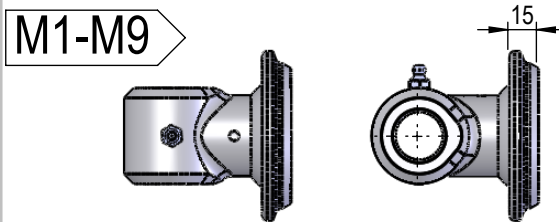


PBC300-12I90M
HS = 21784 kg



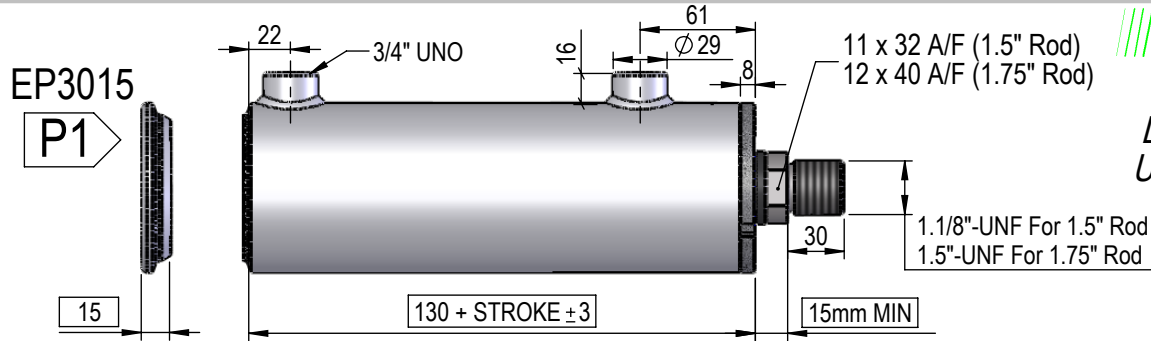
MALE LUG

Rod Pin Eye (E1-E9) + EP3015



HS = Housing Strength With F.O.S of 3:1

PORT POSITION



NORDON CYLINDERS
Australia

DIMENSIONS IN BOXES TO BE
USED FOR BUILD LENGTH

PIN-EYE

E1 	EC10I50M11I HS = 11369 kg 	E2 	EC12I50M11I HS = 8274 kg
E3 	EC12I60M11I HS = 14706 kg 	E4 	EC15I80M15I HS = 19569 kg
E5 	EC10I60M11I HS = 18337 kg 	E6 	EC12I60M15I HS = 17744 kg
E7 	EC10I51M74M HS = 11179 kg 	E8 	EC10I51M90M HS = 13958 kg
		E9 	EC10I51M128M HS = 20963 kg

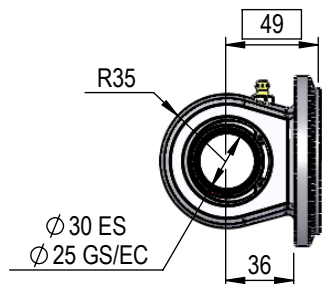
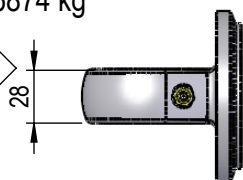
NI SERIES 3.0" BORE 1.5" OR 1.75" ROD CYLINDER

SPHERICAL BEARING

SB-300-30

HS = 6874 kg

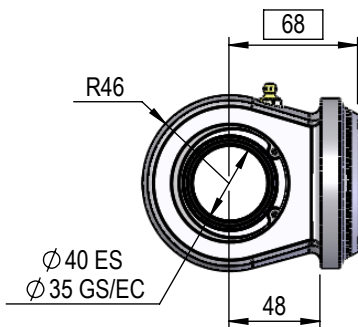
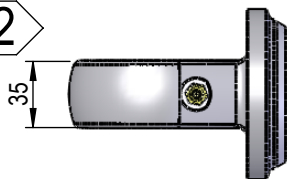
B1



SB-300-40

HS = 11352 kg

B2

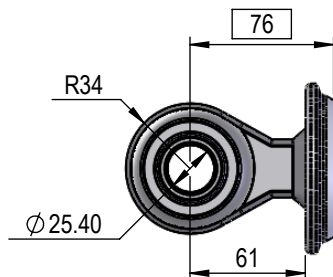
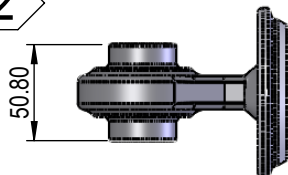


TOP LINK

CAT2(S311) + EP3015

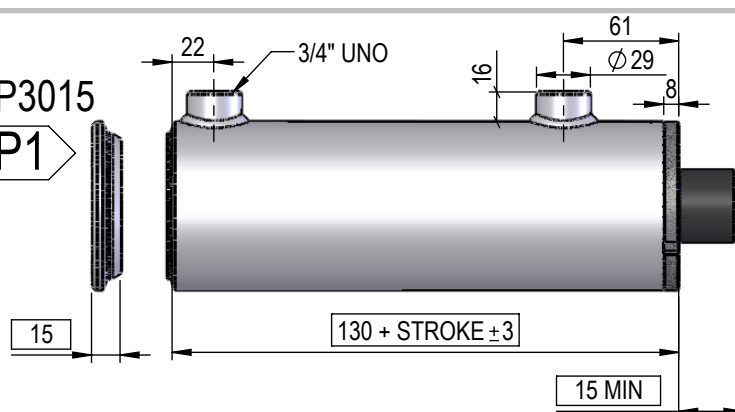
HS = 6041 kg

L2

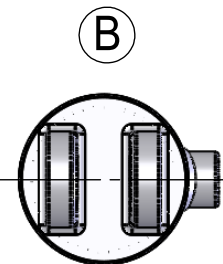
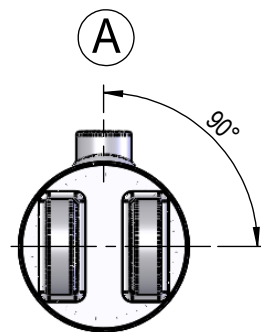


EP3015

P1



PORT POSITION



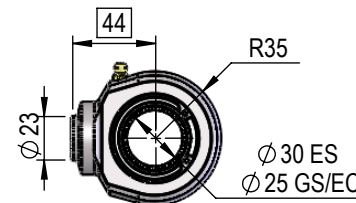
DIMENSIONS IN BOXES TO BE
USED FOR BUILD LENGTH

SPHERICAL BEARING

SBR30

HS = 6875 kg

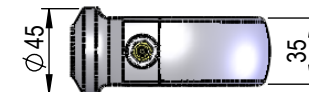
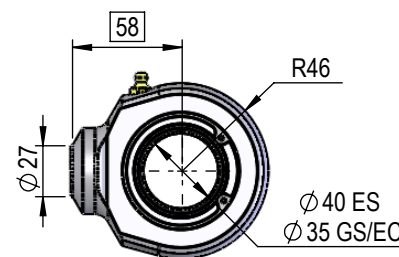
B1



SBR40

HS = 11356 kg

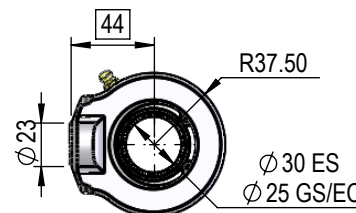
B2



SBR30HD

HS = 9173 kg

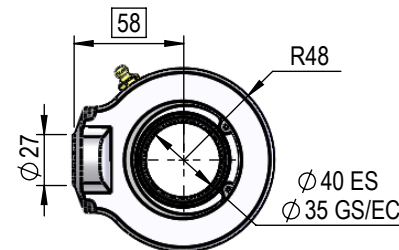
B3



SBR40HD

HS = 13958 kg

B4

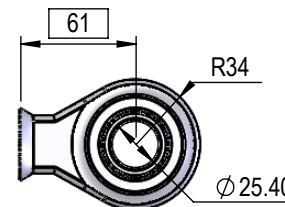


TOP LINK

CAT2 (S311)

HS = 6041 kg

L2

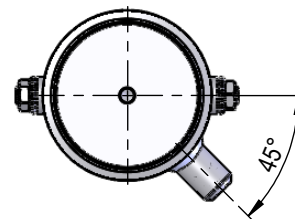
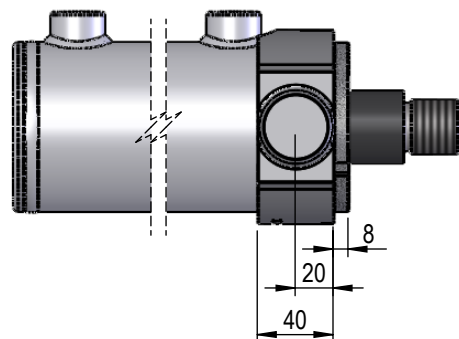
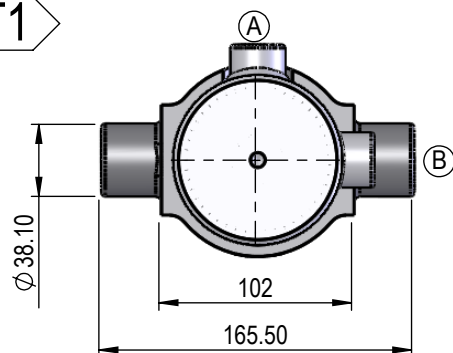


NI SERIES 3.0" BORE 1.5" OR 1.75" ROD CYLINDER

TRUNION MOUNT

TR30

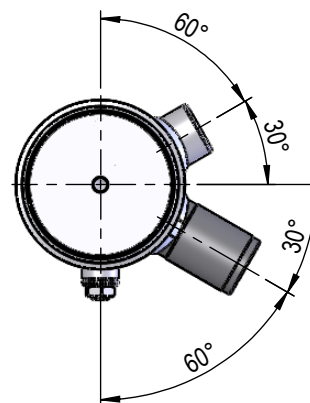
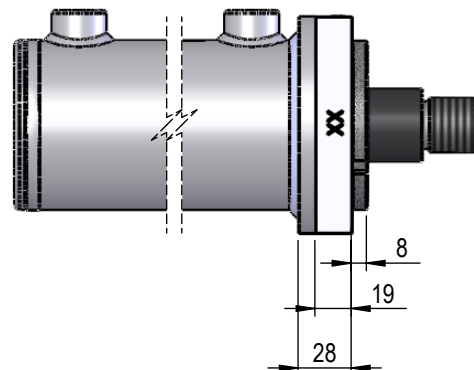
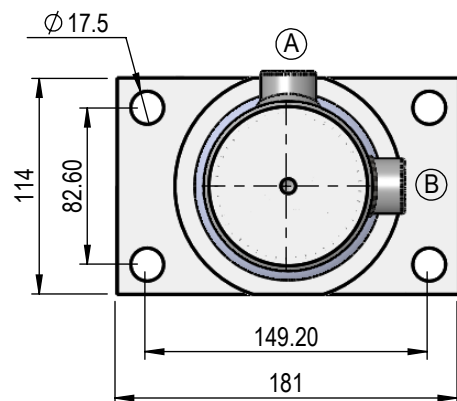
T1



FLANGE MOUNT

FL30

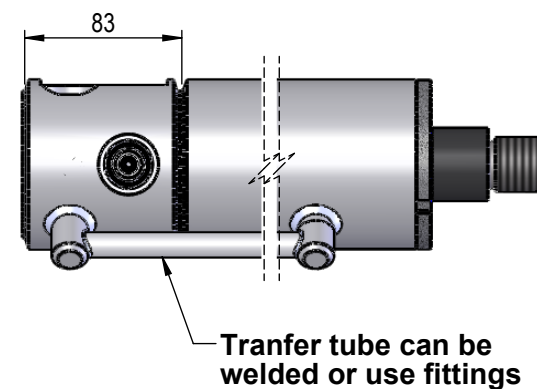
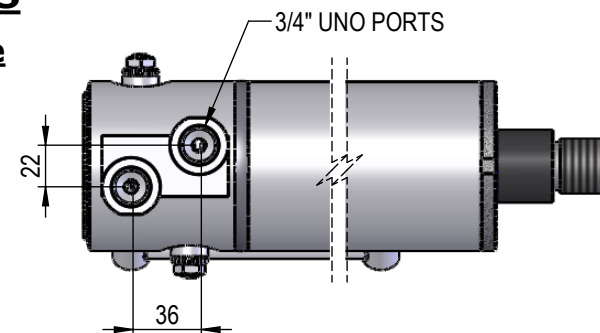
F1



INTERNAL VALVE OPTIONS

Double Counterbalance Valve

Valve cavity Sun T11A
60Lt Pilot operated check valves
Or
60Lt Counterbalance Valves



Single Counterbalance Valve

Valve cavity Sun T11A
60Lt Pilot operated check valve
Or
60Lt Counterbalance Valve
Base side holding

