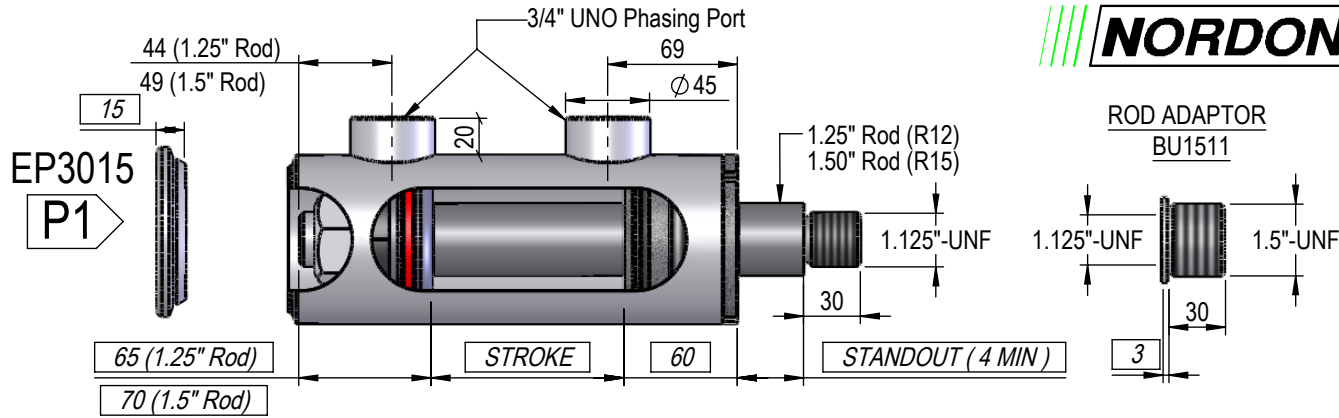


NIP SERIES

3.0" BORE

1.25" OR 1.5" ROD

PHASING CYLINDER



DIMS IN BOXES TO BE USED FOR BUILD LENGTH

PHASING AVAILABLE AT BOTH ENDS, OR AT EITHER BASE OR ROD END ONLY.

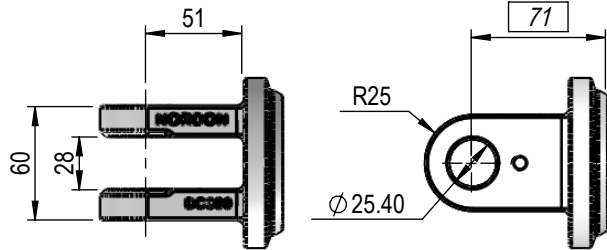
FEMALE CLEVIS

PORT POSITION

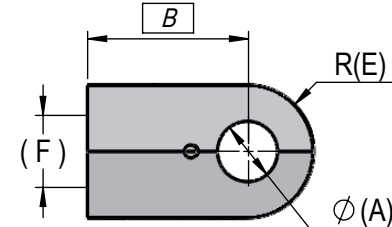
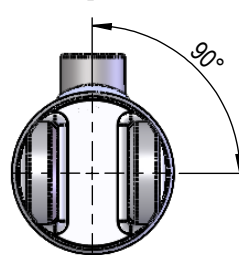
FEMALE CLEVIS

BC300

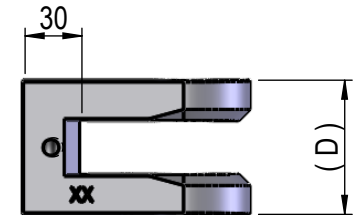
C1



A

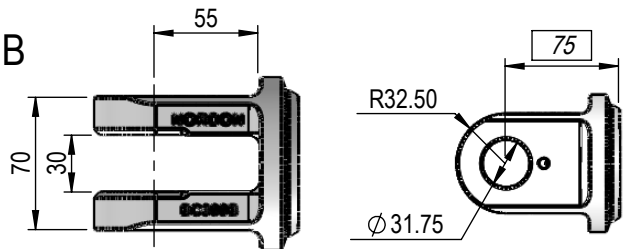


C1-C5

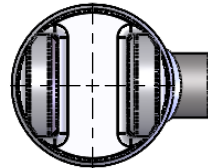


BC300B

C2



B



ROD FEMALE CLEVIS DIMENSIONS

A	B	C	D	E	F	PART NUMBER	CODE
25.4	75	28	64	32	1.125"-UNF	FRC025	C1
25.4	85	28	71	35	*1.5"-UNF	CL002	C3
31.75	85	28	71	35	*1.5"-UNF	CL002B	C4
31.75	85	44	84	40	*1.5"-UNF	FRC40	C5

* USE WITH ROD ADAPTOR BU1511

NOTE: ALL THREADS MACHINED TO 2A/B SPECIFICATION.
ALL PIN HOLES MACHINED TO D9 TOLERANCE.

THIS DRAWING AND THE INFORMATION IT CONTAINS IS THE PROPERTY OF NORDON HYDRAULICS PTY LTD AND MAY NOT BE USED FOR ANY PURPOSE WITHOUT WRITTEN AUTHORISATION FROM THE COMPANY. DRAWINGS SUBJECT TO CHANGE WITHOUT NOTICE. E&OE

STD. CLOSED/OPEN ± 3mm

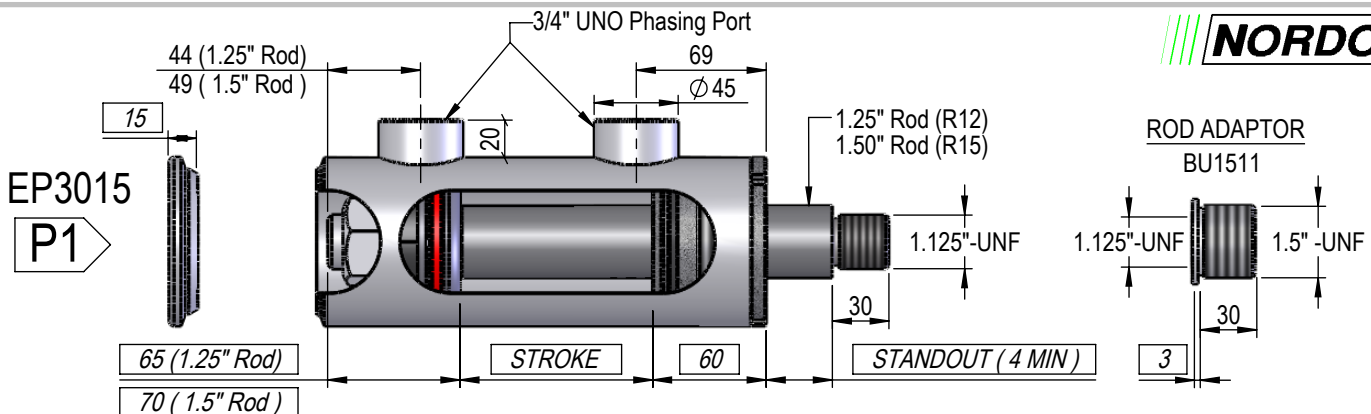
NIP SERIES

3.0" BORE

1.25" OR 1.5" ROD

PHASING CYLINDER

DIMS IN BOXES TO BE USED FOR BUILD LENGTH

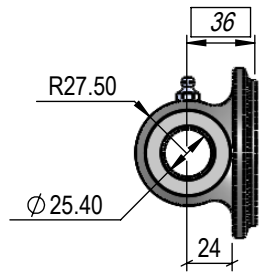
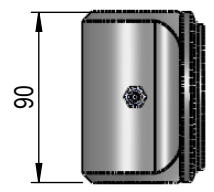


PHASING AVAILABLE AT BOTH ENDS, OR AT EITHER BASE OR ROD END ONLY.

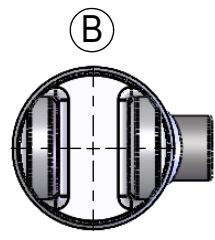
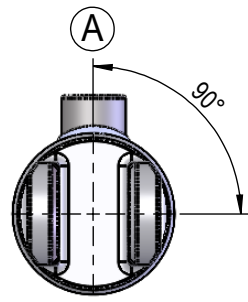
PIN EYE

PBC300-10I90M

E1

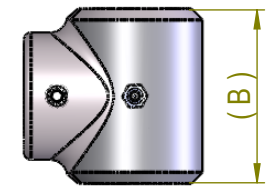
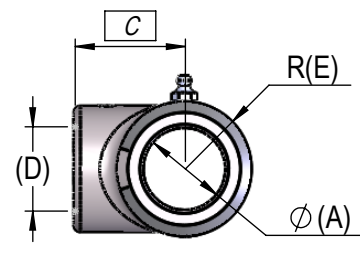


PORT POSITION



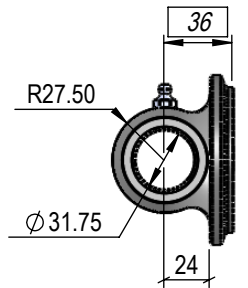
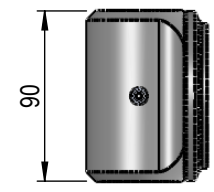
PIN EYE

E1-E8



PBC300-12I90M

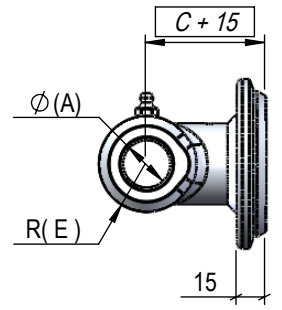
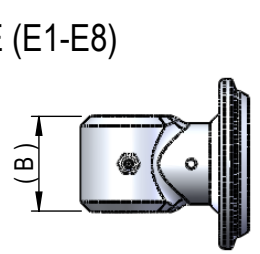
E2



MALE LUG

ROD PIN-EYE (E1-E8) + EP3015

M1-M8



ROD PIN EYE DIMENSIONS

A	B	C	D	E	PART NUMBER	CODE
25.4	50	48	1.125"-UNF	25	EC10I50M11I	E1
25.4	60	48	1.125"-UNF	28.5	EC10I60M11I	E5
25.4	74	51	1.125"-UNF	20	EC10I51M74M	E6
25.4	90	51	1.125"-UNF	20	EC10I51M90M	E7
25.4	128	51	1.125"-UNF	20	EC10I51M128M	E8
31.75	50	48	1.125"-UNF	28.5	EC12I50M11I	E2
31.75	60	48	1.125"-UNF	28.5	EC12I60M11I	E3
38.1	80	51	*1.5"-UNF	31	EC15I80M15I	E4

* USE WITH ROD ADAPTOR BU1511

NOTE: ALL THREADS MACHINED TO 2A/B SPECIFICATION. ALL PIN HOLES MACHINED TO D9 TOLERANCE.

THIS DRAWING AND THE INFORMATION IT CONTAINS IS THE PROPERTY OF NORDON HYDRAULICS PTY LTD AND MAY NOT BE USED FOR ANY PURPOSE WITHOUT WRITTEN AUTHORISATION FROM THE COMPANY. DRAWINGS SUBJECT TO CHANGE WITHOUT NOTICE. E&OE

STD. CLOSED/OPEN ± 3mm

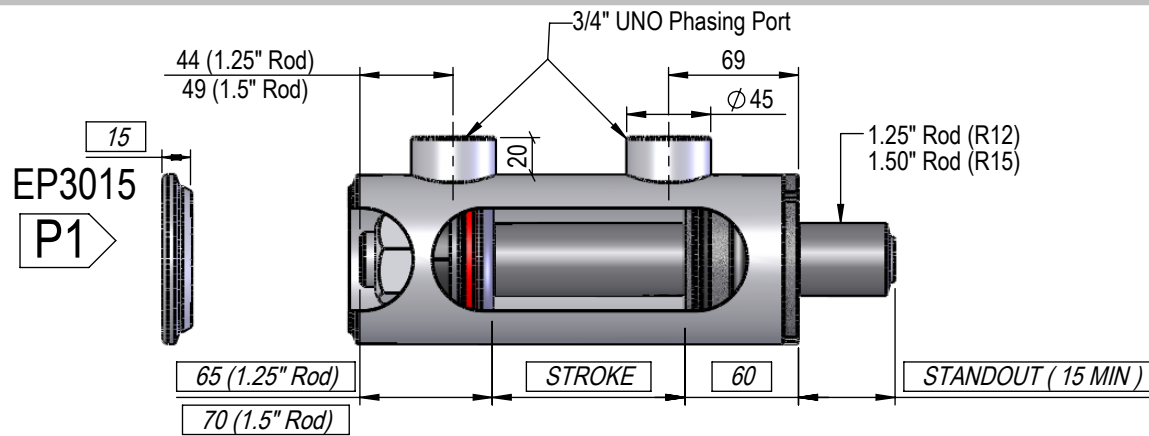
NIP SERIES

3.0" BORE

1.25" OR 1.5" ROD

PHASING CYLINDER

DIMS IN BOXES TO BE USED FOR BUILD LENGTH

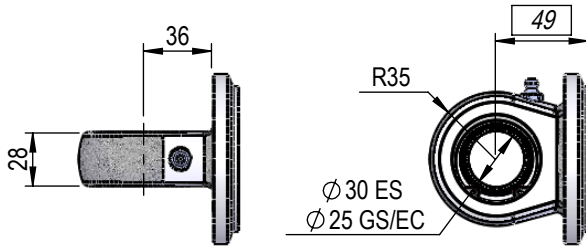


PHASING AVAILABLE AT BOTH ENDS, OR AT EITHER BASE OR ROD END ONLY.

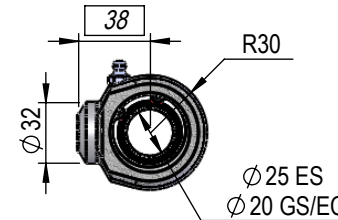
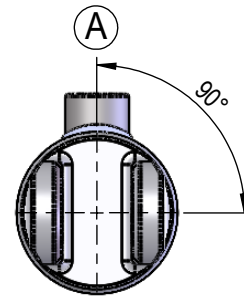
SPHERICAL BEARING

SB-300-30

B1



PORT POSITION



SBR25

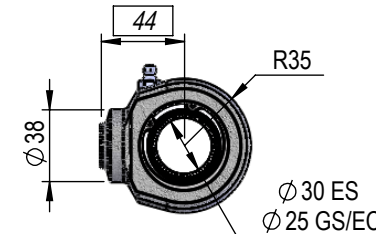
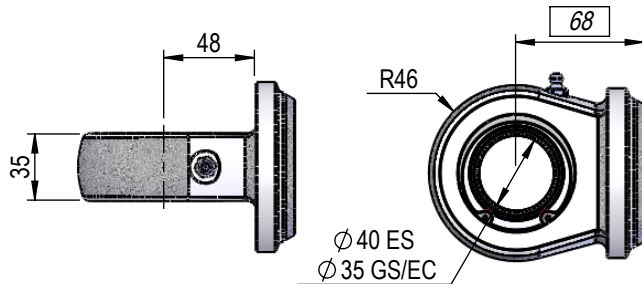
B1



(SUIT 1.25" Rod)

SB-300-40

B2



SBR30

B2

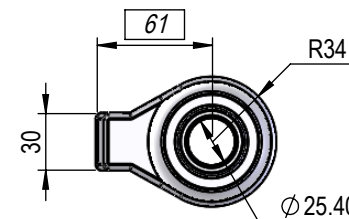
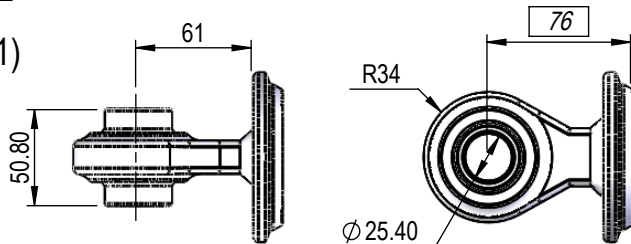


(SUIT 1.5" Rod)

TOP LINK

CAT2 (S311)
+EP3015

L1



TOP LINK

CAT 2 (S311)

L1



NOTE: ALL THREADS MACHINED TO 2A/B SPECIFICATION.
ALL PIN HOLES MACHINED TO D9 TOLERANCE.

THIS DRAWING AND THE INFORMATION IT CONTAINS IS THE PROPERTY OF NORDON HYDRAULICS PTY LTD AND MAY NOT BE USED FOR ANY PURPOSE WITHOUT WRITTEN AUTHORISATION FROM THE COMPANY. DRAWINGS SUBJECT TO CHANGE WITHOUT NOTICE. E&OE

STD. CLOSED/OPEN ± 3mm