

NIP SERIES

3.75" BORE

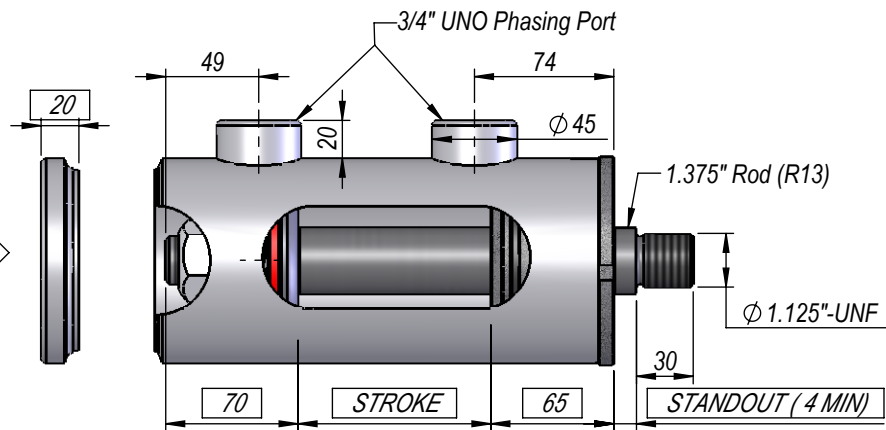
1.375" ROD

PHASING CYLINDER

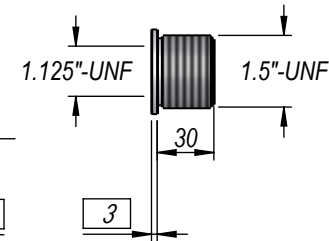
DIMS IN BOXES TO BE
USED FOR BUILD LENGTH

EP37

P1



ROD ADAPTOR
BU1511



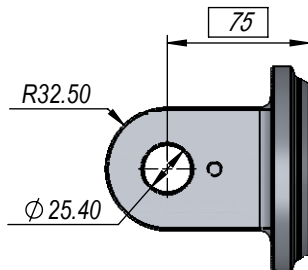
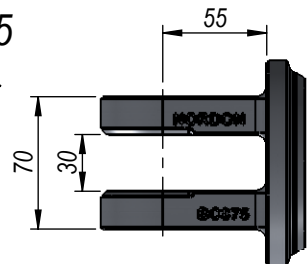
PHASING AVAILABLE AT
BOTH ENDS, OR AT EITHER
BASE OR ROD END ONLY.

FEMALE CLEVIS

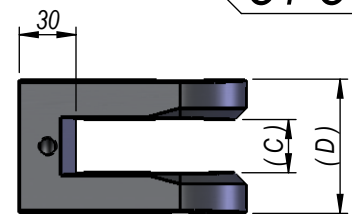
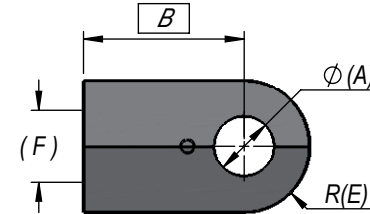
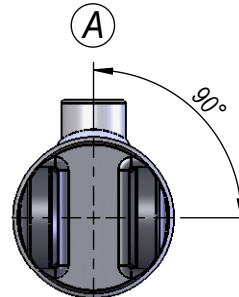
FEMALE CLEVIS

BC375

C1

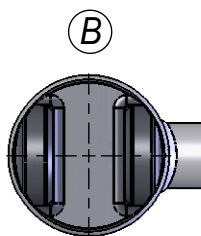
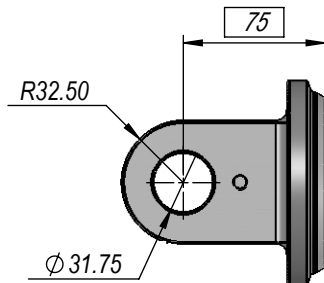
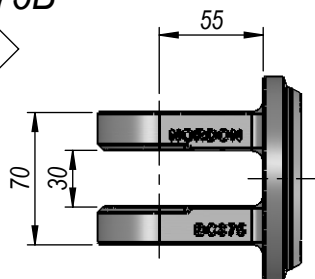


PORT POSITION



BC375B

C2



ROD FEMALE CLEVIS DIMENSIONS

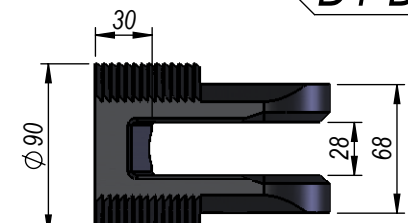
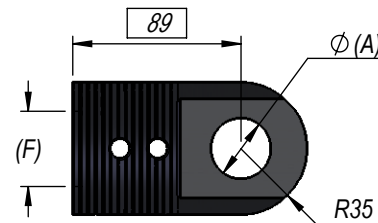
A	B	C	D	E	F	PART NUMBER	CODE
25.4	75	28	64	32	1.125"-UNF	FRC025	C1
25.4	85	28	71	35	*1.5"-UNF	CL002	C2
31.75	85	28	71	35	*1.5"-UNF	CL002B	C3
31.75	85	44	84	40	*1.5"-UNF	FRC40	C4

DEPTH STOP CLEVIS DIMENSIONS

A	B	C	D	E	F	PART NUMBER	CODE
25.4	89	28	68	35	1.125"-UNF	CLR-DS-10I-11I	D1
31.75	89	28	68	35	1.125"-UNF	CLR-DS-12I-11I	D2

* USE WITH ROD ADAPTOR BU1511

D1-D2



NOTE: ALL THREADS MACHINED TO 2A/B SPECIFICATION.
ALL PIN HOLES MACHINED TO D9 TOLERANCE.

THIS DRAWING AND THE INFORMATION IT CONTAINS IS THE PROPERTY OF NORDON HYDRAULICS PTY LTD
AND MAY NOT BE USED FOR ANY PURPOSE WITHOUT WRITTEN AUTHORISATION FROM THE COMPANY.
DRAWINGS SUBJECT TO CHANGE WITHOUT NOTICE. E&OE

STD. OPEN/CLOSED $\pm 3\text{mm}$

NIP SERIES

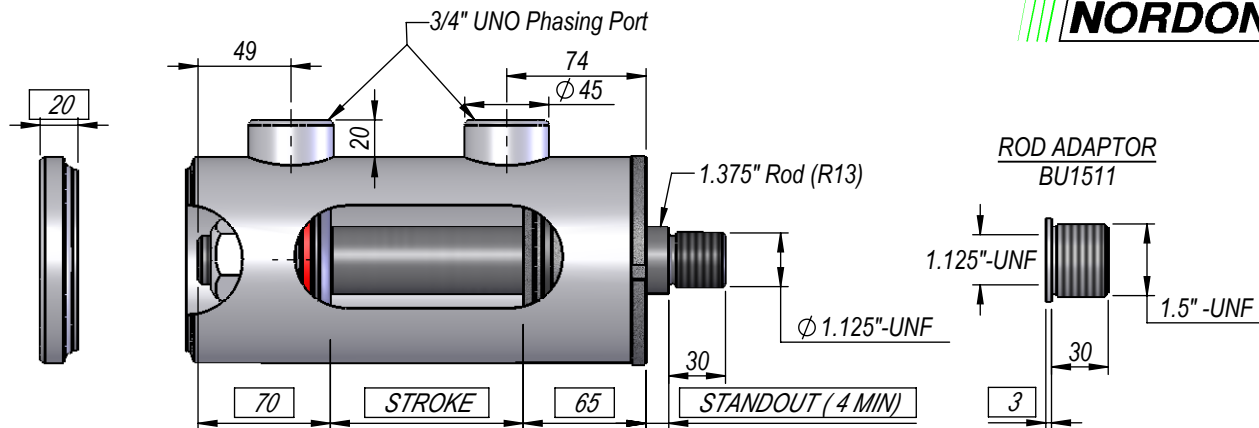
3.75" BORE

1.375" ROD

PHASING CYLINDER

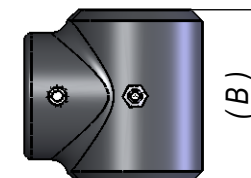
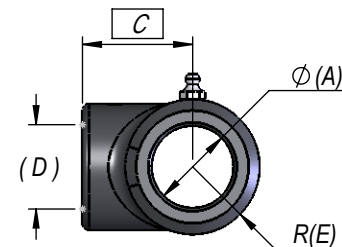
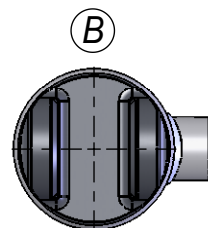
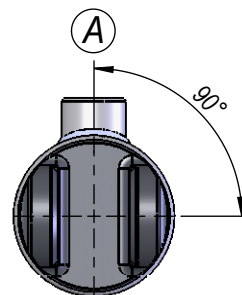
DIMS IN BOXES TO BE
USED FOR BUILD LENGTH

EP37
P1



PHASING AVAILABLE AT
BOTH ENDS, OR AT EITHER
BASE OR ROD END ONLY.

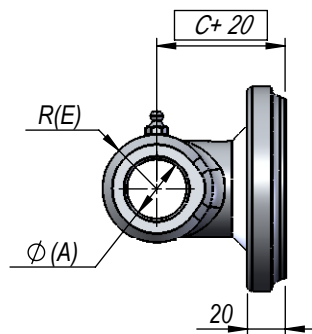
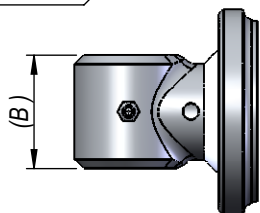
PORT POSITION



MALE LUG

ROD PIN-EYE(E1-E8)
+ EP37

M1-M8



ROD END PIN EYE DIMENSIONS

A	B	C	D	E	PART NUMBER	CODE
25.4	50	48	1.125"-UNF	25	EC10I50M11I	E1
25.4	60	48	1.125"-UNF	28.5	EC10I60M11I	E2
25.4	74	51	1.125"-UNF	20	EC10I51M74M	E3
25.4	90	51	1.125"-UNF	20	EC10I51M90M	E4
25.4	128	51	1.125"-UNF	20	EC10I51M128M	E5
31.75	50	48	1.125"-UNF	28.5	EC12I50M11I	E6
31.75	60	48	1.125"-UNF	28.5	EC12I60M11I	E7
38.1	80	51	*1.5"-UNF	31	EC15I80M15I	E8

* USE WITH ADAPTOR BUSH BU1511

NOTE: ALL THREADS MACHINED TO 2A/B SPECIFICATION.
ALL PIN HOLES MACHINED TO D9 TOLERANCE.

THIS DRAWING AND THE INFORMATION IT CONTAINS IS THE PROPERTY OF NORDON HYDRAULICS PTY LTD
AND MAY NOT BE USED FOR ANY PURPOSE WITHOUT WRITTEN AUTHORISATION FROM THE COMPANY.
DRAWINGS SUBJECT TO CHANGE WITHOUT NOTICE. E&OE

STD. OPEN/CLOSED ±3mm

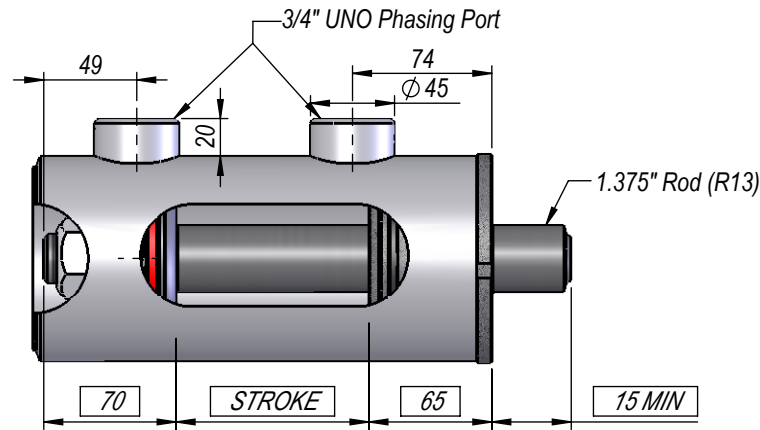
NIP SERIES

3.75" BORE

1.375" ROD

PHASING CYLINDER

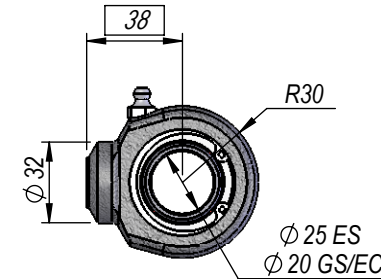
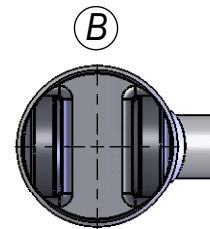
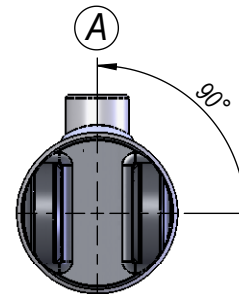
DIMS IN BOXES TO BE
USED FOR BUILD LENGTH



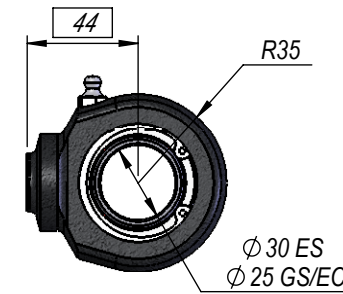
PHASING AVAILABLE AT
BOTH ENDS, OR AT EITHER
BASE OR ROD END ONLY.

SPHERICAL BEARING

PORT POSITION



SBR25
B1



SBR30
B2



NOTE: ALL THREADS MACHINED TO 2A/B SPECIFICATION.
ALL PIN HOLES MACHINED TO D9 TOLERANCE.

THIS DRAWING AND THE INFORMATION IT CONTAINS IS THE PROPERTY OF NORDON HYDRAULICS PTY LTD
AND MAY NOT BE USED FOR ANY PURPOSE WITHOUT WRITTEN AUTHORISATION FROM THE COMPANY.
DRAWINGS SUBJECT TO CHANGE WITHOUT NOTICE. E&OE

STD. OPEN/CLOSED $\pm 3\text{mm}$