

NIP SERIES

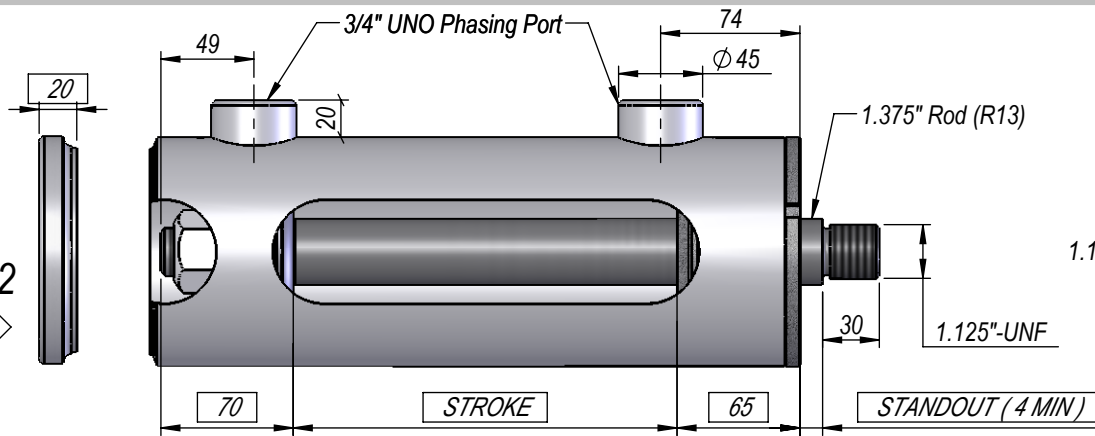
4.25" BORE

1.375" ROD

PHASING CYLINDER

DIMS IN BOXES TO BE USED FOR BUILD LENGTH

EP42
P1

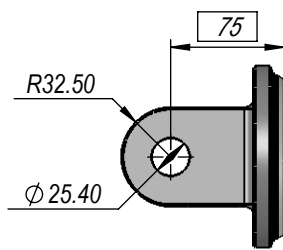
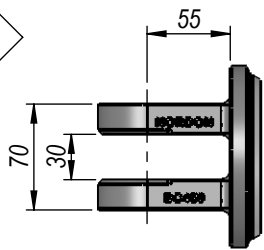


PHASING AVAILABLE AT BOTH ENDS, OR AT EITHER BASE OR ROD END ONLY.

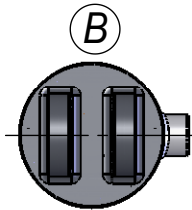
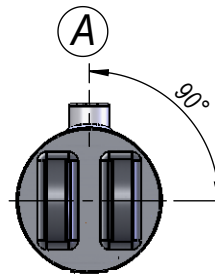
FEMALE CLEVIS

BC425

C1

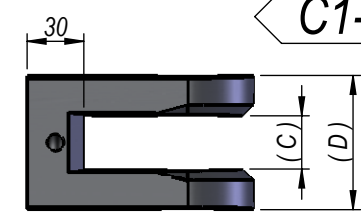
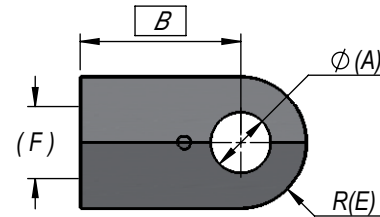


PORT POSITION



FEMALE CLEVIS

C1-C6



ROD END FEMALE CLEVIS DIMENSIONS

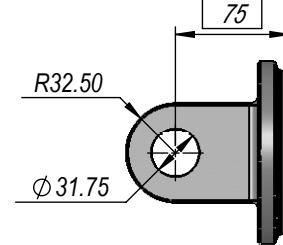
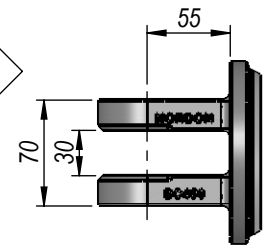
A	B	C	D	E	F	PART NUMBER	CODE
25.4	75	28	64	32	1.125"-UNF	FRC025	C1
25.4	89	28	69	25	1.125"-UNF	CL001	C2
25.4	75	28	59	32	1.125"-UNF	CLR001	C3
25.4	85	28	71	35	1.5"-UNF	CL002	C4
31.75	85	28	71	35	1.5"-UNF	CL002B	C5
31.75	85	44	84	40	1.5"-UNF	FRC40	C6

DEPTH STOP CLEVIS DIMENSIONS

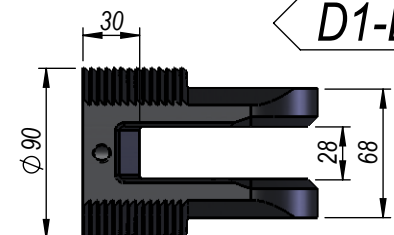
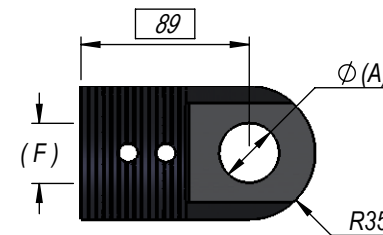
A	B	C	D	E	F	PART NUMBER	CODE
25.4	89	28	68	35	1.125"-UNF	CLR-DS-10I-11I	D1
31.75	89	28	68	35	1.125"-UNF	CLR-DS-12I-11I	D2

BC425B

C2



D1-D2



NOTE: ALL THREADS MACHINED TO 2A/B SPECIFICATION. ALL PIN HOLES MACHINED TO D9 TOLERANCE. STD. CLOSED/OPEN ± 3mm

THIS DRAWING AND THE INFORMATION IT CONTAINS IS THE PROPERTY OF NORDON HYDRAULICS PTY LTD AND MAY NOT BE USED FOR ANY PURPOSE WITHOUT WRITTEN AUTHORISATION FROM THE COMPANY. DRAWINGS SUBJECT TO CHANGE WITHOUT NOTICE. E&OE

NIP SERIES

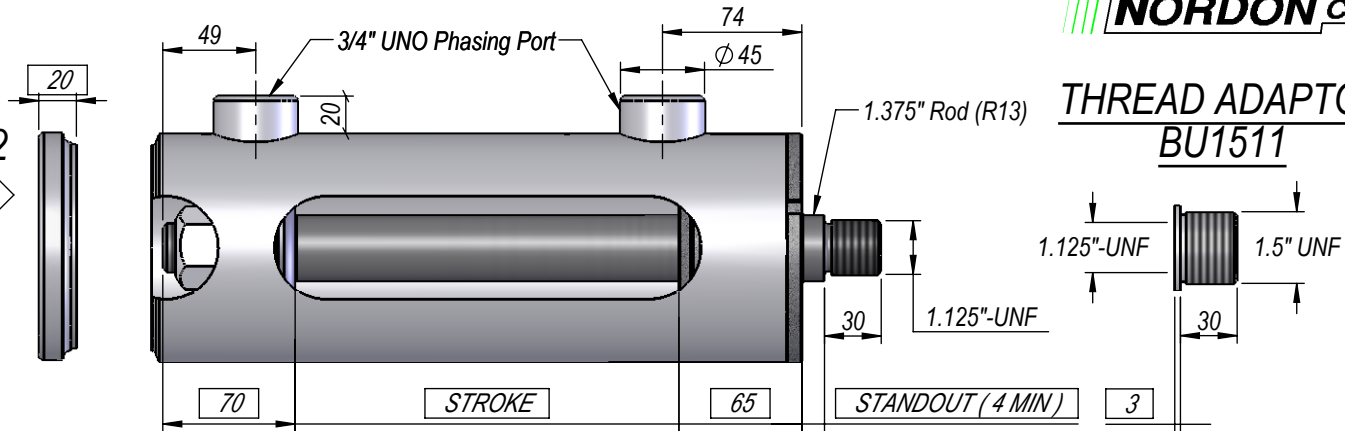
4.25" BORE

1.375" ROD

PHASING CYLINDER

DIMS IN BOXES TO BE USED FOR BUILD LENGTH

EP42
P1



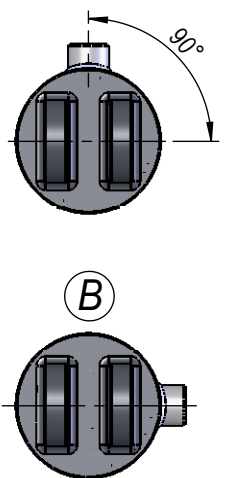
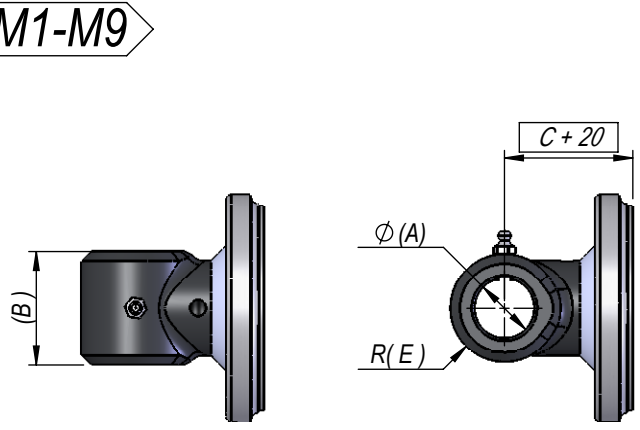
THREAD ADAPTOR
BU1511

PHASING AVAILABLE AT BOTH ENDS, OR AT EITHER BASE OR ROD END ONLY.

MALE LUG

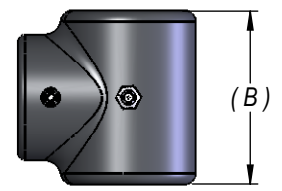
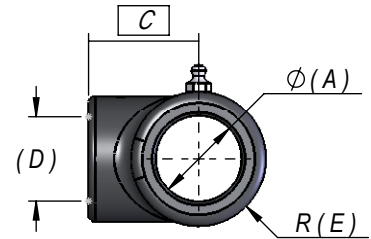
ROD PIN-EYE (E1-E9) + EP42

M1-M9



PIN-EYE

E1-E9



ROD END PIN EYE DIMENSIONS

A	B	C	D	E	PART NUMBER	CODE
25.4	50	48	1.125"-UNF	25	EC10I50M11I	E1
25.4	60	48	1.125"-UNF	28.5	EC10I60M11I	E2
25.4	74	51	1.125"-UNF	20	EC10I51M74M	E3
25.4	90	51	1.125"-UNF	20	EC10I51M90M	E4
25.4	128	51	1.125"-UNF	20	EC10I51M128M	E5
31.75	50	48	1.125"-UNF	28.5	EC12I50M11I	E6
31.75	60	48	1.125"-UNF	28.5	EC12I60M11I	E7
31.75	60	51	*1.5"-UNF	31	EC12I60M15I	E8
38.1	80	51	*1.5"-UNF	31	EC15I80M15I	E9

NOTE: ALL THREADS MACHINED TO 2A/B SPECIFICATION.
ALL PIN HOLES MACHINED TO D9 TOLERANCE.

* USE WITH ADAPTOR BUSH BU1511

THIS DRAWING AND THE INFORMATION IT CONTAINS IS THE PROPERTY OF NORDON HYDRAULICS PTY LTD AND MAY NOT BE USED FOR ANY PURPOSE WITHOUT WRITTEN AUTHORISATION FROM THE COMPANY. DRAWINGS SUBJECT TO CHANGE WITHOUT NOTICE. E&OE

STD. CLOSED/OPEN ± 3mm

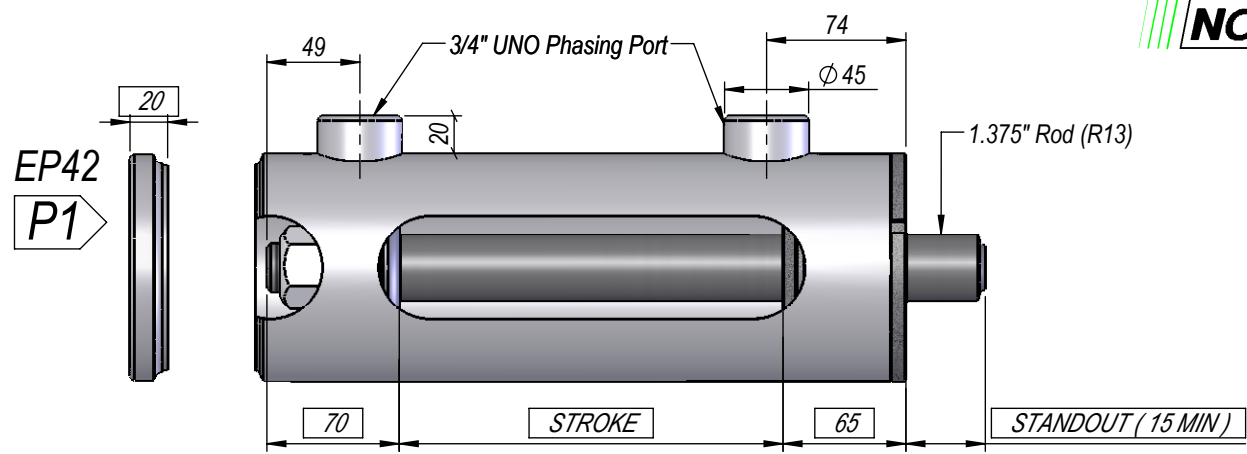
NIP SERIES

4.25" BORE

1.375" ROD

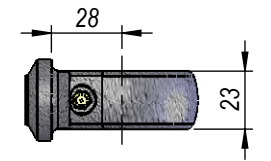
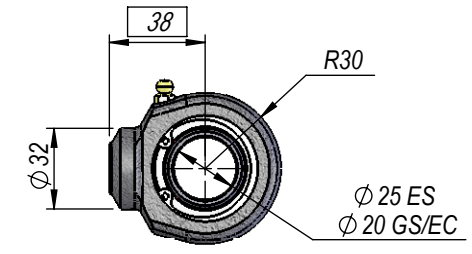
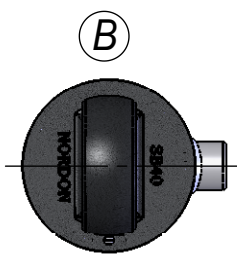
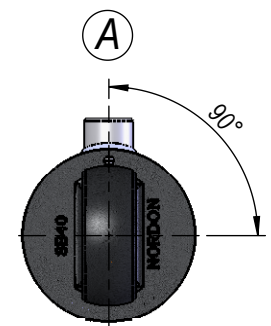
PHASING CYLINDER

DIMS IN BOXES TO BE
USED FOR BUILD LENGTH

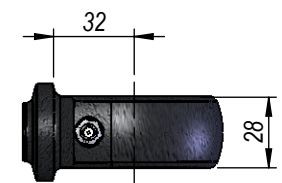
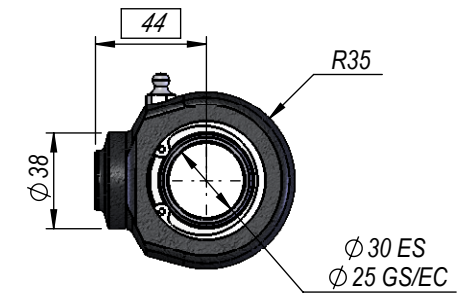


PHASING AVAILABLE
AT BOTH ENDS,
OR AT EITHER BASE
OR ROD END ONLY.

PORT POSITION



SBR25
B1



SBR30
B2

NOTE: ALL THREADS MACHINED TO 2A/B SPECIFICATION.
ALL PIN HOLES MACHINED TO D9 TOLERANCE.

THIS DRAWING AND THE INFORMATION IT CONTAINS IS THE PROPERTY OF NORDON HYDRAULICS PTY LTD AND MAY NOT BE USED FOR ANY PURPOSE WITHOUT WRITTEN AUTHORISATION FROM THE COMPANY. DRAWINGS SUBJECT TO CHANGE WITHOUT NOTICE. E&OE

STD. CLOSED/OPEN $\pm 3mm$