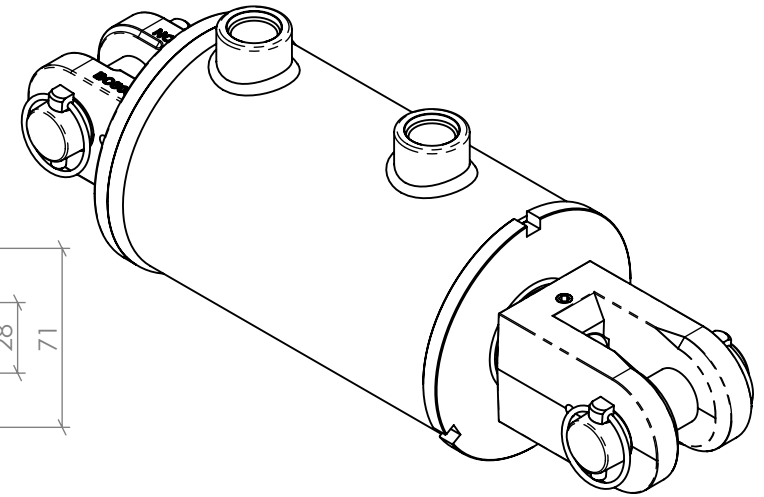
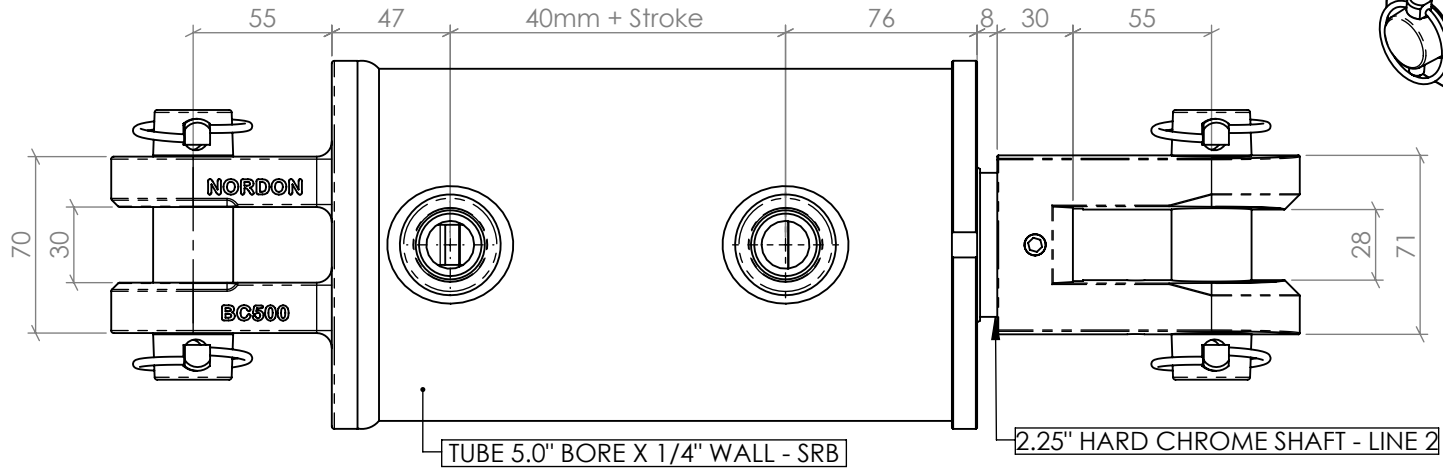


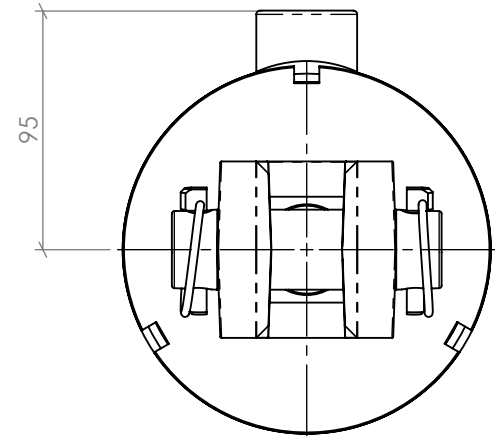
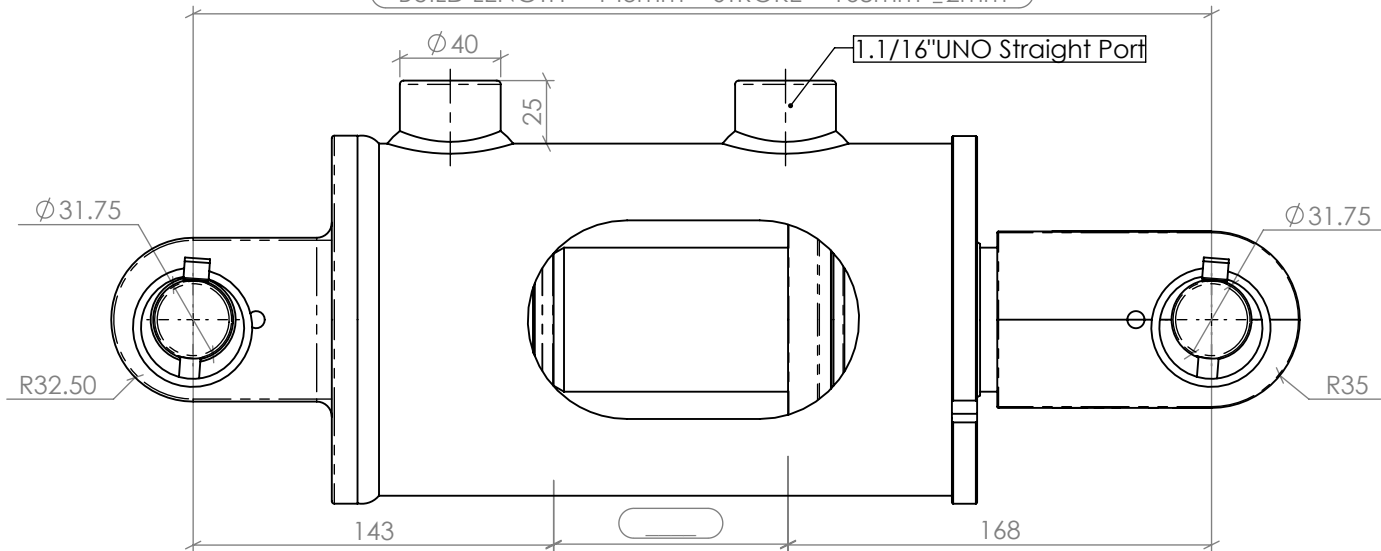
NA SERIES

5" BORE, 2.25" ROD CYLINDER

A PORT POSITION



BUILD LENGTH = 143mm + STROKE + 168mm ±2mm



NOTE: ALL THREADS MACHINED TO 2A/B SPECIFICATION.
ALL PIN HOLES MACHINED TO D9 TOLERANCE.